

Composites Kansas



TALENT DRIVING PROSPERITY

Workforce Innovation in Regional Economic Development

Ten Kansas Counties
Butler, Cowley, Harper, Harvey, Kingman, Marion,
McPherson, Reno, Sedgwick, and Sumner



Strategy 1

EDUCATION AND TRAINING

- Wichita Area Technical College (WATC)
- Workforce Alliance of South Central Kansas and Kansas WorkforceONE
- Wichita State University (WSU), College of Engineering (COE)
- Kansas Career Pipeline/K-12

Strategy 2

RESEARCH & DEVELOPMENT AND ENTREPRENEURSHIP

- Via Christi Health Systems, Orthopedic Research Center
- WSU, Center for Entrepreneurship
- WSU, Kansas Small Business Development Center (KSBDC)
- WSU, National Institute for Aviation Research (NIAR)

Strategy 3

REGIONAL ECONOMIC GROWTH

- Business and Industry
- Greater Wichita Economic Development Coalition (GWEDC)
- Economic Development Agencies in the Region

Education and Training

- Nearly 2,900 individuals received training in advanced materials processes with WIRED funding
 - 117 at WATC (328 total)
 - 1,280 through WA and KSWFOne
 - 211 high school youth in career exploration camps
 - 264 K-12 educators related to PLTW
 - 214 composites short courses (64 enterprises)
 - 63 FastTrac[®]
 - 180 Practical Entrepreneur Training

Curricula

More than 50 curricula were developed and 300 educators prepared for instructing these courses

- Associates Degree in Applied Science
 - Aviation Manufacturing
 - Industrial Systems
- Technical Certificate
 - Composites Technology
 - Composites Fabrication
 - Composites Repair
 - Industrial Systems
- ESL Composites Course
- Online Composites Familiarization
- Customized Training
- Career Exploration
- Project Lead The Way
- Short Course
 - Non-engineers
 - Advanced engineers
- Entrepreneurship Training

Laboratory Facilities

Composites Laboratory

- Autoclave
- Nitrogen Generator
- Downdraft Bench
- NDT Systems Multi-Mode Ultra Bond Tester
- Composites Repair System
- Heatcon Cold Cabinet
- (5) Snap-on e-Lock, Roll, Tool Boxes
- (2) Gerber Technology Gerbercutter System

Non-Destructive Training Lab

- Sonic 1200M Ultrasonic A-Scan units (8)
- Nortec 500D Eddy Current Units (8)
- Omniscan phased array units (3)
- Lorad 160 KVP X-Ray unit
- Magnaflux ADH 2045 Magnetic Particle
- Parker DA-400 portable Magnetic Particle (3)

Workforce Pipeline

- Career exploration education and training in STEM topics have impacted and empowered more than 200 youth, many of whom are from underrepresented groups.
- Kansas Career Pipeline, online video vignettes
- Nearly 250 technical professionals, who were trained in the pre-composite materials era, participated in short course.

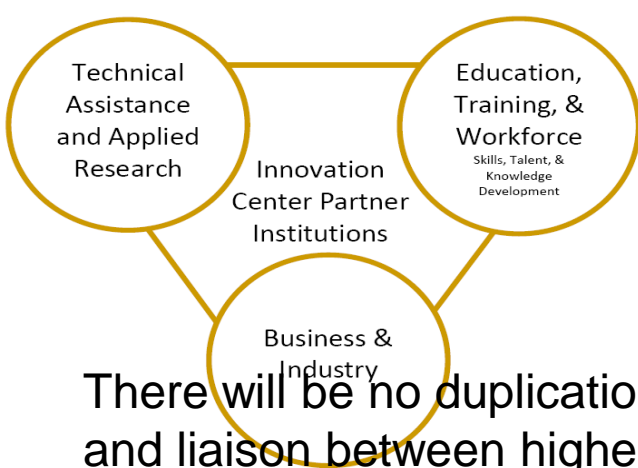
Economic Diversification

- Medical Device Industry
 - Center of Innovation for Biomaterials in Orthopaedic Research (CiBOR)
 - Leverages the experience in advanced composites to grow a new cluster.
- Renewable Energy Industry
 - Kansas Wind Supply Chain
 - Siemens
 - Advanced Manufacturing Institute
 - Tindal

Sustainability

- Philosophical Sustainability
- Relational Sustainability
- Institutional Sustainability
- Programmatic Sustainability

- Regional Strategic Planning
 - New manner of convening regional economic development partners
 - Center to continue to foster WIRED goals



Center Value Proposition

There will be no duplication of services; instead the Center will act as a convener and liaison between higher education, business and industry, workforce, economic development and local, state and national governmental programs.

The Center will:

- Build partnerships for identifying and sharing best practices
- Foster cluster networks
- Assist our regional and state enterprises to advance in the knowledge economy
- Convene previously separate or independent programs.
- Apply higher education talent and expertise to the community's key issues
- Engage the higher education more fully in the future of the region and economic development
- Harness higher education resources for generating human capital, stimulating innovation, strengthening industry clusters and promoting sustainability
- Integrate education, economic and workforce development activities and demonstrate that talent development can drive economic transformation in the regional economy

21st Century Cleaning Service, 21st Century Fence and Landscaping, A Box 4 U (5), A Matter of Time Concierge Service, LTD, AAA Hardwood Floors (10), Absolute Dimensions (5), Advanced Manufacturing Institute (125), Advocate Care Services, Inc. (2), Aero Tech Aviation Design (ATAD) (2), Aerospace Systems & Components Inc. (9), Air Plains Services Inc., Airbus North America Engineering Inc. (36), Alternative Gifts international (2), Ametek (4), Andover High School (3), Andover Veterinary Clinic, Apeature Productions, B & S Aircraft, Baxter's Café, Benecor, Inc. (4), Berry Companies Inc. (6), Black Hills Energy, Boeing IDS, Boeing Supplier Quality (2), Bombardier Learjet (981), Bradtel LLC, Buffco Engineering (5), Butler Community College (36), Butler County Economic Development, Calmar (189), Campus High School (3), Carla's Youth Residential Center (4), Central Plains Eye MDs, Cessna Aircraft Company (53), Charm/Manners School, ChiART, Choose 2 Be Wealthy Youth Financial Education, CiBOR (13), Citizen State Bank in Newton, City of Derby, City of Wichita, City of Winfield (2), Clearwater Engineering (4), Cloud Community College (2), Cohlma Marketing, Colby Community College (7), Colvin Loans, Commerce Bank, Commercial Laundry Sales (3), Convergys Manufacturing, Cowley College (3), Cowley County Economic Development Partnership, Cowley First, D&S Manufacturing Inc., DaVinci Systems, LLC, Dell Services Inc. (2), Derby High School (3), Design Manufacturers (3), D-J Engineering (3), Dodge City Community College (3), Dog n Shake (4), Dondlinger Const., eServ (4), Exacta Aerospace (2), FAA - Wichita Aircraft Certification Office (7), FastTrac Graduates, Fiber Dynamics (8), Foley, Frida's Mexican Grill, G6 (3), Gail Fisher & Associates (6), Galaxy Tool Corporation (7), Ginger Style/ Retail, GKN, Aerospace Precision Machining, Inc. (67), Global Engineering & Technology (2), Global Pocket Media, Global Trends, Go Wichita, GWEDC, Hampel Oil (3), Harlow Aerostructures LLC (2), Harper Trucks, Hartleys Iron (3), Harvey County Economic Development Council (2), Hawker Beechcraft Corporation (3), Heartstone Inc., Hentzen Contractors, Hiller, Inc. (6), Hillsboro Development Corporation, Hillside Nursery, Hog Wild (2), Hutchinson Community College (8), Independence Community College (2), INTRUST, Jill Olson Photography (2), Jimmy Johns, JMT Industries, Inc. (6) Johns Manville (9), Johnson County Community College (2), Jones & Co., Kaman Aerostructures (Plastic Fab Co, Inc.) (201), Kansas Department of Commerce, KCEDC, K-Doll Coatings (5) Kent Audio Visual, Kiser Manufacturing (5), Knipp's, Koch Industries, Inc., La Chinita Mexican Restaurants Inc., Lawn Sprinkler Services, Lawrence Photo, Inc., Leading Edge Aerospace (3), Leading Technology Composites (110), Logix Insulated Concrete Form (Form Systems) (5), Logo Depot Industry Uniform, Ludeman Insulation & Supply, Inc., Maier Enterprises, Marion County, McGreevy's Mid-West Meat Co., Medical Pain Management, Mental Health Association, Metal Finishing Co., Mid-American Credit Union, Millennium Concepts, Inc., Milling Precision Tools (7), Mize & Co., Inc., Monical Flooring Inc., National Institute for Aviation Research (8), NFA, North American Aviation (9), Nye & Associates Inc. (2), Oliver Construction, One Stop Flooring, OSCI Inc., Paint, The Town, Papa Design, Park Aircraft Technologies Corp (60), Pastry Shop, Petersen Products, Phil Ray Photos, Polymer Group, Inc. (PGI), Postal Service, Pratt Community College (6), Precision Pattern (90), Prestige Graphics, Professional Image Center, PRO-Unlimited, Purse Consignment, Quince by Melissa, REAP (3), ReMax (2), Richard Crowder DDS (2), Rubbermaid (85), SBA, Sedgwick County (2), Sedgwick County Community Development, Sedgwick County Economic Development, Seeders Inc., Senior Aerospace Composites (7), ShredKS (2), Sky Vending, Slug Bug & Rug, Sonya's Good Ole' Cookies, South East High School (3), Spirit AeroSystems Inc. (24), Stix & Stones Tree Service & Landscaping, Sunlight Children's Advocacy and Rights Foundation, Superior Tool Service Inc. (5), Surgical Specialists, PA (2), TCV Publishing, Techmer PM, TECT Aerospace, The Bill Guy Technology Solutions, Inc., The Handwriting Guy, The Leaf Tea Lounge, The Onion Tree, TK Investments, LLC, Total Installation (2), Transtecs Corporation (3), Triston's Photography, Triumph Aerospace Systems, True North, USAF, USD 259, Wichita (29), USD 260, Derby (6), USD 308, Hutchinson (3), USD 373, Newton (3), USD 465, Winfield (4), USD 470, Arkansas City (3), Via Christi Research, Vision Communications (3), Visionary Micro Lenders, Weaver Manufacturing, Wescon Products (5), White Star Machinery (2), Wichita Area Technical College (16), Wichita Metro Chamber of Commerce, Wichita State University (20), Wichita West High School, Workforce Alliance of South Central Kansas (3), Workforce Solutions

Composites Kansas



TALENT DRIVING PROSPERITY

Workforce Innovation in Regional Economic Development

Ten Kansas Counties
Butler, Cowley, Harper, Harvey, Kingman, Marion,
McPherson, Reno, Sedgwick, and Sumner



Strategy 1

EDUCATION AND TRAINING

- Wichita Area Technical College (WATC)
- Workforce Alliance of South Central Kansas and Kansas WorkforceONE
- Wichita State University (WSU), College of Engineering (COE)
- Kansas Career Pipeline/K-12

Strategy 2

RESEARCH & DEVELOPMENT AND ENTREPRENEURSHIP

- Via Christi Health Systems, Orthopedic Research Center
- WSU, Center for Entrepreneurship
- WSU, Kansas Small Business Development Center (KSBDC)
- WSU, National Institute for Aviation Research (NIAR)

Strategy 3

REGIONAL ECONOMIC GROWTH

- Business and Industry
- Greater Wichita Economic Development Coalition (GWEDC)
- Economic Development Agencies in the Region