



**Economic Development Committee  
Meeting Agenda  
Noon, November 17, 2011**  
Workforce Alliance Administrative Offices  
Commissioner Dave Unruh, Chairman

**1. Welcome, Introductions, and Announcements:** *Commissioner Dave Unruh*

**2. Minutes from the September 22, 2011 REAP EDC Meeting:** *Commissioner Dave Unruh*  
**Recommended Action:** *Approve or modify minutes as needed.*

**3. Local Area IV Chief Elected Officials Business:** *Commissioner Dave Unruh*

*All members of the Economic Development Committee are encouraged to provide discussion on any of the following items, however, only elected officials serving as the CEOB may take official action.*

A. Workforce Center Operations and Performance Update

**Recommended Action:** *Receive and file.*

B. Discussion on Role of CEOB

**Recommended Action:** *Discuss and take appropriate action.*

**4. Review and Discussion of 2011 Work Plan:** *Commissioner Dave Unruh*

*A review the 2011 Work Plan will be provided and the Committee is asked to discuss activities that should be focused on in 2012.*

**Recommended Action:** *Forward proposed Committee activities for 2012 to the Executive Committee for consideration.*

**5. 2012 EDC Meeting Schedule:** *Mr. Joe Yager*

*Staff has prepared dates, times, and location for Committee meetings in 2012.*

**Recommended Action:** *Approve meeting schedule.*

**6. Alternative Energy Task Force Discussion:** *Commissioner Dave Unruh*

*The Committee will be asked to discuss the creation of a task force on the emerging wind energy manufacturing and production within the region and State.*

**Recommended Action:** *Discuss and identify next steps.*

**7. Unscheduled Topics:** *Committee Members*

*Committee members are encouraged to provide updates or request discussion on issues that may be relevant to REAP.*

**8. Adjourn**

---

*The next REAP EDC meeting will be at Noon on December 22, 2011.*

**Economic Development Committee  
Meeting Minutes – September 22, 2011**  
Workforce Alliance Administrative Offices  
Commissioner Dave Unruh, Chairman

---

**1. Welcome, Introductions, and Announcements.**

Commissioner Dave Unruh, Sedgwick County, opened the meeting; members, staff, and guests introduced themselves.

**2. Review of Minutes from the August 25, 2011 REAP Economic Development Committee Meeting**

Mayor Keith DeHaven, City of Sedgwick, moved (Mr. Tom Winters, Kingman County) to approve the minutes. The motion passed unanimously.

**3. Local Area IV Chief Elected Officials Business**

**A. Re-Appointments to Workforce Alliance Board of Directors**

The following individuals' terms expired on June 30, 2011. All represent business and have been nominated for re-appointment to the Workforce Alliance Board of Directors. These terms will be considered to begin on July 1, 2011 and set to expire June 30, 2014.

- Mr. Steve Flesher, Co-Owner, InterAct Training Group
- Mr. Greg Tyler, Plant Manager, Draka
- Ms. Kathy Smith, Human Resource Manager, Kaman Composites- Wichita Inc.

Commissioner Unruh moved (Mayor DeHaven) to approve the nominations as presented. The motion passed unanimously.

**B. Workforce Center Operations and Performance Update**

Mr. Keith Lawing, Workforce Alliance, provided a packet of information for members to review. He noted that the WA Executive Committee has approved assigning Board members and charter task forces to review current human resources procedures and the facility needs of the Workforce Alliance. Both of these areas should be reviewed based on the increased number of full time employees of the Workforce Alliance, the evolving employment and training needs of employers and job seekers in the region, and the current and projected funding allocations from the Workforce Investment Act. He stated that evaluating the current footprint will help determine ways to provide better access to services.

Commissioner Unruh moved, (Mayor DeHaven) to receive and file the WA Operations and Performance Update. The motion passed unanimously.

**4. Wind Energy Cluster Discussion**

The Committee was asked to discuss the emerging wind energy manufacturing and production within the region and State. Commissioner Unruh asked how to increase efficiency of the manufacturing and production. He noted that Mr. Troy Carlson, Initiatives Inc., conducted an analysis of opportunities with GWEDC, Newton, Wichita, Harvey County, and Sedgwick County. Commissioner Unruh asked the Committee to discuss how our region could cooperate on this issue.

Mr. Joe Yager, Chief Executive Officer of REAP, noted that Mr. Carlson had provided a fast facts page as well as the Governors' article on wind potential provided within the agenda packet.

Ms. Deborah Teufel, GWEDC, spoke on the emergence of the wind energy sector and noted that incentives for this sector went flat a few years ago. She added that with the recent announcements that is changing the dynamic and there is a need to work together to do what we can to be successful.

Several members of the Committee commented on recent proposals and projects, including the Governor's initiative. It was also noted that this was an important issue at the REAP Listening Tour in Hutchinson.

The Committee discussed several related issues, noting that for economic development there will need to be a clear vision and dedication to this cluster to make it a reality. They also noted that there needs to be more awareness on related issues, such as affordable housing, land use, and availability.

The Committee came to consensus and directed staff to evaluate the creation of a taskforce that is dedicated to alternative energy. Commissioner Unruh noted that this should be a priority and will be brought back to the Committee for additional discussion at a later date.

### **5. Lessons from Pittsburgh Report**

Commissioner Unruh gave a report on the 2011 Visioneering Wichita City-to-City trip to Pittsburgh, PA on September 14-16. Overall the trip was an incredible learning experience and productive solutions were shared on how to further positive growth within our region.

### **6. 2011 Legislative Committee Regional Listening Tour Update**

Mr. Yager discussed the Listening Tours, which encourage discussion about individual communities and get them more engaged. One goal behind this tour is that if there is something that exists in one county and does not harm any other member communities then REAP would want to learn about it and be supportive of that issue. The next stop on the tour is El Dorado on September 23<sup>rd</sup> at 8am. The stop in Wellington will be by the end of October, and Sedgwick County will be in November.

### **7. Sustainable Communities Planning Grant Update**

Mr. Yager outlined the progress that had been made leading up to the October submission of the HUD Sustainable Communities Grant. REAP is the lead applicant, and the grant aligns with the mission of REAP by allowing our region to integrate housing, economic and workforce development, transportation, and infrastructure investments into a regional planning initiative that considers economic competitiveness, social equity, energy use, and public health.

### **8. Adjourn**

Having no other business the meeting was adjourned.

<b>REAP Economic Development Committee</b>	
<b>Attendance – 9/22/2011</b>	
<b>Name</b>	<b>Jurisdiction</b>
*Commissioner Dave Unruh, Chair	Sedgwick County
*Mayor Keith DeHaven	City of Sedgwick
Mr. Tom Winters	Kingman County
Mr. David Alfaro	Butler County
Commissioner Chip Westfall	Harvey County
<b>Guests and Staff</b>	
Mr. Bill Bolin	SCKEDD
Ms. Irene Hart	Sedgwick County
Mr. Marv Duncan	Sedgwick County
Mr. Harland Priddle	K-96 Corridor Association
Mr. Keith Lawing	Workforce Alliance
Ms. Kim Cronister	Workforce Alliance
Ms. Deborah Teufel	GWEDC
Mr. Joe Yager	WSU
Mr. Taylour Tedder	WSU

\* *CEOB Members*

**Item**

Local Area IV Chief Elected Officials Business

**Background**

Through an agreement entered into by counties in Local Area IV as defined by the State of Kansas, the Economic Development Committee (EDC) has been designated to serve as the Chief Elected Officials Board (CEOB), as defined in the Workforce Investment Act of 1998 in Local Area IV, which includes Butler, Cowley, Kingman, Harper, Sedgwick and Sumner counties. All EDC members are asked to participate, however, only those designated elected officials of the CEOB shall have a vote.

**Workforce Center Operations, Performance, and Financial Update**  
**Workshops at the Wichita Workforce Center**

**October 2011 Workshops**

<b>Title of Workshop</b>	<b># of times offered</b>	<b>Total # signed up</b>	<b>Total # attended</b>
Advanced Resume	4	34	16
Interview Success	5	32	19
Out of the Box! Structured Job & Networking	2	12	7
Online Job Search	4	42	26
Creating a Resume	4	54	23
Overcoming Barriers to Employment	2	9	7
Introduction to Computers	5	54	24
Introduction to Microsoft Word	5	87	52
Intermediate Microsoft Word	4	62	36
Advanced Microsoft Word	4	54	25
Introduction to Microsoft Excel	4	45	33
Intermediate Microsoft Excel	4	42	58
Microsoft PowerPoint	2	23	17
<b>Total</b>	<b>49</b>	<b>550</b>	<b>343</b>

In addition to the above listed workshops, the Workforce Alliance offers the Basic Employability Skills Training (BEST) curriculum. This one day workshop is broken down into eight modules that can be completed individually or as a whole by a job seeker. In October 2011, each module was offered twice, 102 signed up and 41 attended the BEST modules.

**Traffic Report**

The Workforce Alliance of South Central Kansas served 8,239 customers during the month of September 2011, down from 8,374 served in October 2011. On average, the four centers serve approximately 6,966 customers per month. There were 135 fewer customers served in October 2011 than October 2010.

## **WIA Performance Update**

*WIA Performance:* The WIA program is meeting the annual sanction level in all measures for all programs for the first time since 2009. Average Earnings for both Adult and DW are high, and the Youth program is leading the state in Placement, Employment/Education, and Attainment Degree/Certificate.

*Wagner-Peyser Performance:* The Wagner-Peyser program continues to exceed average earnings and meet sanction in Entered Employment and Retention.

*Senior Performance:* The Senior Program performance could not be updated because the SPARQ database is currently down, numbers for the quarter should be available in December.

## **Financial Update**

*Federal Allocations:* The United States Department of Labor (DOL) released the federal allocations to the states for FY12 which is the allocation normally received in September for obligation in October. The FY12 allocation is for 21 months ending June 30, 2013. The delay in funding arose out of questions about how much funding the state would be able to hold at the state level for set aside. DOL notified the states on October 27, 2011 that for both PY11 and FY12 allocations the states can only hold 5% for administrative functions; states can normally withhold 15%. States will still be allowed to keep 25% of the Dislocated Worker allocation for Statewide Rapid Response Activities. The state notified WA on November 8th of its revised allocation for FY12, which had an additional \$150,015 in Dislocated Worker funding and \$73,506 in Adult funding. These additional funds will be applied to the client training and supportive services line items in the PY11 Budget.

*Budget and Financials:* The finances are as expected and the budget is on track.

## **Information Technology (IT) Employer Roundtable**

The IT Employer Roundtable was hosted at the Wichita Workforce Center on November 3, 2011. Employers in attendance included ITKansas, Choose Networks, and High Touch. A representative from Butler Community College also joined the meeting.

The purpose of this meeting was to initiate discussions regarding the need to obtain industry information to improve understanding of career needs related to IT, and how training and education could be tailored to address these needs. Some ideas from this meeting include:

- Creating an overlap of education and work experience
- Explore On the Job Training (OJT) and work experience strategies
- Raise community awareness of IT businesses
- Clarify expectations in the IT job market (time commitment, pay scale, experience, etc.)
- Skills needed for small business IT jobs
  - An openness to frequently learn new skills
  - Customer service
  - Real world experience

The Business Services Team is currently conducting one-on-one follow-up meetings with these employers.

## **Grant Updates**

*PACES:* The work plan for year four is in development. Two recent examples of policy advocacy and awareness strategies are; Keith Lawing's appointment to the U.S. Conference of Mayors (see below), and the upcoming 2012 Career Pathways Institute. More attention has been put on employer partnerships as the Business Team has been assigned to an industry sector focus. CNC Training Class update: 15 participants completed the class; 10 are currently employed, one is continuing education, and four are actively working with the Business Team on job placement activities.

### **MEMORANDUM**

**TO:** WA Board of Directors  
**FROM:** Keith Lawing  
**DATE:** November 8, 2011  
**RE:** U.S. Conference of Mayors WDC Membership

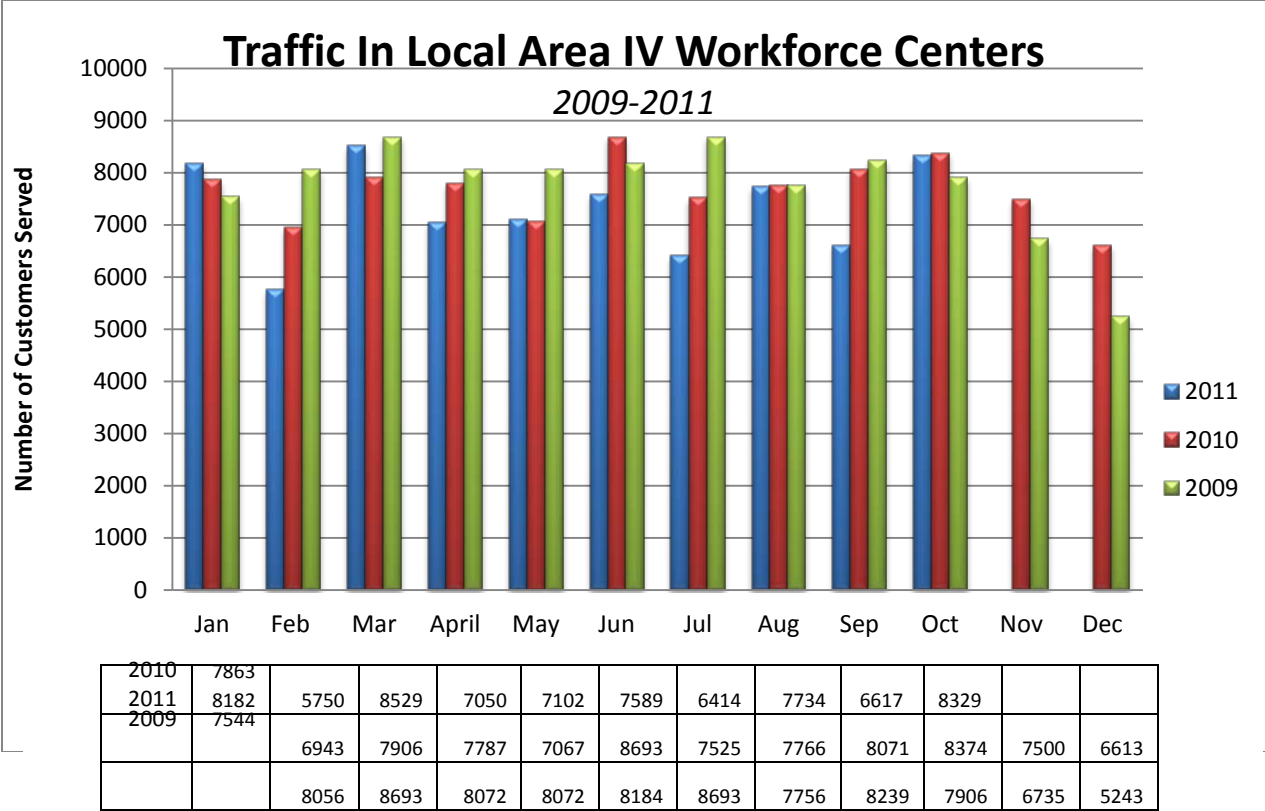
It is my pleasure to announce that through the office of Mayor Carl Brewer I have been invited to serve on the U.S. Conference of Mayors Workforce Development Council (WDC). As a member of the WDC, I will represent the Wichita region and have an active role in representing workforce and job training issues, and be in a position to discuss these items with mayors, congressional leaders, and members of the current Administration. The WDC provides a direct line to Washington D.C. and assists in defining how the workforce system fits into workforce development initiatives of the Administration and the 112th Congress. It is my hope that involvement in the WDC will greatly improve policy advocacy for the PACES initiative as well.

I appreciate Mayor Brewer's support and know that my involvement with the WDC will give the Wichita region a stronger voice among officials with a direct role in impacting policies for workforce development.

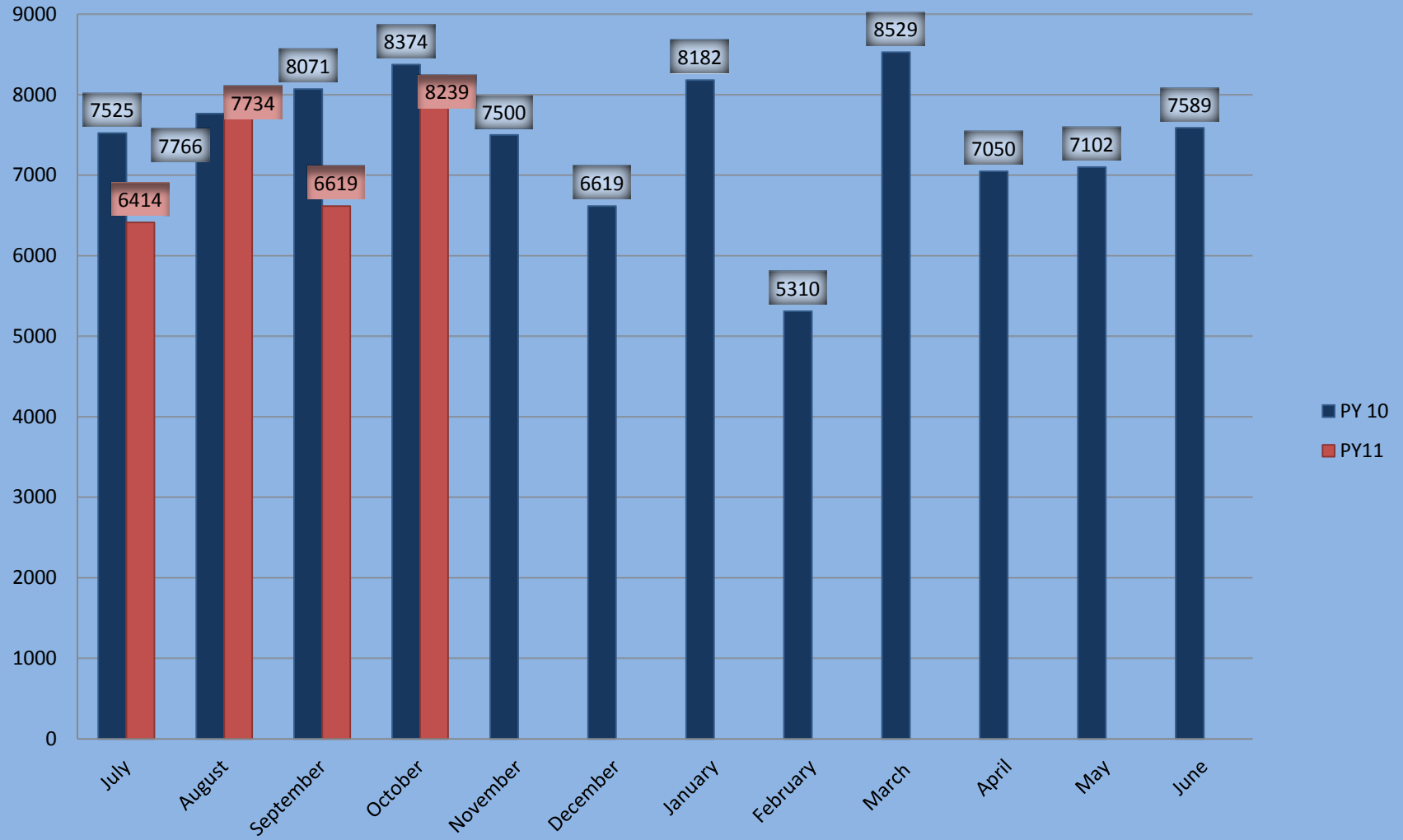
*NEG:* As of November 14, 2011, 1,046 participants have been served through the NEG, and 515 participants have been enrolled in training; 338 clients have exited the program and 62 percent were employed at exit. The NEG grant was originally scheduled to expire on January 31, 2012, but the Department of Labor granted a no cost modification to extend the grant through September 30, 2012, to continue offering assistance to TAA certified participants laid-off from Cessna and Hawker Beechcraft in 2011.

*KEEP:* WA was awarded a grant from the United States Department of Labor through the H-1B Visa funds to train engineers at WSU (funding is the same as the WIRED Grant in the past). The grant is five million dollars for four years. WA is awaiting final instructions and it is anticipated that students enrolled in the project will begin or continue education as a part of the KEEP Grant in January 2012.

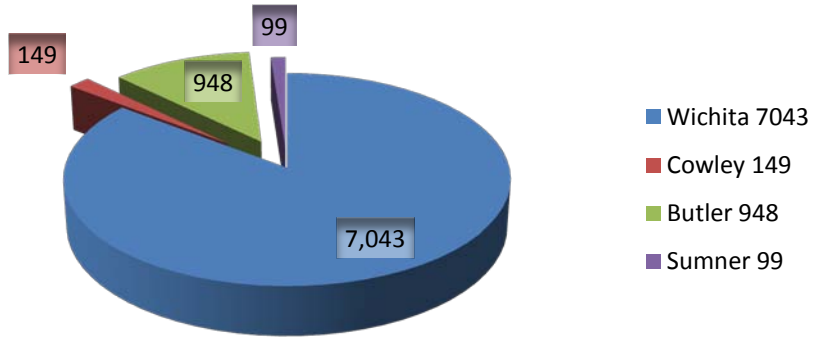
***Recommended Action: Receive and file.***



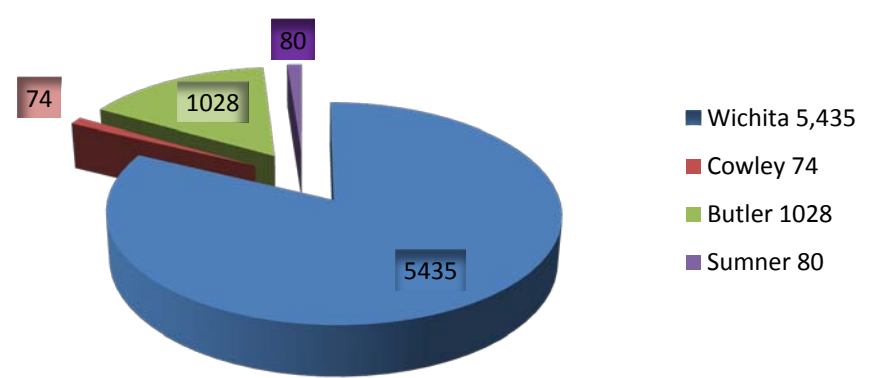
## CUSTOMERS SEVERED IN LOCAL AREA IV PY10 AND PY11



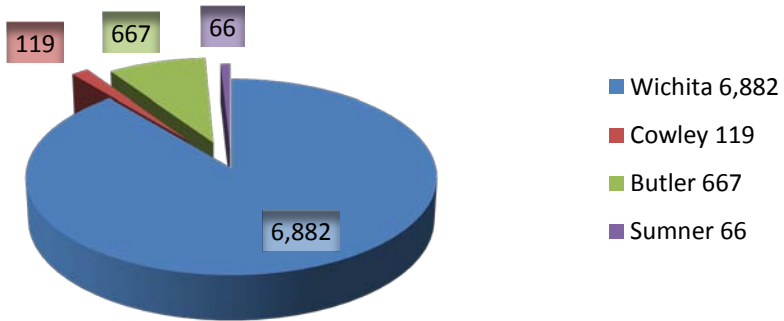
**OCTOBER PY'11 CUSTOMERS SERVED BY CENTERS**



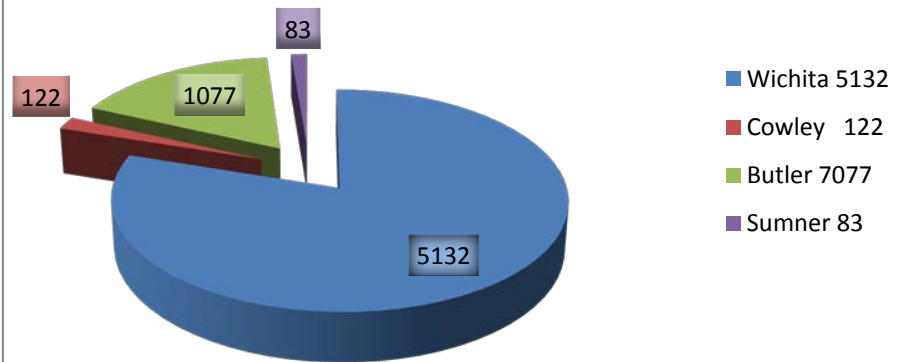
**SEPTEMBER PY'11 CUSTOMERS SERVED BY CENTER**



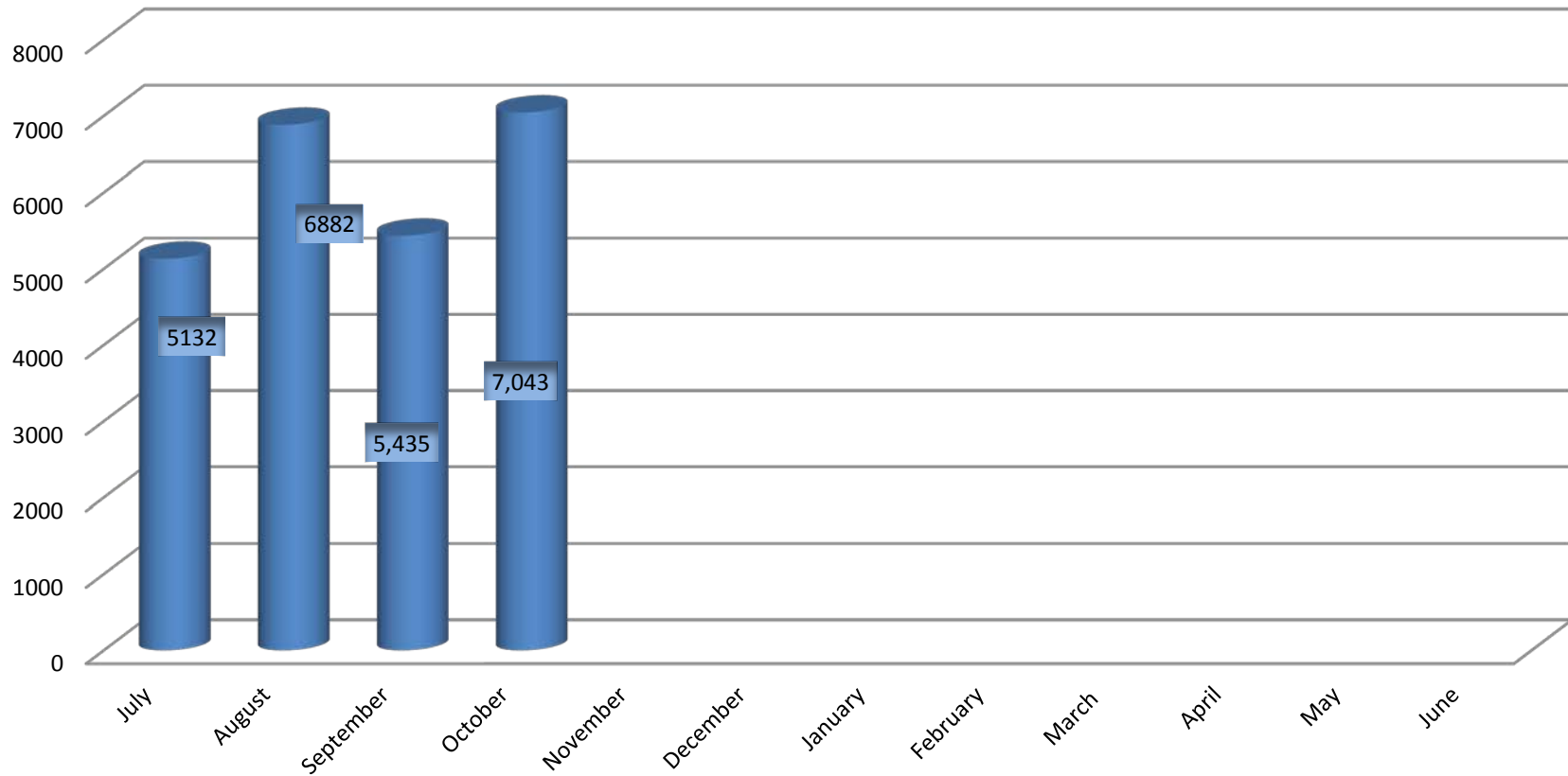
**August'11 Customers Served By Center**



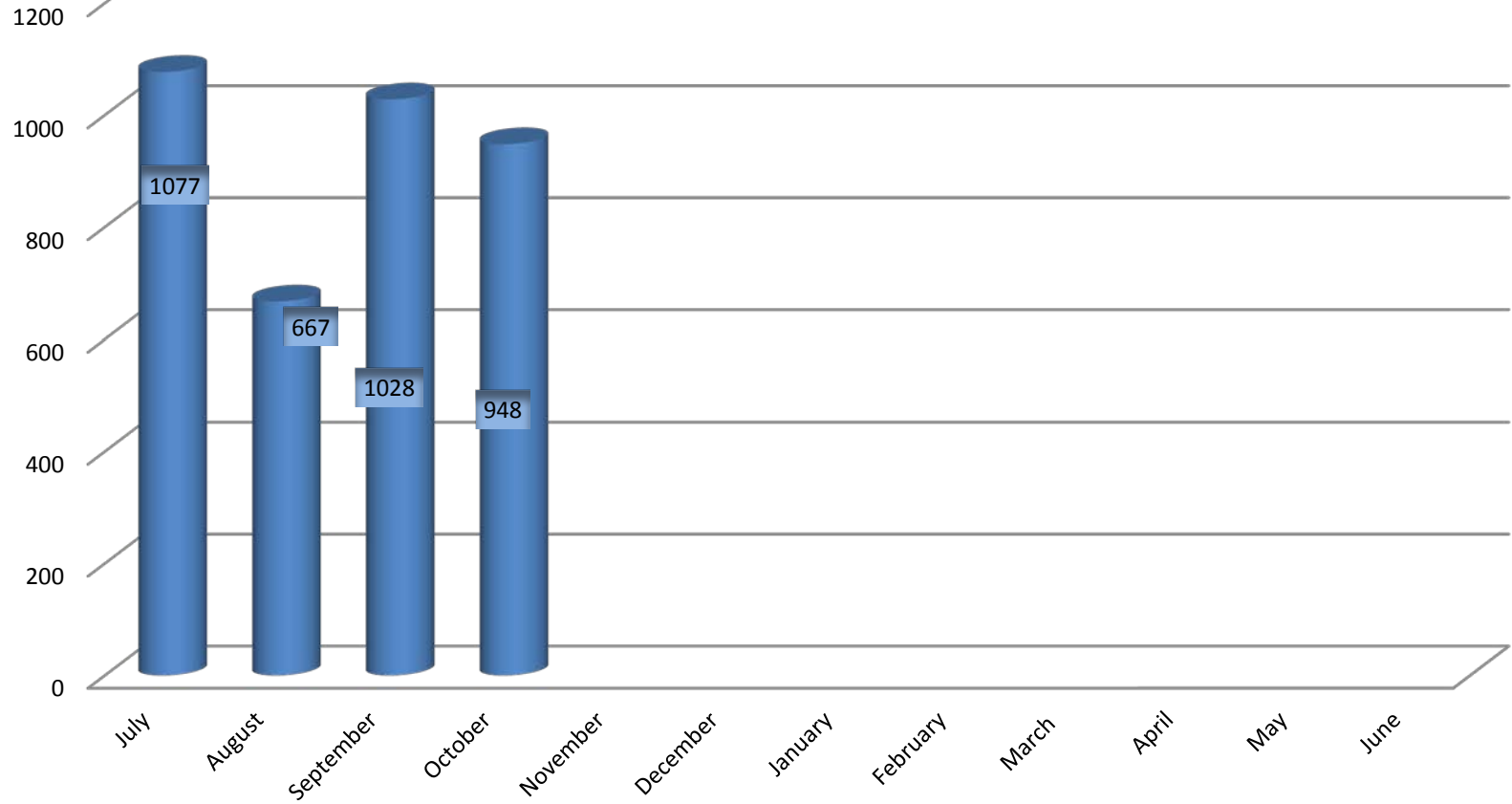
**July'11 Customers Served by Center**



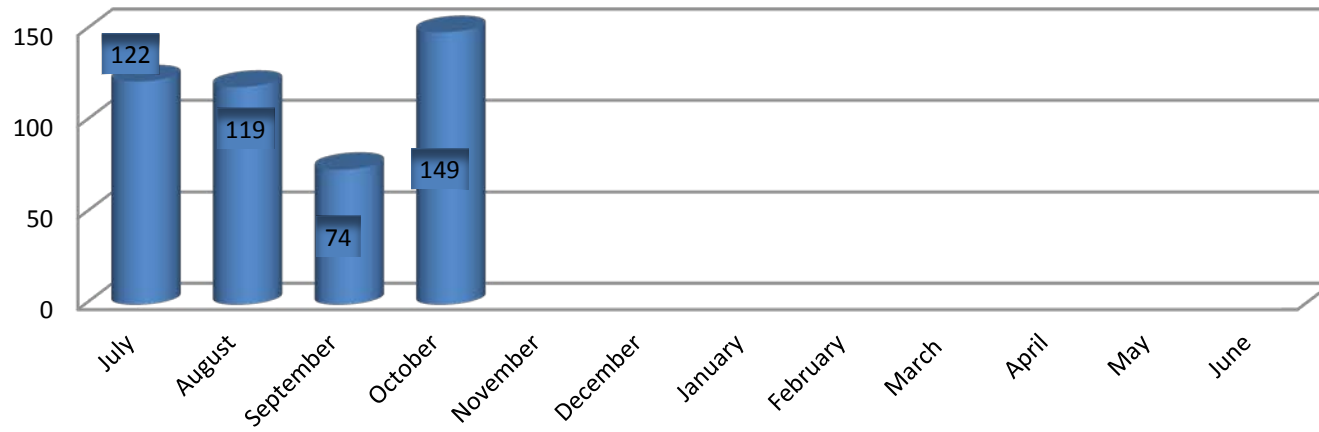
## Wichita Workforce Center



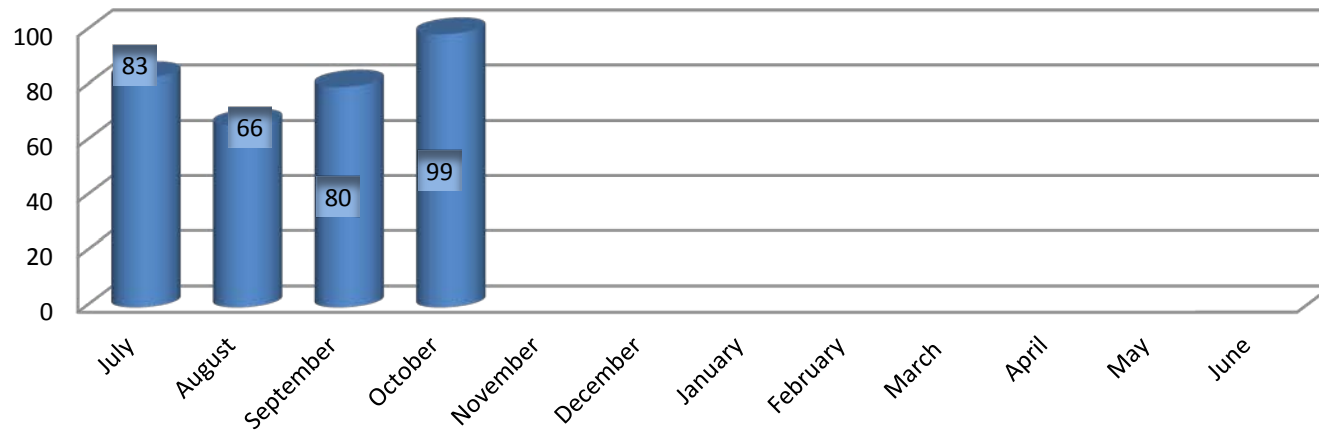
## Butler Workforce Center



### Cowley Workforce Center



### Sumner Workforce Center



Wichita		Butler		Cowley		Sumner		
<b>Career Center</b>	<b>4512</b>	<b>Career Center</b>	<b>273</b>	<b>Career Center</b>	<b>149</b>	<b>Career Center</b>	<b>99</b>	<b>Total</b>
RES Care	721	BCC Adult Ed	261					
Job Corps	194	BCC Allied Health	393					
Job Fairs	52	Older Workers	21					
Senior	48							
AIC	41							
Youth Program	151							
Meetings	751							
SRS	81							
TAA	62							
Veterans	140							
KHPOP/PACES	81							
REA	78							
NEG	131		0					
Wichita Total	7,043	Butler	948	Cowley	149	Sumner	99	<b>8,239</b>

**WIA Programs  
Program Year 2011  
Performance Report of LA IV  
as of 11/01/2011**

Adult	Goal	PY11 1st Qtr July 11- Sept 11	PY11 2nd Qtr Oct 11- Dec 11	PY11 3rd Qtr Jan 12- Mar 12	PY11 4th Qtr Apr 12- June 12	PY11 Annual July 11- June 12	State PY11 Annual July 11- June 12	*Reporting Period
	Sanction							
Entered Employment Rate	70%	55.6	164	173		635	3947	2nd Qtr= 1/01/11 to 3/31/11
	56.0%	295	56.7	305		1132	6237	Annual= 10/01/10 to 9/30/11
Retention Rate	84.0%	136	214			589	5689	2nd Qtr= 7/01/10 to 9/30/10
	67.2%	180	81.4	263		77.5	760	Annual= 4/01/10 to 3/31/11
Average Earnings	\$12,500.00	1,600,729	2,979,336			7,221,563	\$71,704,805	2nd Qtr= 7/01/10 to 9/30/10
	\$10,000.00	\$11,770.07	136	13922.13	214	\$12,260.72	589	Annual= 4/01/10 to 3/31/11

**Dislocated Workers**

Entered Employment Rate	80%	89	83			323	1301	2nd Qtr= 1/01/11 to 3/31/11
	64%	116	74.8	111		66.6	485	Annual= 10/01/10 to 9/30/11
Retention Rate	87%	66	88			235	1214	2nd Qtr= 7/01/10 to 9/30/10
	69.6%	93	87.1	101		87.7	268	Annual= 4/01/10 to 3/31/11
Average Earnings	\$15,700.00	1,036,675	1,382,669			3,977,368	\$21,096,627	2nd Qtr= 7/01/10 to 9/30/10
	\$12,560.00	\$15,707.20	66	\$15,712.15	88	\$16,924.93	235	Annual= 4/01/10 to 3/31/11

**Youth**

Placement Employment/Education	64%	6	0			17	370	2nd Qtr= 1/01/11 to 3/31/11
	51.2%	100	6	^^^	0	73.9	23	Annual= 10/01/10 to 9/30/11
Attainment Degree/Certificate	52%	7	0			25	307	2nd Qtr= 1/01/11 to 3/31/11
	41.6%	100	7	^^^	0	78.1	32	Annual= 10/01/10 to 9/30/11
Literacy/Numeracy Gains	42%	0	0			0	103	2nd Qtr= 10/01/11 to 12/31/11
	33.6%	^^^	0	^^^	1	^^^	1	Annual= 7/01/11 to 6/30/12

Summary	1st Qtr			2nd Qtr			3rd Qtr			4th Qtr		
	Adult	DW	Youth	Adult	DW	Youth	Adult	DW	Youth	Adult	DW	Youth
Met Goal		2	2	1	2	^^^						
Met Sanction	2	1		2	1	^^^						
Did Not Meet Sanction	1					^^^						

Summary	Annual			
	Adult	DW	Youth	State
Met Goal		2	2	6
Met Sanction	3	1		3
Did Not Meet Sanction				

Bold Numbers=Official Numbers from State and Will Not Change

\*\*\*\*\* The Kansas Department of Commerce accesses confidential databases to obtain additional wage data; therefore, the actual performance rating cannot be released, only whether the rating met, exceeded, or was below the goal or sanction level.

^^^ Agency did not have participants in this measure

\* Reporting Period=Participants who exited during the time frame indicated will count in performance measures

Adults	Program Year 2008	
	Goal	76.8
	Sanction	
Entered Employment Rate	83%	66.4%
Retention Rate	89.5%	71.6%
	71.6%	91.2
Average Earnings	\$12,500.00	\$10,000.00
	\$10,000.00	13,127.00

	Program Year 2009	
	Goal	50.3
	Sanction	
Entered Employment Rate	61%	48.8%
Retention Rate	89.5%	71.6%
	71.6%	85.1
Average Earnings	\$12,500.00	\$10,000.00
	\$10,000.00	11,444.00

	Program Year 2010	
	Goal	54.6
	Sanction	
Entered Employment Rate	70%	56%
Retention Rate	84%	67.2%
	67.2%	73.8
Average Earnings	\$12,500.00	\$10,000.00
	\$10,000.00	11,696.00

#### Dislocated Workers

	Program Year 2008	
	Goal	87.2
	Sanction	
Entered Employment Rate	90%	72.0%
Retention Rate	92%	73.6%
	73.6%	94.9
Average Earnings	\$16,000.00	\$12,800.00
	\$12,800.00	16,713.00

	Program Year 2009	
	Goal	49.8
	Sanction	
Entered Employment Rate	60%	48%
Retention Rate	92%	73.6%
	73.6%	89.7
Average Earnings	\$15,500.00	\$12,400.00
	\$12,400.00	12,667.00

	Program Year 2010	
	Goal	54.9
	Sanction	
Entered Employment Rate	80%	64%
Retention Rate	87%	69.6%
	69.6%	82.9
Average Earnings	\$15,700.00	\$12,560.00
	\$12,560.00	18,654.00

#### Youth

	Program Year 2008	
	Goal	68.2
	Sanction	
Placement Employment/Education	68%	54.4%
Attainment Degree/Certificate	52%	41.6%
	41.6%	56.9
Literacy/Numeracy Gains	37%	29.6%
	29.6%	37.7

	Program Year 2009	
	Goal	58.7
	Sanction	
Placement Employment/Education	68%	54.4%
Attainment Degree/Certificate	52%	41.6%
	41.6%	63.2
Literacy/Numeracy Gains	37%	29.6%
	29.6%	40

	Program Year 2010	
	Goal	77.8
	Sanction	
Placement Employment/Education	64%	51.2%
Attainment Degree/Certificate	52%	41.6%
	41.6%	74
Literacy/Numeracy Gains	42%	33.6%
	33.6%	100

#### Summary

	Program Year 2008		
	Adult	DW	Youth
Met Goal	2	2	3
Met Sanction	1	1	0
Did Not Meet Sanction	0	0	0

	Program Year 2009		
	Adult	DW	Youth
Met Goal	0	0	2
Met Sanction	3	3	1
Did Not Meet Sanction	0	0	0

	Program Year 2010		
	Adult	DW	Youth
Met Goal	0	1	3
Met Sanction	2	1	0
Did Not Meet Sanction	1	1	0

**Wagner-Peyser  
Program Year 2011  
Performance Report of LAIV  
as of 11/01/2011**

Wagner-Peyser	Goal	PY11 1st Qtr July 11- Sept 11	PY 11 2nd Qtr Oct 11- Dec 11	PY11 3rd Qtr Jan 12- Mar 12	PY11 4th Qtr Apr 12- June 12	*Reporting Period
	Sanction					
Entered Employment Rate	65%	56.11%	56.45%			2nd Qtr= 1/01/11 to 3/31/11
	52.0%					Annual= 10/1/10 to 9/30/11
Retention Rate	80%	79.33%	79.43%			2nd Qtr= 7/01/10 to 9/30/10
	64.0%					Annual= 4/1/10 to 3/31/11
Average Earnings	\$11,500.00	\$13,936.00	\$13,840.00			2nd Qtr= 7/01/10 to 9/30/10
	\$9,200.00					Annual= 4/1/10 to 3/31/11

**Summary**

	1st Quarter	2nd Quarter	3rd Quarter	4th Quarter
Met Goal	1	1		
Met Sanction	2	2		
Did Not Meet Sanction				

\*\*\*\*\* The Kansas Department of Commerce accesses confidential databases to obtain additional wage data; therefore, the actual performance rating cannot be released, only whether the rating met, exceeded, or was below the goal or sanction level.

\* Reporting Period=Participants who exited during the time frame indicated will count in performance measures

## Workforce Alliance Consolidated Budget PY11 July 2011 - June 2012

Full Accrual

Updated 11/8/2011

Category	PY11					Cumulative	Budget	%
	Budget	July	August	Sept	Oct		Balance	Remaining
Wages	\$ 2,575,366.18	\$ 195,869.22	\$ 201,239.29	\$ 169,853.18	\$ 198,940.33	\$ 765,902.02	\$ 1,809,464.16	70%
Taxes	\$ 295,637.07	\$ 14,694.96	\$ 15,177.70	\$ 12,440.78	\$ 17,636.28	\$ 59,949.72	\$ 235,687.35	80%
Benefits	\$ 311,937.93	\$ 24,459.86	\$ 21,835.62	\$ (3,903.53)	\$ 49,135.63	\$ 91,527.58	\$ 220,410.35	71%
Rent	\$ 260,139.37	\$ 72,554.30	\$ (33,512.66)	\$ 32,617.14	\$ 12,690.35	\$ 84,349.13	\$ 175,790.24	68%
Build Enh	\$ 5,000.00	\$ 14.16	\$ 337.53	\$ 240.73	\$ -	\$ 592.42	\$ 4,407.58	88%
Security	\$ 27,063.20	\$ 2,998.70	\$ 1,138.97	\$ 3,211.35	\$ 242.29	\$ 7,591.31	\$ 19,471.89	72%
Utilities	\$ 55,751.70	\$ 2,256.66	\$ 1,874.53	\$ 2,808.04	\$ 1,607.25	\$ 8,546.48	\$ 47,205.22	85%
Insurance	\$ 27,500.00	\$ -	\$ -	\$ 7,790.13	\$ (1,063.18)	\$ 6,726.95	\$ 20,773.05	76%
Communications	\$ 49,005.96	\$ 2,592.89	\$ 4,224.94	\$ 5,008.39	\$ 1,922.84	\$ 13,749.06	\$ 35,256.90	72%
Supplies	\$ 63,356.74	\$ 1,446.02	\$ 4,754.75	\$ 3,440.64	\$ 2,623.18	\$ 12,264.59	\$ 51,092.15	81%
Equipment	\$ 53,748.85	\$ 2,323.10	\$ 21,414.45	\$ 8,761.10	\$ 2,323.10	\$ 34,821.75	\$ 18,927.10	35%
Copy	\$ 51,963.24	\$ 5,831.42	\$ 4,801.11	\$ 4,240.59	\$ 4,215.71	\$ 19,088.83	\$ 32,874.41	63%
Postage	\$ 4,262.36	\$ 72.31	\$ 172.90	\$ 269.90	\$ 335.00	\$ 850.11	\$ 3,412.25	80%
Dues/Sub	\$ 7,500.00	\$ 3,300.00	\$ 75.00	\$ 295.00	\$ 0.01	\$ 3,670.01	\$ 3,829.99	51%
Conferences	\$ 43,727.00	\$ -	\$ 3,569.48	\$ 5,124.72	\$ 5,439.05	\$ 14,133.25	\$ 29,593.75	68%
Job Fairs	\$ 1,500.00	\$ -	\$ -	\$ (385.15)	\$ 1,108.00	\$ 722.85	\$ 777.15	0%
Meetings	\$ 29,791.60	\$ 231.37	\$ 2,593.43	\$ 1,507.03	\$ 1,291.53	\$ 5,623.36	\$ 24,168.24	81%
Outreach	\$ 15,127.00	\$ -	\$ 1,367.16	\$ 2,648.09	\$ 663.28	\$ 4,678.53	\$ 10,448.47	69%
Staff Development	\$ 35,619.58	\$ -	\$ 1,435.82	\$ 1,020.00	\$ 1,670.41	\$ 4,126.23	\$ 31,493.35	88%
Travel	\$ 62,048.39	\$ 1,210.42	\$ 4,620.96	\$ 3,657.01	\$ 2,846.42	\$ 12,334.81	\$ 49,713.58	80%
Contract Services	\$ 388,764.91	\$ 4,390.69	\$ 35,310.33	\$ 32,310.99	\$ 15,778.86	\$ 87,790.87	\$ 300,974.04	77%
SubRecipient Grants	\$ 79,615.00	\$ -	\$ -	\$ -	\$ -	\$ -	\$ 79,615.00	100%
Incentives	\$ 5,000.00	\$ 500.00	\$ 100.00	\$ 100.00	\$ 300.00	\$ 1,000.00	\$ 4,000.00	80%
Education & Training	\$ 4,749,230.36	\$ 58,265.52	\$ 249,353.84	\$ 342,537.48	\$ 164,267.72	\$ 814,054.06	\$ 3,935,176.30	83%
Supportive Services	\$ 654,945.19	\$ 13,569.10	\$ 47,385.93	\$ 31,800.12	\$ 21,934.55	\$ 114,689.70	\$ 540,255.49	82%
<b>Total</b>	<b>\$ 9,853,601.63</b>	<b>\$ 406,580.70</b>	<b>\$ 589,271.08</b>	<b>\$ 667,393.73</b>	<b>\$ 506,604.20</b>	<b>\$ 2,169,479.21</b>	<b>\$ 7,684,122.42</b>	<b>78%</b>

**Item**

REAP Involvement in Workforce

**Background**

The REAP Economic Development Committee is established to identify economic development issues of a regional concern and recommend actions to the full REAP membership. The EDC members are appointed by the REAP chair and meetings are held on the fourth Thursday each month, unless otherwise decided by the committee. Meetings of the EDC are conducted in compliance with state laws with respect to public notice, openness, accessibility, and non-discrimination.

**CHIEF ELECTED OFFICIALS BOARD (CEOB)**

Through an agreement entered into by counties in Local Area IV as defined by the State of Kansas, the Economic Development Committee has been designated to serve as the Chief Elected Officials Board, as defined in the Workforce Investment Act of 1998 in Local Area IV, which includes Butler, Cowley, Kingman, Harper, Sedgwick and Sumner counties. Members of the REAP Economic Development Committee who are appointed officials or represent jurisdictions outside of Local Area IV shall not have a vote when the Committee is conducting Chief Elected Officials Board business.

Specifically, REAP supports the REAP EDC in its role as CEOB to exercise oversight of the Workforce Alliance of South Central Kansas with respect to financial accountability, program performance, and public accountability as enumerated in the Operating Agreement. In addition, REAP assists the REAP Economic Development Committee carry out CEOB duties identified in the Workforce Investment Act and other duties consistent with the implementation of the Memorandum of Understanding.

**WORKFORCE ALLIANCE OF SOUTH CENTRAL KANSAS**

The Workforce Alliance of South Central Kansas is incorporated as a not-for-profit with primary duties of managing federal job training funds, operating One-Stop Workforce Centers and coordinating the public workforce system in South Central Kansas. Activities of the Workforce Alliance are carried out by professional staff led by an Executive Director, appointed by the Board of Directors.

Following the passage of the Workforce Investment Act (WIA) of 1998, the Workforce Alliance was incorporated as a not-for-profit corporation. As the Local Workforce Investment Board (LWIB) for Butler, Cowley, Harper, Kingman, and Sedgwick counties (Area IV), the primary duties of the Workforce Alliance are to manage federal job training funds, operate One-Stop Workforce Centers and coordinate the public workforce system in South Central Kansas. Day-to-day activities of the Workforce Alliance are carried out by skilled professional staff led by an Executive Director, appointed by the Board of Directors.

The primary function of the Workforce Alliance Board of Directors is to assure public funds invested in workforce development issues address the needs of employers and job seekers in South Central Kansas. WIA mandates that a majority of Board members come from the private sector. Representatives from various community based organizations and educational institutions which provide job-training services are also required to serve on LWIBs. There are a minimum of 36 voting members of the Workforce Alliance Board of Directors, which meets quarterly. Due to the large size of the Board of Directors, most of its work is done through a combination of standing committees and ad hoc taskforces. There are four committees which meet monthly: Executive, WIA Oversight, and Finance Committees.

Under WIA, LWIBs are encouraged to tailor priorities, operations and strategies to best meet the needs of the local labor market. Currently the Workforce Alliance serves as the operator of the One-Stop Workforce Centers in South Central Kansas. The Wichita Workforce Center is one of the premier facilities in the nation; in 2010, 92,108 job seekers received services and the Center hosted more than 50 job fairs. Along with the Wichita Workforce Center, the Workforce Alliance has offices in El Dorado, Cowley County and Wellington; staff is also available to assist job seekers and businesses as needed in Augusta, Anthony and Kingman. To accomplish this mission, Local Area IV was awarded approximately \$2.9 million for PY 2010 in WIA funds.

The Workforce Alliance of South Central Kansas has been the WIA Program Operator in Local Area IV since 2008.

In January of 2010 The Workforce Alliance was awarded a \$7,543,200 National Emergency Grant (NEG) through the U.S. Department of Labor in response to the overwhelming number of layoffs experienced in South Central Kansas, particularly in aviation and non-aviation manufacturing. Funding received from the National Emergency Grant will be used to provide training to approximately 1,100 eligible laid-off workers in South Central Kansas in new and emerging advanced manufacturing technology, healthcare, and other high demand occupations.

## **REAP Economic Development Committee (EDC) 2011 Work Plan**

**REAP Mission:** *To guide state and national actions that affect economic development in the region, and to adopt joint actions among member governments that enhance the regional economy.*

**Economic Development Committee (EDC) Purpose:** *Identify regional economic development issues and recommend action on those issues to REAP. In addition, since 2000 through an agreement entered into by counties in Local Area IV as defined by the State of Kansas, the EDC has been designated to serve as the Chief Elected Officials Board (CEOB), as defined in the Workforce Investment Act of 1998 in Local Area IV, which includes Butler, Cowley, Kingman, Harper, Sedgwick and Sumner counties. In performing duties as Chief Elected Officials Board under the Workforce Investment Act of 1998 the EDC ensures regional representation of the Local Workforce Investment Board and is generally responsible for conducting oversight and evaluation activities for all WIA programs.*

- 1) **Provide a unified voice** to promote regional economic development.
  - a) Collaborate with private, non-profit, and public sector stakeholders on regional economic issues.
    - i) Evaluate opportunities to exchange information with the private sector.
  - b) Strengthen relationships with existing partners.
    - i) Strengthen existing partnerships and relationships to encourage participation by other organizations.
  - c) Encourage dialogue on regional economic development.
    - i) Assist and participate in coordination of local economic development partners group in South Central Kansas.
  - d) Instill regional identity through coordinated branding.
    - i) Work with the Economic Development Partners to define and disseminate promotional information pertaining to the region to generate state dollars for sustainable infrastructure.
    - ii) Assure that the comparative analysis of the regional economy is completed and determine a method to disseminate the results of the analysis broadly with organizations concerned with economic development in the region.
    - iii) Include defining of economic development versus economic partnerships in the Strategic Focusing analysis.
  
- 2) **Guide state and national policies** that impact regional economic development.
  - a) Engage local leadership to represent the region at the state and national level.
    - i) Monitor the Kansas Bioscience Authority and KansasBio and explore opportunities for expanding bioscience industries in South Central Kansas.
    - ii) Monitor progress of economic development initiatives, specifically:
      - (1) Continued funding of Kansas Affordable Airfares Program.
      - (2) State action on technical education and workforce issues in terms of assuring local control.
      - (3) Local and regional initiatives to encourage growth and address the demands of future industry requests and skills in emerging markets.
      - (4) Local and regional initiatives in workforce development and technical training in manufacturing.
      - (5) State, local and regional initiatives for development of renewable energy.
    - iii) Monitor activities of federal, state, and local agencies affecting workforce development and keep members advised of relevant issues and partnership opportunities.
  - b) Develop relationships with state and federal governmental officials.
    - i) Evaluate the appropriate opportunities to engage federal delegation.
  - c) Establish a process to identify policies affecting specific industries.
    - i) Monitor and report on state policy changes that affect economic development or that hinder emerging industries through coordination with the regional economic development partners.

- d) Coordinate a unified agenda for regional economic development.
  - i) Review and assess other regions on methods of prioritizing economic development priorities.
  - ii) Identify and support regional economic development projects that qualify for state funding assistance.
  - iii) Identify opportunities for the region to take advantage of its geographic location and natural resources to enhance economic development and improve the quality of life in South Central Kansas.
  
- 3) **Engage stakeholders** on issues shaping our regional economy.
  - a) Provide regional forums that connect REAP membership with private, non-profit, and public sector stakeholders.
    - i) Determine the need to sponsor a regional economic leadership summit.
  - b) Conduct outreach on the purpose and accomplishments of REAP.
  - c) Involve REAP membership in educational opportunities.
  
- 4) **Support inter-jurisdictional planning** on issues affecting economic development.
  - a) Promote the benefits of a sustainable regional economy.
  - b) Determine REAP's role in regional planning.
    - i) Identify regional planning initiatives to promote through education/awareness.
    - ii) Coordinate local activities when appropriate to engage citizens on the benefits of regional sustainability.
    - iii) Identify and coordinate local working groups on regional planning initiatives when appropriate.
  - c) Engage professional staff in multiple jurisdictions for sustainable planning.
  
- 5) **Lead the region** in addressing future economic needs.
  - a) Create a vision for regional economic development through REAP.
  - b) Determine the organizational capacity to support the future structure and needs of REAP.
    - i) Perform duties as Chief Elected Officials Board under the Workforce Investment Act of 1998.
  - c) Be proactive in identifying and discussing emerging issues.
    - i) Identify ways to engage partners and others committed to economic development in the Committee.
    - ii) Conduct a "Listening" Tour to identify issues of importance.
    - iii) Consider alternative sites for REAP Committee meetings to encourage broader participation.



