

REAP

*of
South Central
Kansas*

REGIONAL ECONOMIC AREA PARTNERSHIP



2010 Annual Report

1845 Fairmount Ave , Box 155 • Wichita, Kansas 67214 • Phone: 316- 978-6542 • Fax: 316-978-6533
www.reap-ks.org





2010 Annual Report

Table of Contents

Letter from Mayor Kristey Williams, Chair	Page 2
History of REAP	Page 3
Members and Committees	Page 4
Organizational Chart	Page 5
Partners	Page 6
Financials	Page 7
2010 Highlights & Accomplishments	Page 8
South Central Kansas Economic Information	Page 12
Letter from Dane Baxa, Executive Officer Water Resources	Page 13
Letter from Joe Yager, Chief Executive Officer	Page 14

Letter from Kristey Williams, REAP Chair

As Chair of the Regional Economic Area Partnership, I think it's safe to say that everyone involved with REAP – members, partners, and friends have the same purpose in mind – one of building consensus on agreed objectives that enhance our regional economy.

Here at REAP, we implement the principle that local, state, and federal governments are all partners in public service with one core objective – supporting policies and practices that positively impact the people of South Central Kansas. Cooperation and collaboration are essential as we work together to speak with one voice on issues that impact South Central Kansas.

Over the years, we have been very successful regularly meeting together, sharing ideas and priorities, and building a sense of trust between our respective jurisdictions. In fact, after thirteen years we are standing strong with a membership of thirty-seven city and county governments in South Central Kansas.

However, having experienced many successes, many of which are illustrated in this 2010 Annual Report, we are also facing new challenges. With changes in REAP leadership, current and anticipated requests from other organizations, and our current economic environment -- we will need to work hard over the next year to reinforce the value of the REAP organization, to strengthen commitment to the REAP mission, and to set forth a framework for the direction of the REAP organization.

To quote Newton City Manager Randy Riggs, 'we need to behave ourselves into a new way of thinking.' So, here we go – our challenge moving forward it to take advantage of an opportunity to build on past successes as we look at ways to strengthen our regional partnership.

The following pages of the 2010 Annual Report will provide additional information about the accomplishments of REAP. I would like to thank the team of dedicated Board Members, partners, and staff for their continued support and I look forward to continuing our work of strengthening our region.



A handwritten signature in black ink that reads "Kristey Williams". The signature is fluid and cursive.

Mayor Kristey Williams, Chair

REAP's Mission Statement

"Guide state and national actions that affect economic development in the region and adopt joint actions among member governments that enhance the regional economy."

History of REAP

In 1997, 27 cities passed resolutions adopting an intergovernmental agreement creating the South Central Regional Council of Governments. In 1999 REAP extended membership to county governments. Currently REAP has representatives from 37 local governments, twenty-nine cities and seven counties. Since its inception, REAP has grown as a regional organization and is now an established voice on issues of common concern among local governments in South Central Kansas.

Due to its role as a regional coordinator and leader REAP has been invited to serve on the following regional boards and commissions:

- Greater Wichita Economic Development Coalition
- KansasBio
- Mid-Continent Airport Advisory Board
- Visioneering Wichita

REAP has also been invited to serve or participate with the following:

- Jabara Campus Project Steering Committee
- KDOT Special Committee for 2009 Comprehensive Transportation Plan
- Wichita International Trade Processing Center Feasibility Committee
- Central Plains Quad – County Planning Forum
- Wichita Area Metropolitan Planning Organization
- South Central Kansas Economic Development District (SCKEDD)

Since 2006 REAP, as directed by the State of Kansas, has administered the five-year, \$25 million, Kansas Affordable Airfares Program, to provide more air flight options, more competition for air travel, and affordable air fares for Kansas.

REAP also tries to act proactively in activities to bring regional stakeholders to speak about common issues. Since 2006, REAP has partnered with Visioneering Wichita to conduct an annual leadership summit that attracts business and governmental leaders from throughout South Central Kansas to discuss “Our Economic Future.”

The REAP Economic Development Committee serves as the Chief Elected Officials Board over seeing more than \$5 million in federal funds for Local Service Delivery Area IV under the Workforce Investment Act of 1998. Local Area IV Consists of Butler, Cowley, Harper, Kingman, Sedgwick, and Sumner Counties.

Each year REAP adopts a legislative platform, and cultivates relationships with area legislatures to gain favorable outcomes for the region and State of Kansas.

The REAP Water Resources Committee serves as a regional conduit of information and education regarding water quality and supply issues in South Central Kansas.

REAP Members

Andover
Arkansas City
Augusta
Bel Aire
Bentley
Benton
Butler County
Cheney
Clearwater
Colwich
Conway Springs
Derby
El Dorado
Garden Plain
Goddard
Halstead
Harvey County
Haysville

Hesston
Hutchinson
Kechi
Kingman County
Maize
McPherson
McPherson County
Mount Hope
Mulvane
Newton
Park City
Reno County
Rose Hill
Sedgwick County
Sumner County
Valley Center
Wellington
Wichita

REAP Committees

2010 Executive Committee

Assists the Chair in developing agenda items, policy issues, or administrative matters to be presented to REAP; handling special tasks, as determined by the Chair, which require action between regular meetings of REAP; and monitoring adherence to the fiscal procedures of REAP.

Mayor Kristey Williams (Augusta), Chair •
Commissioner Dave Unruh (Sedgwick County) • Council Member Jeff Longwell (Wichita) •
Mayor Willis Heck (Newton) • Commissioner Garey Martin (Sumner County) •
Commissioner Chip Westfall (Harvey County) • Mayor Terry Somers (Mount Hope)

Economic Development Committee

Identifies regional economic development issues and recommends action on those issues to REAP.

Commissioner Dave Unruh, Chair

Legislative Committee

Identifies legislative issues of regional concern and recommends to REAP legislative action at the state or federal level.

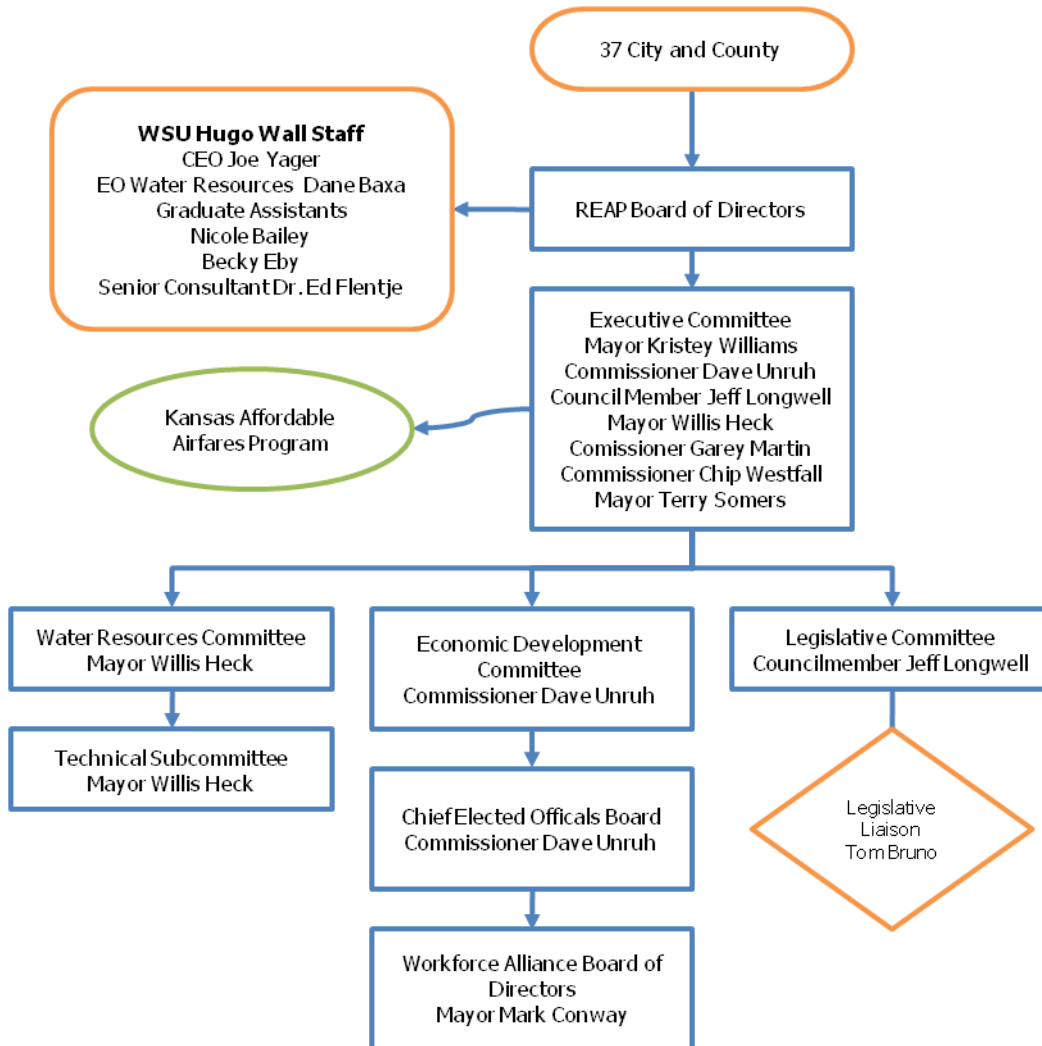
Council Member Jeff Longwell, Chair

Water Resources Committee

Identifies and coordinates collaborative efforts on regional issues of water quality and supply in South Central Kansas.

Mayor Willis Heck, Chair

REAP Organizational Chart



REAP Regional and State Partnerships

Greater Wichita Economic Development Corporation • Airport Advisory Board
 Visioneering Wichita • KansasBIO • Quad County • SCAC • WAMPO
 Regional Economic Development Partners • Kansas Water Authority • Lower Arkansas Basin
 Advisory Committee • Walnut Basin Advisory Committee • Kansas Water Office
 Arkansas River Coalition • Wichita Area Chamber • Environmental Resources Committee
 Kansas Rural Water Association • Bureau of Reclamation

REAP Partners



HUGO WALL SCHOOL
of Urban & Public Affairs



Greater Wichita Economic
Development Coalition

BUSINESS AT FULL THROTTLE



REAP Financials 2006-2010

REAP Operating

	2006 Actual	2007 Actual	2008 Actual	2009 Actual	2010 Projected
Budgeted revenues:					
Assessments	97,066	99,904	100,627	105,850	102,100
Workforce Oversight Agreement	-	12,000	22,190	17,000	16,000
Kansas Affordable Airfares Program	-	25,000	25,000	-	25,000
Other Revenues Received (interest, etc.)	618	2,744	5,160	2,214	523
Carryover Funds	4,315	6,802	5,574	19,759	(2,562)
Total Revenues	101,999	146,450	158,551	144,823	141,061
Budgeted expenditures:					
Assistance - WSU	63,525	82,540	83,030	88,380	86,037
Other Current Expenses	-	19,340	19,340	18,840	18,610
Meeting Expenses	4,022	7,175	6,378	6,482	3,907
KAAP Expenses	-	352	145	-	-
Liaison/Legislative Expense	15,980	22,844	25,958	33,259	25,294
Project Funds	11,670	8,625	3,941	424	2,467
Total expenditures	95,197	140,876	138,792	147,385	136,315
Budget income (loss)	6,802	5,574	19,759	(2,562)	4,746

REAP WRC Operating

	2006 Actual	2007 Actual	2008 Actual	2009 Actual	2010 Projected
Budgeted revenues:					
Assessments	-	70,950	119,700	84,400	80,400
Other Revenues Received (interest, etc.)	-	35,658	1,346	2,449	5,719
Carryover Funds	-	-	86,255	68,654	66,419
Total Revenues	-	106,608	207,301	155,503	152,538
Budgeted expenditures:					
Assistance - WSU	-	15,230	83,030	70,079	72,584
Other Current Expenses	-	1,524	19,340	7,010	7,260
Meeting Expenses	-	3,599	6,378	8,424	7,349
Liaison/Legislative Expense	-	-	25,958	-	-
Project Funds	-	-	3,941	3,571	4,976
Total expenditures	-	20,353	138,647	89,084	92,169
Budget income (loss)	-	86,255	68,654	66,419	60,369

2010 Highlights

Executive Committee

In January of 2010 Mayor Kristey Williams of Augusta was named the **new REAP Chair**, to succeed Mayor John Waltner of Hesston who has stepped down as Mayor of Hesston to serve as the new County Administrator for Harvey County.

In May REAP elected **Mayor Kristey Williams**, City of Augusta, to serve as Chair and **Commissioner Garey Martin**, Sumner County, to serve as Vice-Chair. In addition, Chairman Williams nominated members to serve on the Executive Committee, those of which are listed earlier in this report.

REAP is responsible for evaluating and awarding funds for the purpose of the **Kansas Affordable Airfares Program (KAAP)**. In 2010 REAP released an *addendum to the original request for proposals* for remaining fiscal year 2010 funds and awarded a proposal from Sedgwick County to maintain affordable airfares to western U.S. destinations. REAP also *continued the program into its fifth year of funding* with the release of an RFP for fiscal year 2011, followed by action to award the funding to Sedgwick County to address all statutory criteria. A *report on the performance of the program* was prepared and submitted to the State of Kansas and made available on the [REAP website](#).

In November of 2010 REAP met with staff members of the Legislative Division of Post Audit regarding the **legislative audit of the State Affordable Airfare Fund**. The initial review was positive; however, staff will continue to work with the auditors to provide additional information as the auditors expect to complete this process by the start of the 2011 legislative session.

The Executive Committee is charged to serve as the **treasury for REAP** and in 2010, they served this role through several actions, including: a *financial correction* based on consultation in 2009; *revision of the REAP fiscal procedures* due to adoption of a new REAP WRC assessment structure; *updated member assessments* based on official 2010 State certified population; and *adopted operating budgets for 2011*.

In August of 2010, REAP served as the lead applicant organization for the Housing and Urban Development (HUD) **Sustainable Communities Planning Grants Program** for regional planning. REAP created a consortium for this application that included local units of government in Butler County, Harvey County, Reno County, Sumner County, and the following cities: El Dorado, Newton, Hutchinson, Wellington, and Wichita. In addition, the consortium included the Wichita Area Metropolitan Planning Organization (WAMPO); Wichita State University's Hugo Wall School; Visioneering Wichita; and the Kansas Health Foundation. The consortium identified five focus areas: Housing; Environment (air quality and water); Transportation; Economic development (long-term job creation); and Healthy Community Design.

REAP held a **strategic planning session** in November 2010 designed to engage REAP members and stakeholders in discussion on the future direction of REAP. The retreat included *Mayor Laura McConwell* (Mission) who focused on the importance of jurisdictions working together across traditional boundaries. There was also a panel response that allowed participants to hear perspectives from business, workforce development, and local government. Participants also held group discussions of issues that REAP may face in the next 3-5 years as well as possible goals for the REAP organization. The retreat was facilitated by *Ms. Misty Bruckner* of the Hugo Wall School, WSU.

2010 Highlights

Economic Development Committee

The EDC is designated to serve as the **Chief Elected Officials Board (CEOB)**, as defined in the Workforce Investment Act of 1998. Under this role the Committee took actions to: *identified and appointed* individuals to the Workforce Alliance *Board of Directors*; reviewed and approved the *operating budgets* and other *fiscal issues*; reviewed *performance* of the Workforce Alliance; and maintained *general oversight of the operations* of the Workforce Alliance.

The EDC developed a process in 2010 known as **Strategic Focusing** to use a comparative analysis of the regional economy to identify the strengths and weaknesses and recommend action to address them. Dr. John Wong, WSU, led the Committee during regularly scheduled meetings to analyze the data and created a draft report of the findings. This report has been placed on the REAP website under the Strategic Focusing page and will be used to begin planning for a potential economic summit.

In January REAP released a report with Visioneering Wichita and the Wichita Metro Chamber of Commerce titled “**Economic Development Information: January 2010**” that illustrates economic contributions of the South Central Kansas Economic Corridor, some of the statistics from that report can be found on page 12 of this report.

In early 2010 the EDC nominated a **WIRED SWOT/Visioning/Goal Setting task force** that was comprised of a representative of each of the ten counties in the WIRED region to determine next steps.

Ms. Debbie Franklin, WSU, served as the program director for the **Composites Kansas WIRED grant** initiative that ended June 30, 2010. Many new and creative training, education, support and outreach programs, and activities were created as a direct result of this initiative.

REAP staff spent time in 2010 working with the GWEDC, members of the **Regional Economic Development Partners** (the local economic development agencies and professionals in the region), CEDBR, and Workforce Alliance to develop ongoing communication and meetings for the Regional Partners.

Mr. Ronnie Bryant, president and CEO of the Charlotte Regional Partnership, along with Mr. Tim Chase, president and CEO of Wichita Falls Chamber of Commerce, were the featured speakers for both the GWEDC investor meeting and the **REAP and GWEDC sponsored Regional Economic Development Workshop – Building Blocks of Competitiveness** on July 14, 2010.

Legislative Committee

The number one priority for REAP was the **affordable airfares** initiative which was successfully funded for a fifth consecutive year.

Restoration of historic tax credits was not a REAP priority, however, due to the large number of communities across the region that have accessed this economic development tool REAP adopted a position statement and ultimately the legislature restored these credits.

In an effort to **increase awareness and engagement** REAP staff created a two page document on how to get involved in the legislative process. Members were encouraged to engage their legislators at local meetings and support them in their efforts for our region.

2010 Highlights

REAP worked with the Workforce Alliance to encourage employers and business leaders from across Kansas to raise awareness about the importance of **technical education to economic growth**.

Governor Mark Parkinson signed HB 2650, the **new Kansas Transportation Program**, T-WORKS, into law on May 25. REAP supported the creation and funding of this program as it is expected to create tens of thousands of jobs and invest billions of dollars in the Kansas economy over the next ten years.

The REAP Legislative Committee worked to formulate a process for REAP to take the initiative in bringing the region together to discuss and prioritize the top tier listing of potential **regional transportation** projects to receive funding for South Central Kansas as identified by KDOT. In September REAP hosted a regional transportation meeting that led to the compilation of an informational report that helped identify and encourage members to become educated on the projects in our region while ensuring that our region participated in the process.

REAP served as the host of the **2010 South Central Kansas Legislative Policy Summit**, held on December 2 in Wichita at the Courtyard Marriott at Old Town. REAP co-sponsored the luncheon and keynote address by Congressman-elect Mike Pompeo with the Wichita Independent Business Association. Presentations were made on: Aviation & Manufacturing; Education & Workforce Development; Affordable Airfares; the Kansas Budget; Trade; the Transitioning Economy; Perspectives on Water Issues; and Healthcare in Kansas.

Water Resources Committee

Water and Wastewater Rate Surveys were completed for all REAP member municipalities in an effort to compare rate structures for utilities and promote dialogue among communities as to the true cost of water and wastewater service. Surveys will be continually updated on an annual basis every January.

The **3rd Annual Regional Water Conference titled “Funding a New Era of Water Service,”** was held on May 27th in El Dorado. Keynote speaker Gary L. Rowe from the United States Geological Survey, shared his experiences from working on the National Water Quality Assessment Program, studying trends in urbanization and its effect on water quality. Participants also toured the newly completed El Dorado Wetlands and Water Reclamation Facility.

A new ***Rate Structure*** was adopted and will go in effect 2011. This will provide the committee with a more equitable assessment structure, while also allowing REAPs strategic planning process to sustainably carry forward.

The ***Water Resources Planner*** was developed and presented at REAP events, Basin Advisory Committees, and to other organizations. The inventory provides GIS based data and gives a better understanding of the natural resources contained within the region, helping aid decision making with respect to land use and development decisions.

The Guidelines for Transfer of Water Service Territory Between Cities and Rural Water Districts were developed in partnership with the Kansas Rural Water Association, Kansas Municipal Utilities, League of Kansas Municipalities. These help prevent conflicts between RWDs and cities; provide factors for consideration to determine compensation in the case of annexation; and templates for case by case agreements.

2010 Highlights

A letter supporting the *Revaluation of the State Water Policy* was submitted to the League of Kansas Municipalities. The committee suggested reevaluation of the KWA representation, revenue sources and distribution of the state water fund, and the Kansas legislative process for introduction, consideration, and adoption of the annual KWA budget.

WaterWise continues to be a well-received informational resource for both members and outside officials. The newsletter has been in existence for over two years now.

Other Highlights

In 2010 the **EPA Region 7 Environmental Finance Center (EFC)** grant was awarded to the Hugo Wall School. The general purpose of an EFC is to facilitate state and local governments working with businesses to create environmentally and financially sustainable systems. REAP Executive Officer of Water Resources Ms. Angela Buzard was named Director of the EFC.

In August the Hugo Wall School at Wichita State University announced the appointment of Mr. Dane Baxa as a public affairs associate, which was followed by his appointment as only the second **REAP Water Resources Executive Officer**.

In January, REAP members were invited to **tour the newly opened Intrust Bank Arena**. In May the **City of Newton hosted REAP** at Chisholm Trail Shopping Center and Outlet Mall in Newton. And in December, REAP members were able to **tour the National Center for Aviation Training (NCAT)**.

In March, REAP Chief Executive Officer, Joe Yager, in conjunction with the Workforce Alliance attended the **2010 National Association of Workforce Boards Forum** in Washington, DC, from March 6-9 and met with both Kansas Senators.

Kansas State Representative Raj Goyle and Mr. Mike Pompeo, **candidates from the 4th Congressional District** attended the October meeting, introduced themselves and presented their platforms for success for our region and state.

REAP and other partners co-hosted with KansasBIO a **Hot Teams Meeting** in Wichita in October 2010 at the National Center for Aviation Training to enhance communications between the bioscience industry and education in South Central Kansas, and develop a bioscience workforce roadmap for success.

More than 50 business, academic, civic and government leaders participated in a four-day **Visioneering Wichita city-to-city visit to Louisville, KY**, October 10-13. The focus of the trip was to examine how Louisville undertook an effort to revitalize its downtown and economy through public and private initiatives. REAP and local government was represented by REAP Chair Mayor Kristey Williams of Augusta, Sedgwick County Commissioner Tim Norton, Council Member Janet Miller of Wichita; Ron Holt and Kristi Zukovich, Sedgwick County; and REAP CEO Joe Yager. Several REAP partners also attended, including Keith Lawing, WA; Anne Corriston, WA; Jeremy Hill, CEDBR; Vicki Pratt Gerbino, GWEDC; and Andy Schlapp, WSU.

South Central Kansas Economic Information

Not only is the South Central region home to the largest employers in the state, but it is also one of the highest producing metropolitan areas in the country.

The region's strong and steady economy is fueled by the aviation, composites, healthcare and information technologies industries, which are critical to the economic vitality of the entire state of Kansas. To compete in the global marketplace, the South Central Kansas region has positioned itself at the center of research, training and innovation.

The South Central Region is the second largest regional economy in Kansas and home to the largest aviation manufacturing cluster and largest composite cluster in the world.

Population & Employment

South Central Kansas is home to more than 730,000 people, accounting for nearly **28%** of the population and with more than 393,000 civilian workers it is nearly **28%** of the employment in the state.

Individual Income Tax

The South Central Kansas Region accounts for **30%** of the Income Tax Liability for the state.

<i>Largest Employers in 2010</i>	
Koch Industries	Bombardier Aerospace
Kroger Company/Dillons	Learjet
Spirit AeroSystems Inc.	Hawker Beechcraft
Viega	AGCO Corporation
Boeing IDS	Via Christi Health System
Johns Manville	Wesley Medical Center
Cessna Aircraft Company	Excel Meat Solutions

Sales Tax

With retail sales in excess of \$7.6 billion, the South Central Kansas Region accounts for **28%** of total sales in Kansas.

Vehicle Property Tax

South Central Kansans pay **27%** of Vehicle Property Taxes in the state.

Real/Personal Property and Assessed Tangible Valuation

22% Tangible Valuation and **23%** Real/Personal Property in the South Central Kansas Region

Per Capita Income

With a Per Capita Income of **\$35,522**, the South Central Kansas Region is higher than the state average. Aviation, composites and healthcare help to drive the employment and economy in the Region and in the State. These strong industries offer high wages, with other jobs created in support of the industries.

Total annual personal income of the counties in the South Central Kansas Region is \$27,695,510,246, which is **28%** of the state.

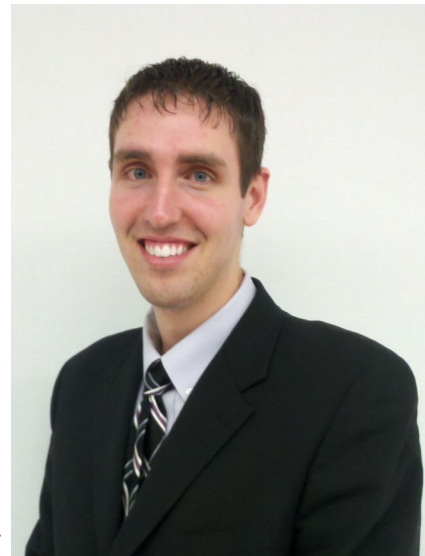
The data contained on this page was compiled from U.S. Census, County Economic Vitality & Distress – Kansas Inc., and the Center for Economic Development and Business Research at Wichita State University.

Letter from the Executive Officer for Water Resources

We never know the worth of water till the well is dry.”

- *Thomas Fuller*

What is the value of a resource that over 730,000 people and 40% of Kansas’ manufacturing rely on in South-Central Kansas? It’s easy to forget that without access to clean water, economic development is difficult to accomplish. The REAP Water Resources Committee (WRC) provides a regional voice to ensure that our water resources are sustained for years to come. I am honored to serve as Executive Officer of the WRC to ensure our communities have affordable access to this precious resource.



For the operations of the WRC, the most significant event in 2010 was our 3rd annual Regional Water Conference “Funding a New Era of Water Service” held in El Dorado. With our own transitioning of Angela Buzard, former REAP WRC Executive Officer, to director of the Environmental Finance Center at Wichita State University, there was a great partnership opportunity at the conference for communities to learn about funding infrastructure projects, setting water rates, and hearing from a keynote presenter from the United States Geological Survey.

2010 also brought an extensive strategic planning process for the Regional Economic Area Partnership organization, and the Water Resource Committee has taken up the challenge to ensure that our committee’s accomplishments are aligned with REAP’s strategic plan. Our mission under REAP is to ensure our regional economy can continue to develop with a sustainable supply of water resources.

In meeting this mission, our committee’s goals for the upcoming year are to engage members in meaningful dialogue by presenting issues at WRC meetings and facilitating discussion among members and speakers. We will be focusing on several issues, such as:

- Conservation as a beneficial use in state water rights policy
- Interconnections for meeting long-term water supply needs
- Re-evaluation of the Kansas Water Authority

I look forward to 2011 with new leadership at the state and national level, and the challenges and opportunities to keep members informed on the value of sustaining a healthy water quality and supply for economic development in South-Central Kansas.

Finally, I would like to thank all of our members and partners for their continued engagement in the WRC.

A handwritten signature in black ink that reads "Dane Baxa". The signature is written in a cursive, flowing style.

Dane Baxa, Executive Officer
Regional Economic Area Partnership Water Resources Committee

Letter from the Chief Executive Officer

“Because things are the way they are, things will not stay the way they are.” In reflecting on events of the past year, this quote by Bertolt Brecht seems especially profound. Although this “Great Recession” reached its peak in 2009, this year brought several challenges and changes for local, state and national economies. Due to our strong industrial base, our region constitutes more than one-third of manufacturing employment and almost one-half of income from manufacturing in Kansas. This made our region one of the hardest hit and our local economies have reflected it. Now, while signs of recovery are starting to appear, there is still much work to be done.



For the operations of REAP we took important strides in 2010 to help shape our direction moving forward as a region. One of the most significant events was undertaking a strategic planning process to reinforce our value, strengthen our commitment, and set forth a framework for direction. In coordination with this process, interviews with key partners and stakeholders helped identify REAP’s strengths, determine current and future challenges, and will help define its role and purpose for the region. In addition, the annual survey and strategic planning session engaged REAP members and stakeholders in discussion on the future direction and sustainability of REAP over the next three to five years.

It is impossible to encompass all of our accomplishments of the past year in this limited space, but they are summarized on proceeding pages. I would be remiss however, for not pointing out the positive impacts of the Kansas Affordable Airfares Program. In the 2006 session of the Kansas legislature the KAAP was launched to create an air travel environment in Kansas that supports business travelers, leisure travelers, and helps keep travel-related revenues in Kansas. REAP was assigned the authority to administer the KAAP and since then we have worked to make sure that affordable air fares is recognized as a key component of our economic vitality. Over the past five years this program has demonstrated success and we now face the challenge of creating a longer term solution for 2011 and beyond.

However, this is not the only challenge facing REAP, and I am looking forward to 2011, where the mantra of change will be very apparent. The REAP Board will focus on a conclusion to the strategic planning process and there will be many functional changes made to the engagement and participation, long-term organizational sustainability, coordinating regional water planning, and workforce development.

2011 will bring new opportunities, with a new governor in Kansas and a change of leadership in Congress, REAP members will be needed to assist in policy awareness activities.

I want to thank our members and partners as another year ends and let you all know how proud I am to serve the Regional Economic Area Partnership of South Central Kansas.

A handwritten signature in black ink that reads "Joe Yager". The signature is written in a cursive, flowing style.

Joe Yager, Chief Executive Officer



Acknowledgements

The creation of the annual report is a large feat and is made possible through the teamwork of dedicated individuals. Special thanks is extended to REAP Graduate Assistant Ms. Nicole Bailey for serving as editor-in-chief on this report. Additional thanks to Dr. Ed Flentje, Dr. John Wong, Ms. Angela Buzard, Ms. Anne Jacobson, and Ms. Becky Eby for their contributions over the past year.

REAP also recognizes and appreciates the continued support from the Hugo Wall School of Urban and Public Affairs at Wichita State University. For the past 12 years the school has provided assistance to REAP through staffing, research and service that makes a distinct contribution to Wichita State University's long-standing commitment of service to Wichita, the surrounding communities, and the region.
