



WICHITA STATE
UNIVERSITY

FAIRMOUNT COLLEGE OF
LIBERAL ARTS AND SCIENCES

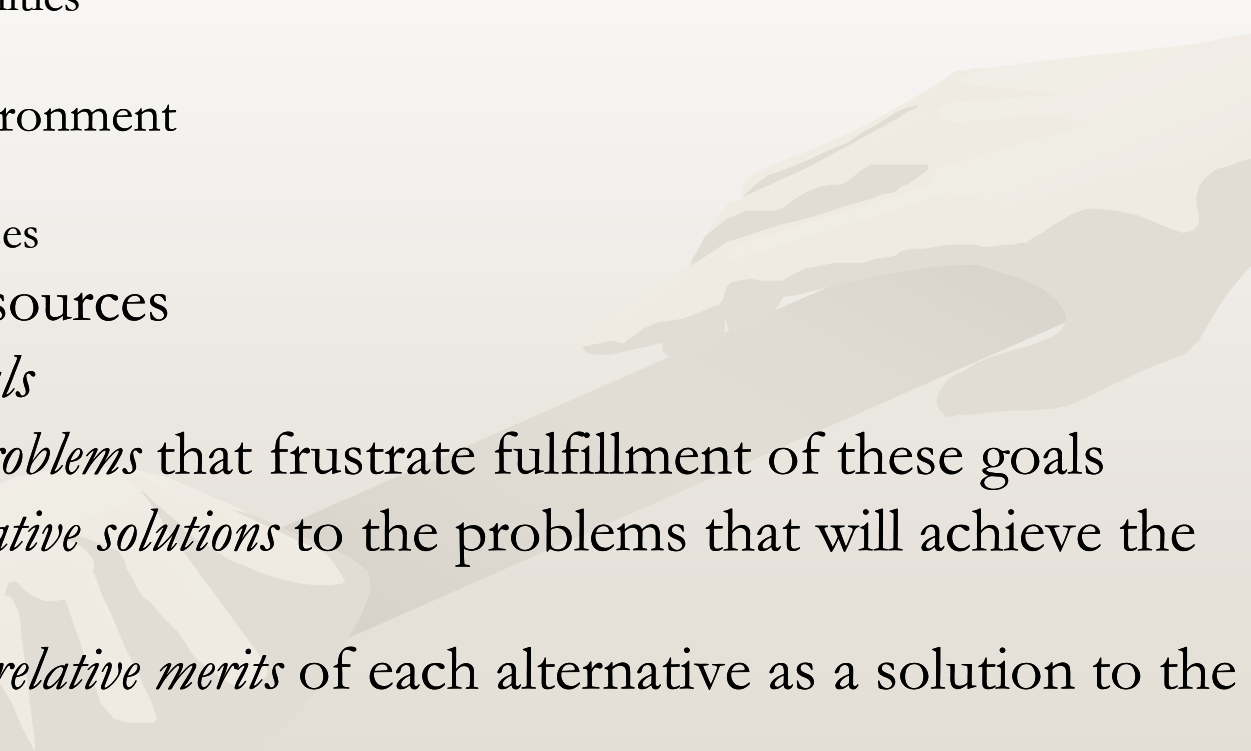
Hugo Wall School of Urban
and Public Affairs

General Economic Condition and Performance Indicators

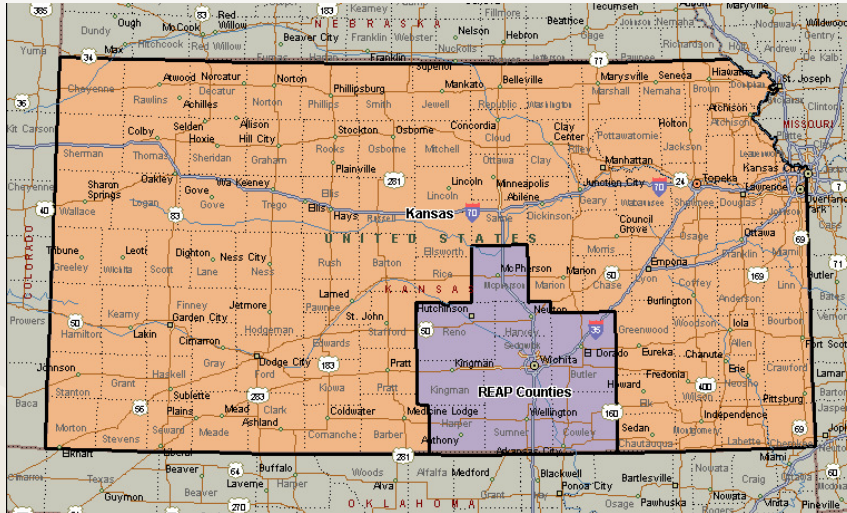
Prepared for
The Regional Economic Area Partnership (REAP)
Economic Development Committee (EDC)

by
John D. Wong, J.D. Ph.D.
February 25, 2010

Strategic Analysis

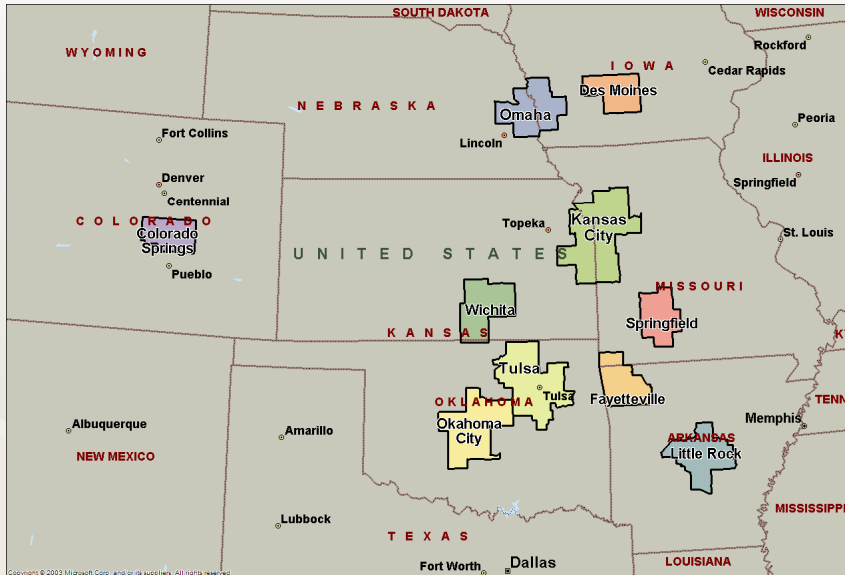
- Audit economic environment
 - External environment
 - Opportunities
 - Threats
 - Internal environment
 - Strengths
 - Weaknesses
 - Audit local resources
 - Define the *goals*
 - Identify the *problems* that frustrate fulfillment of these goals
 - Identify *alternative solutions* to the problems that will achieve the goals
 - Compare the *relative merits* of each alternative as a solution to the problem
- 

REAP Counties



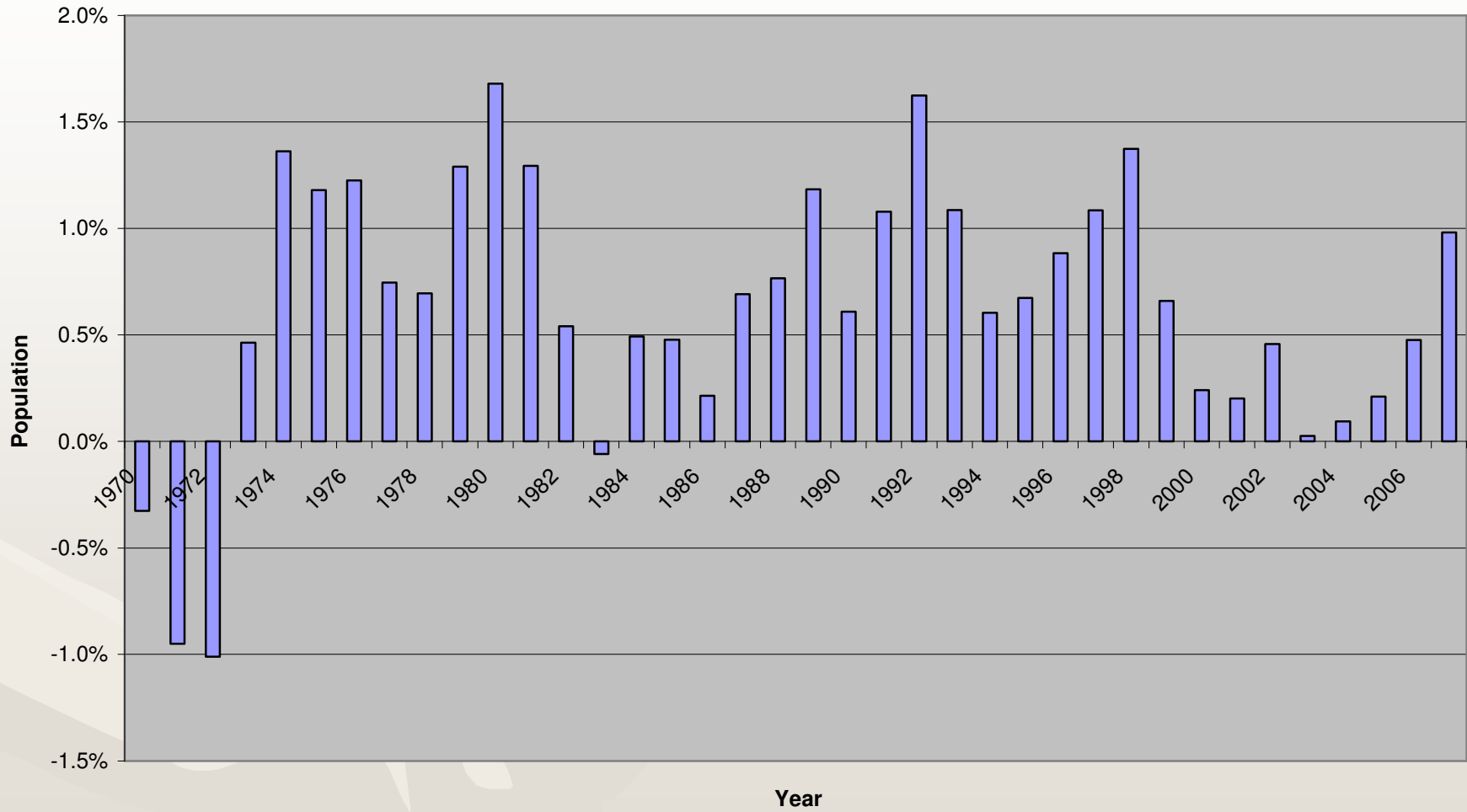
County	Population (BEA, 2007)	Percentage Change	Per Cap. Income (BEA, 2007)	Percentage Change
Butler	62,879	0.8%	\$34,739	3.8%
Cowley	34,208	0.1%	\$30,724	5.2%
Harper	5,827	-0.6%	\$29,149	3.8%
Harvey	33,471	0.5%	\$32,793	2.6%
Kingman	7,831	-1.2%	\$28,810	0.5%
McPherson	29,150	0.4%	\$34,913	1.8%
Reno	63,090	-0.3%	\$28,878	4.7%
Sedgwick	475,149	1.5%	\$39,811	3.9%
Sumner	23,822	-1.2%	\$31,594	4.3%
REAP	735,427	1.0%	\$37,035	3.9%

Peer Comparison Areas

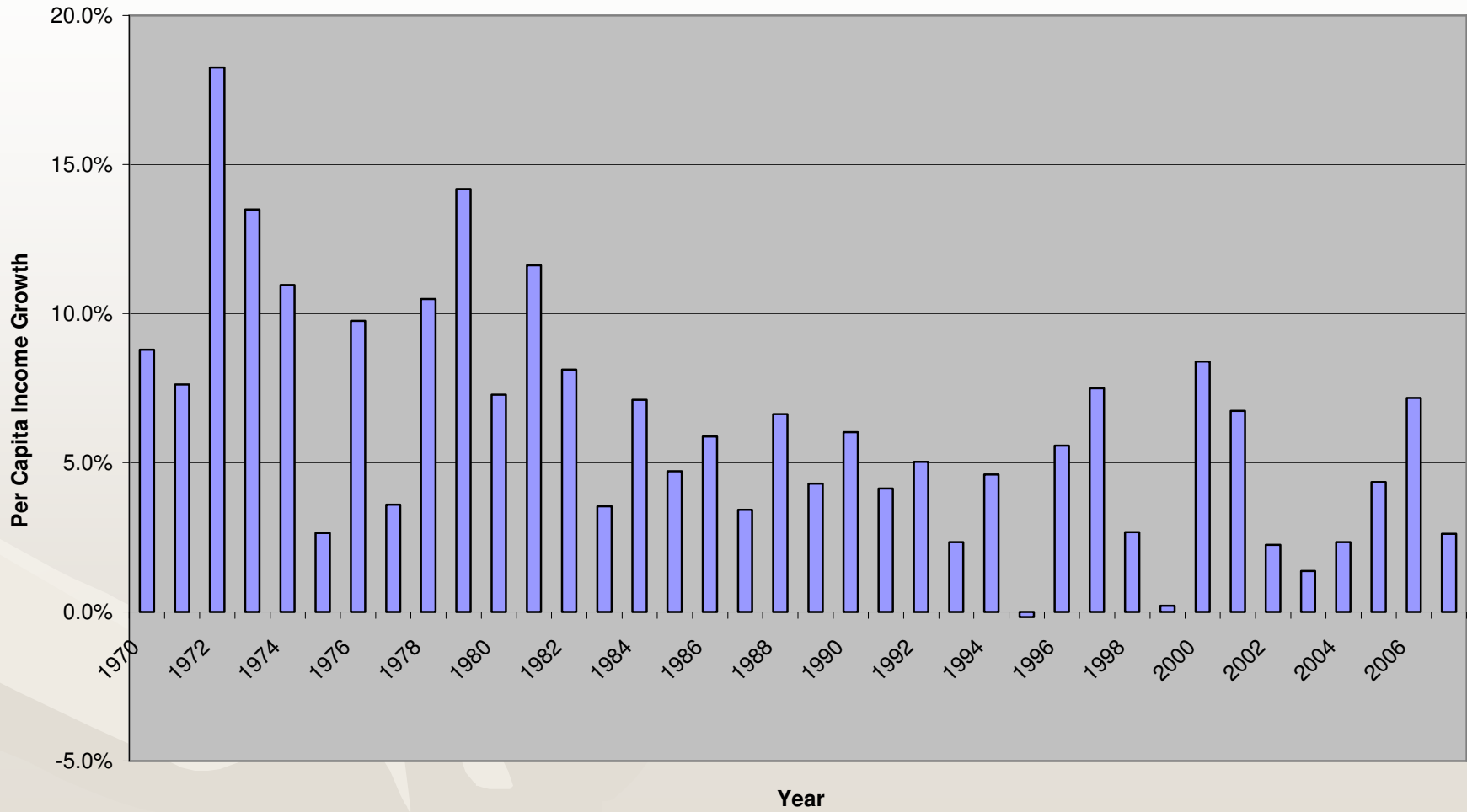


MSA	Region	Population (BEA, 2007)	Percentage Change	Per Cap. Income (BEA, 2007)	Percentage Change
Colorado Springs	Rocky Mountains	607,858	1.1%	\$35,717	3.7%
Des Moines	Plains	545,669	2.1%	\$40,923	4.5%
Fayetteville	Southeast	434,643	2.9%	\$31,586	4.7%
Kansas City	Plains	1,981,480	1.2%	\$39,222	4.4%
Little Rock	Southwest	665,657	0.0%	\$37,739	7.5%
Oklahoma City	Southwest	1,189,158	1.4%	\$38,834	5.9%
Omaha	Plains	827,666	1.0%	\$41,655	5.1%
Springfield	Plains	419,607	2.3%	\$29,416	3.5%
Tulsa	Southwest	904,435	1.5%	\$41,307	6.6%
Wichita	Plains	595,321	1.2%	\$38,552	3.9%
Peer Areas		7,576,083	1.5%	\$38,405	5.3%

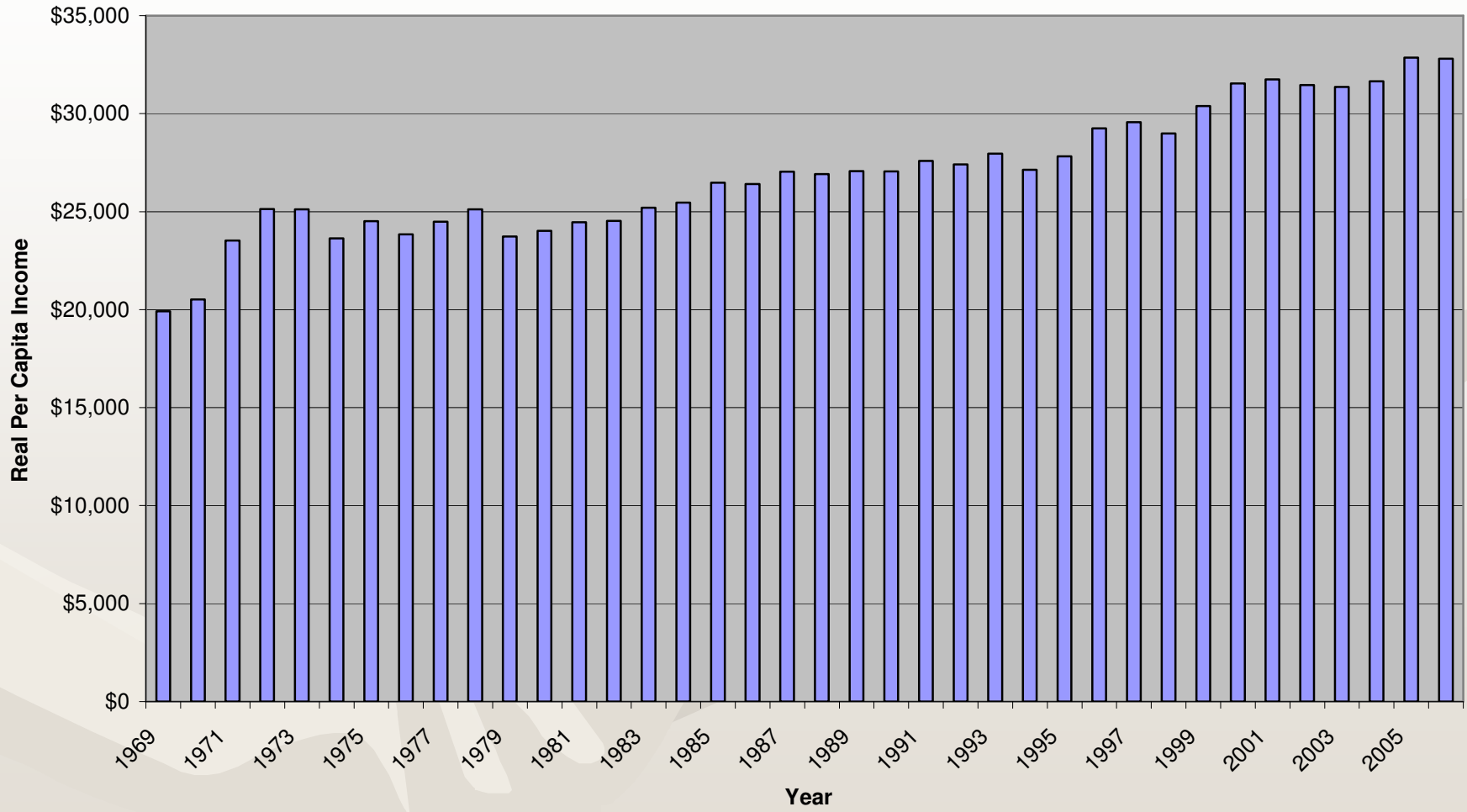
**Population Growth
Regional Economic Area Partnership (REAP)
1970-2007**



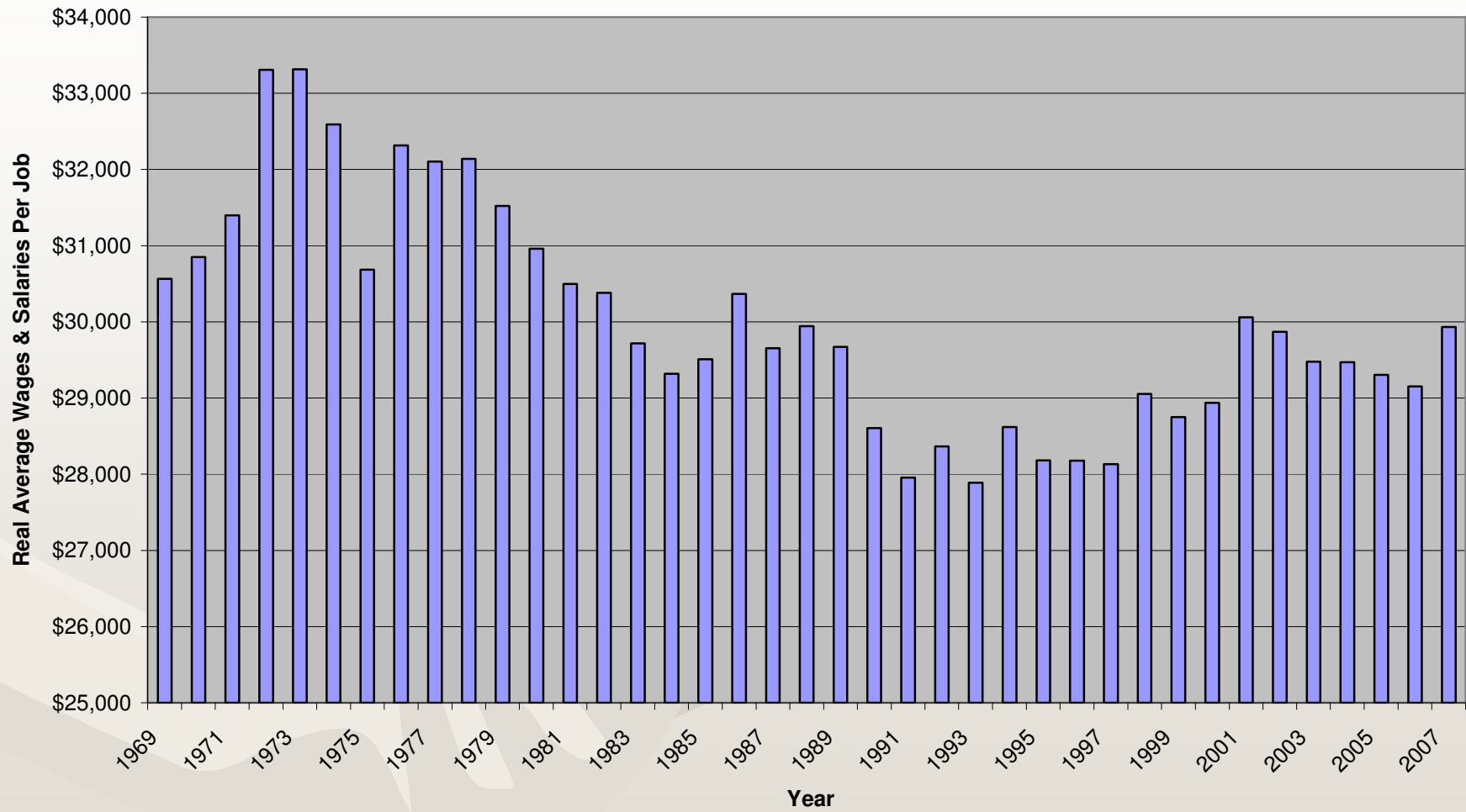
**Per Capita Income Growth
Regional Economic Area Partnership (REAP)
1970-2007**



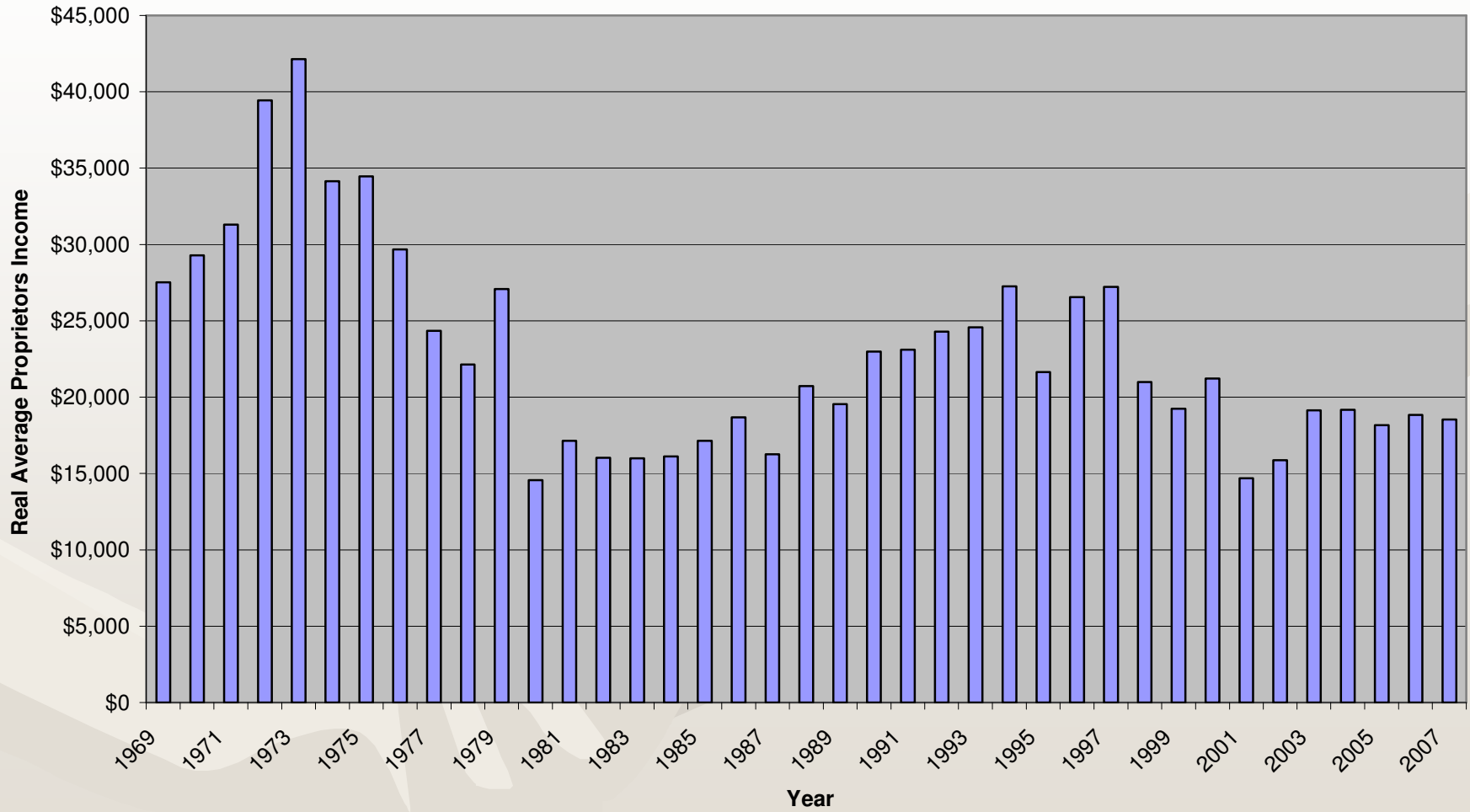
**Real Per Capita Income
Regional Economic Area Partnership (REAP)
1969-2007**



**Real Average Wages & Salaries Per Job
Regional Economic Area Partnership (REAP)
1969-2007**



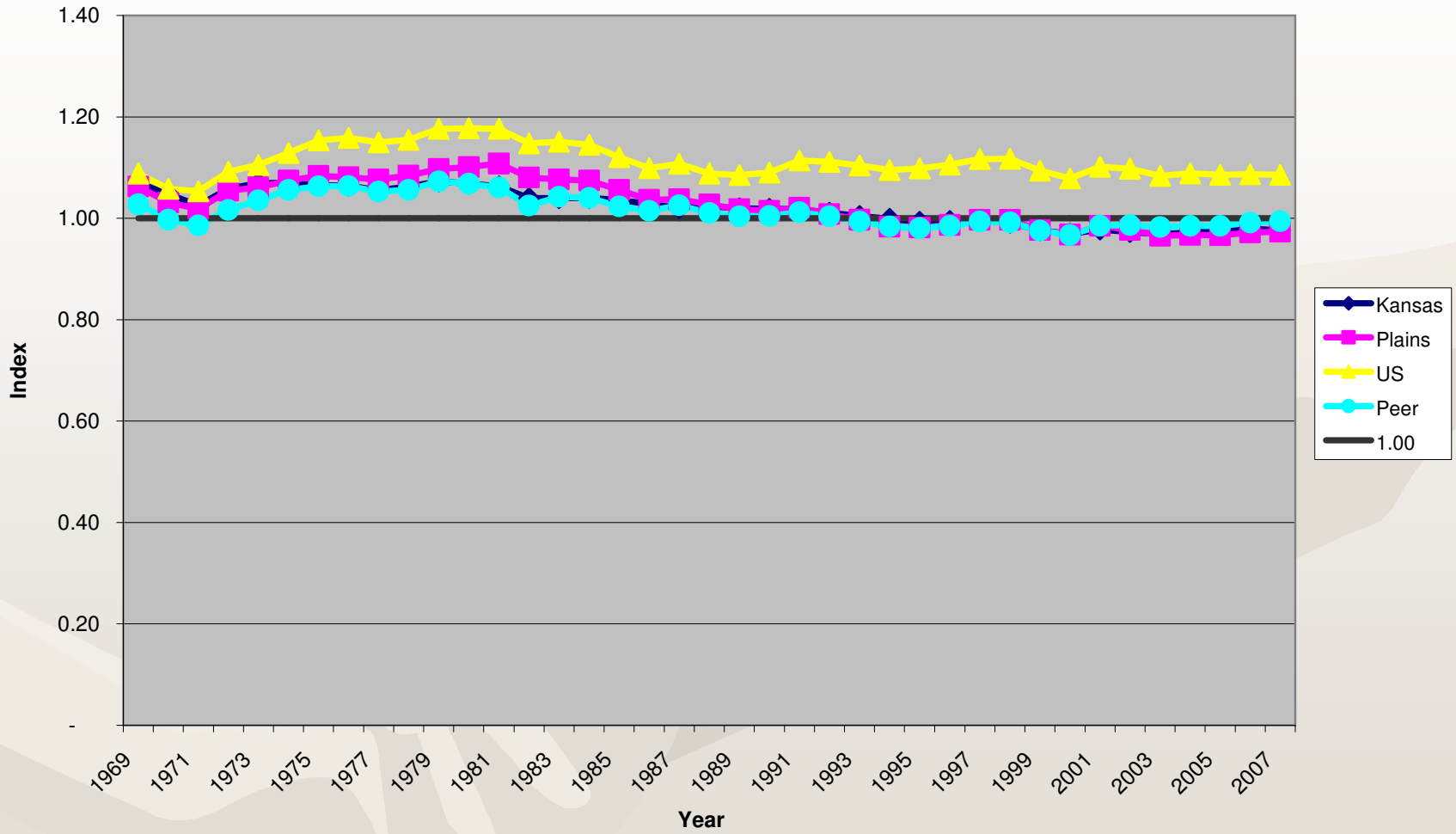
**Real Average Proprietors Income
Regional Economic Area Partnership (REAP)
1969-2007**



Employment Index

$$\text{Employment Index} = \frac{\frac{\text{Local Employment}}{\text{Local Population}}}{\frac{\text{Benchmark Employment}}{\text{Benchmark Population}}}$$

EMPLOYMENT INDEX 1969-2007

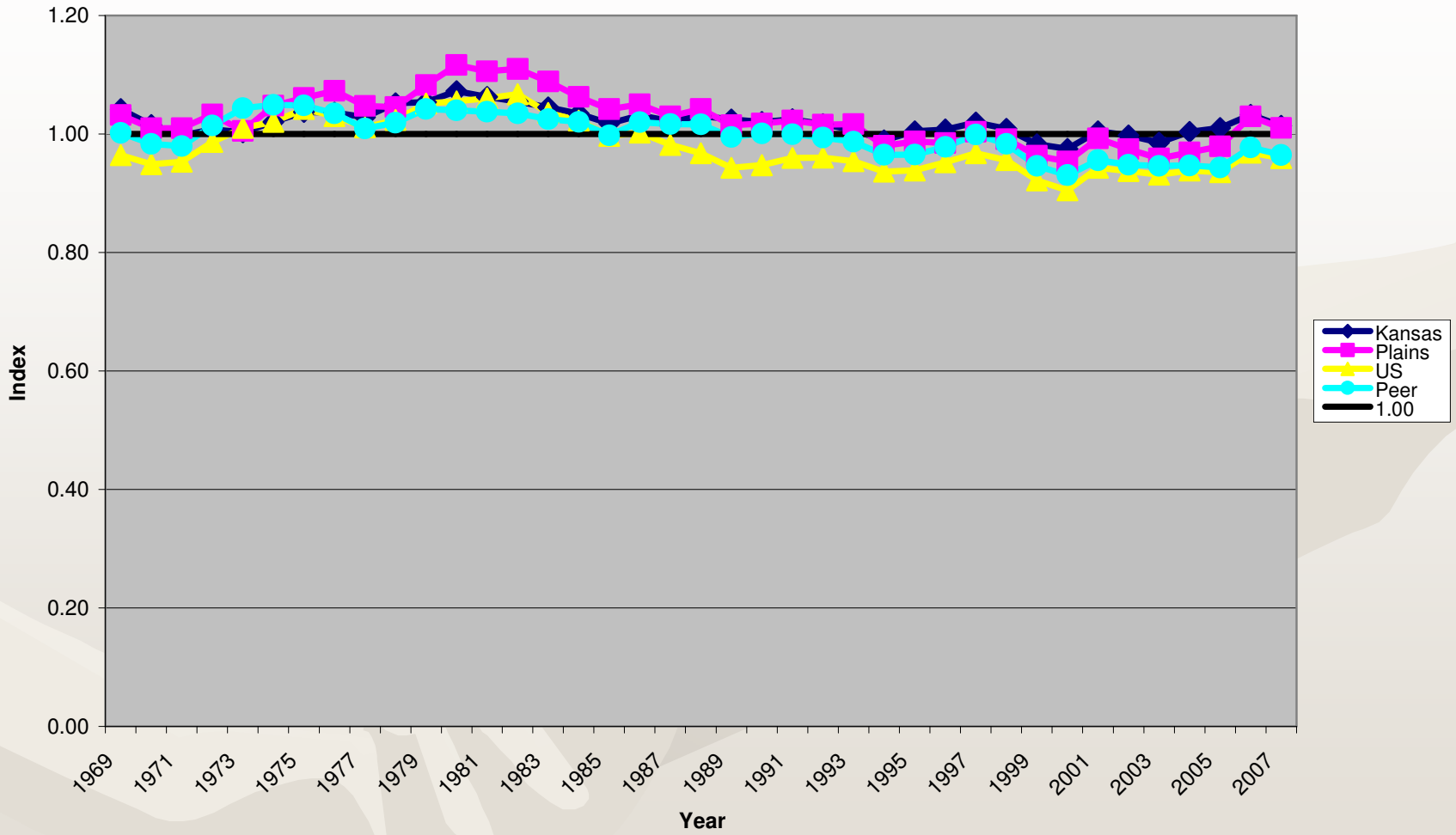


Personal Income Index



Personal Income Index =
$$\frac{\frac{\text{Local Personal Income}}{\text{Local Population}}}{\frac{\text{Benchmark Personal Income}}{\text{Benchmark Population}}}$$

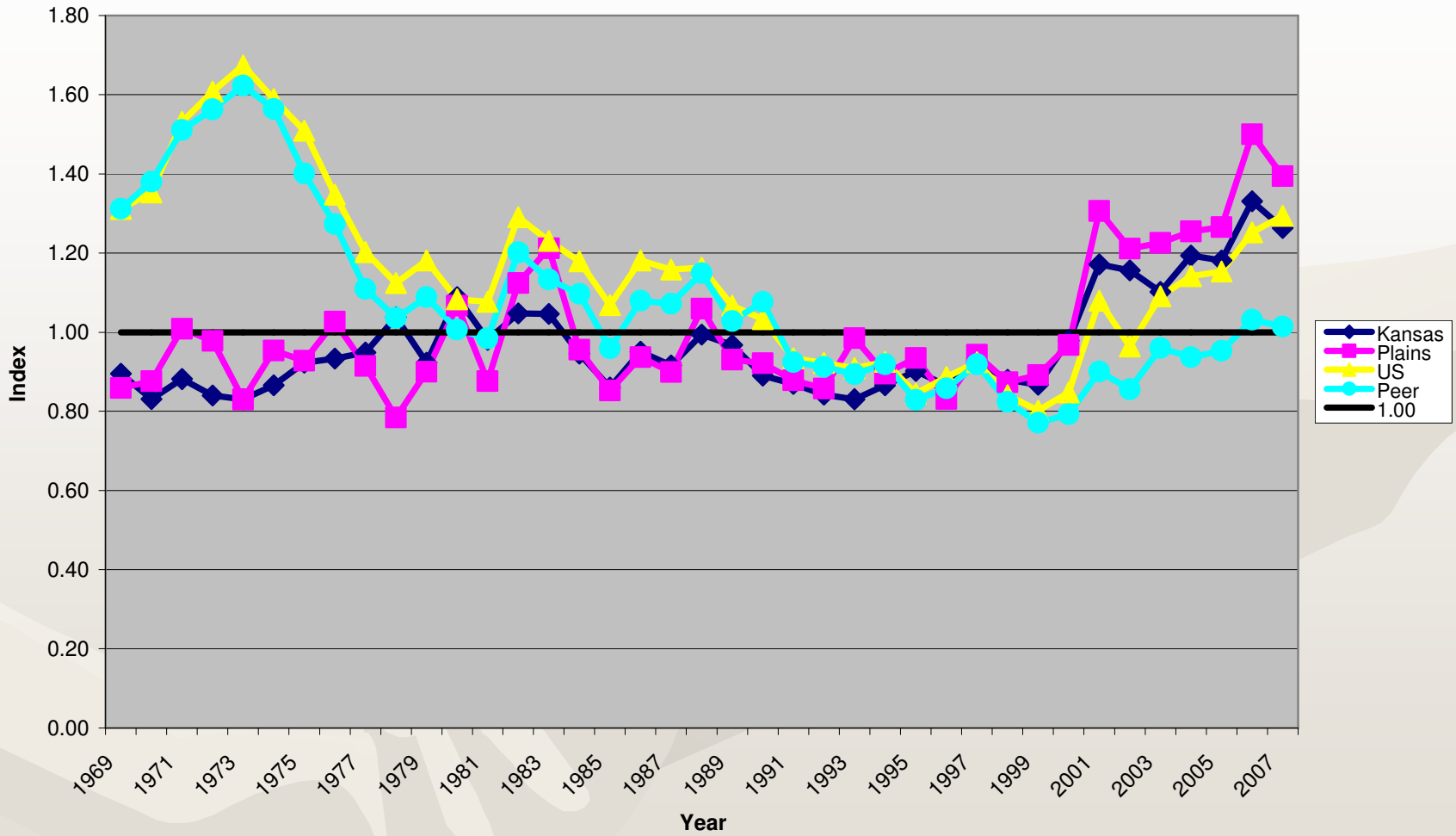
PERSONAL INCOME INDEX 1969-2007



Proprietor Income Index


$$\text{Proprietor Income Index} = \frac{\frac{\text{Local Proprietor Income}}{\text{Local Population}}}{\frac{\text{Benchmark Proprietor Income}}{\text{Benchmark Population}}}$$

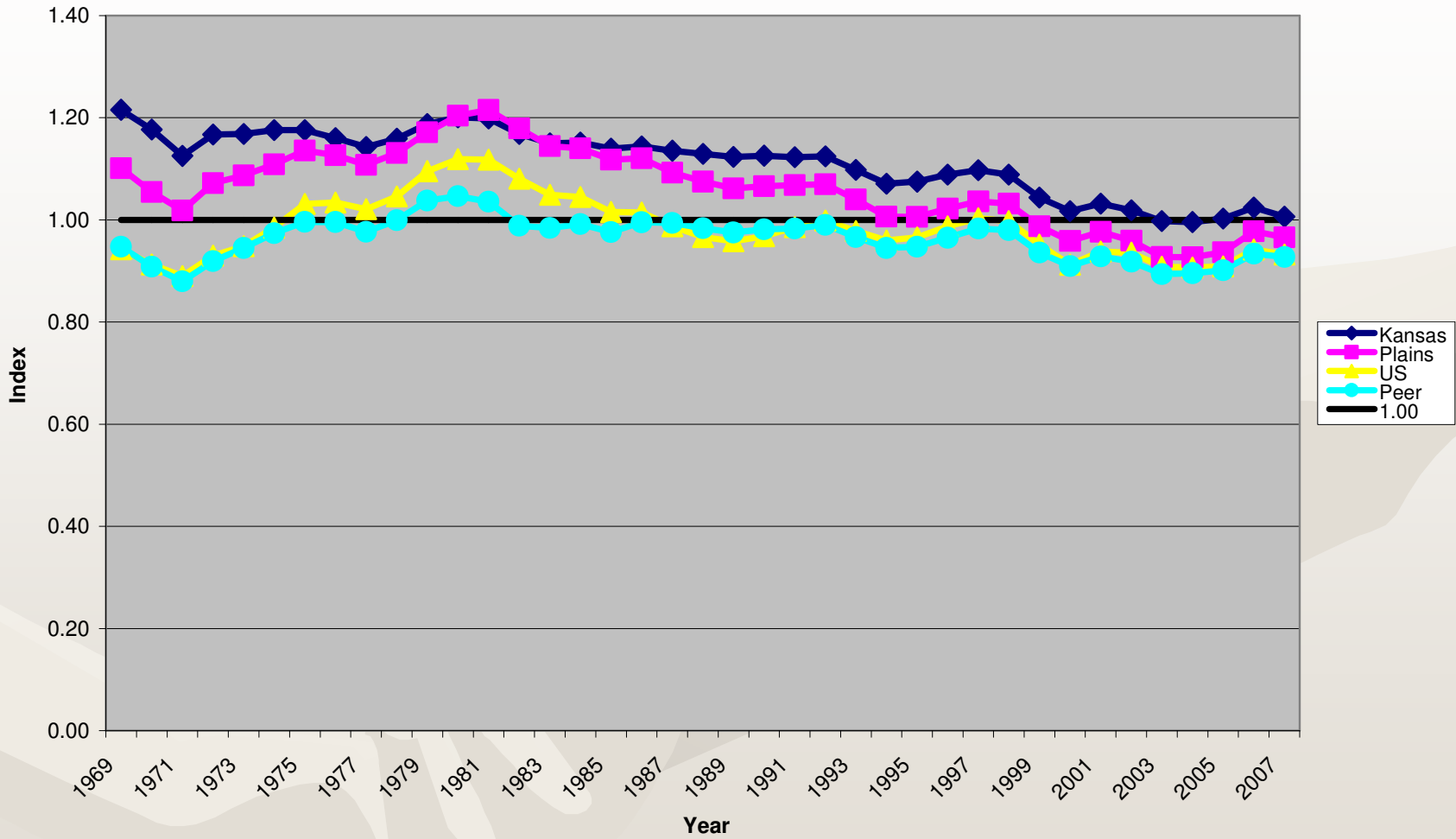
PROPRIETORS INCOME INDEX 1969-2007



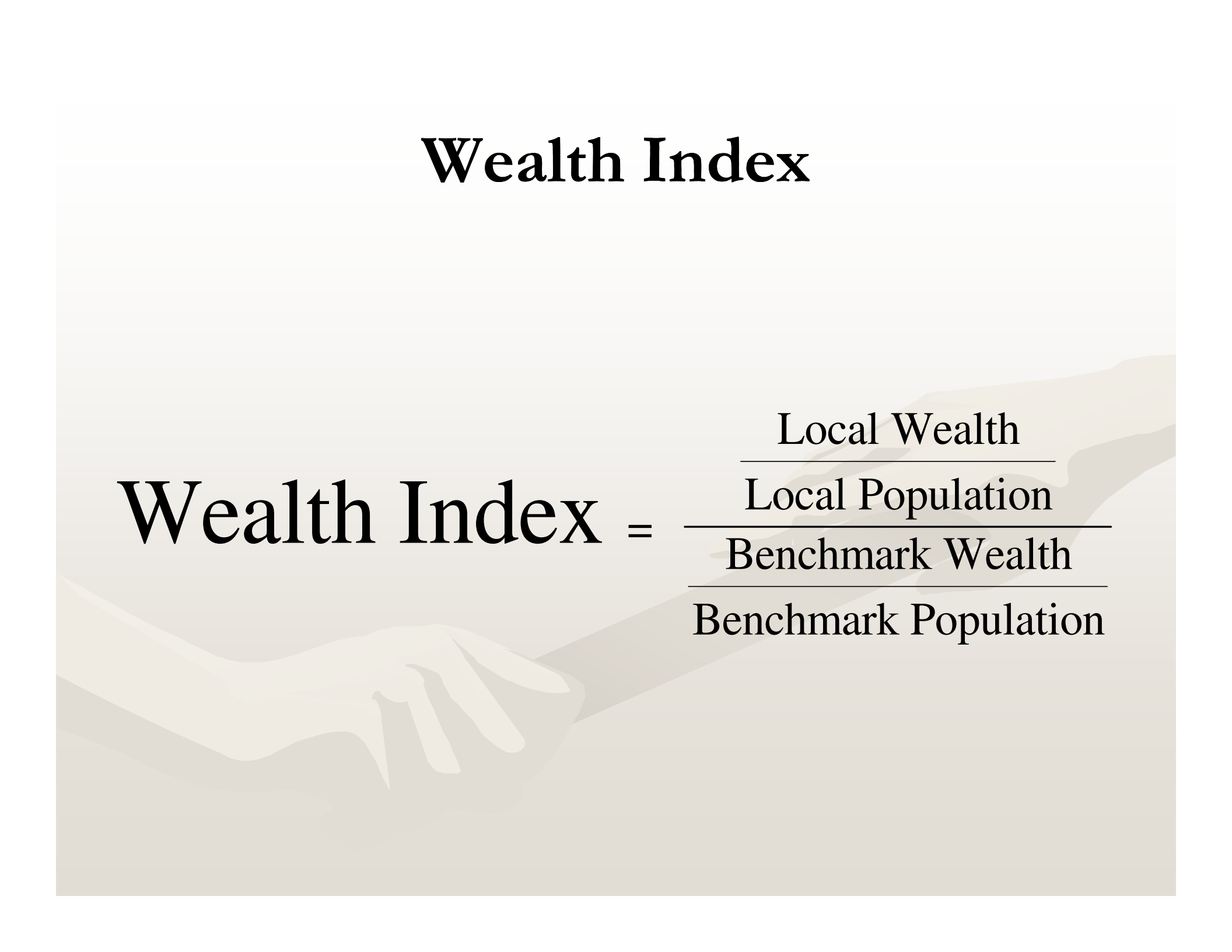
Earnings Index

$$\text{Earnings Index} = \frac{\frac{\text{Local Earnings}}{\text{Local Population}}}{\frac{\text{Benchmark Earnings}}{\text{Benchmark Population}}}$$

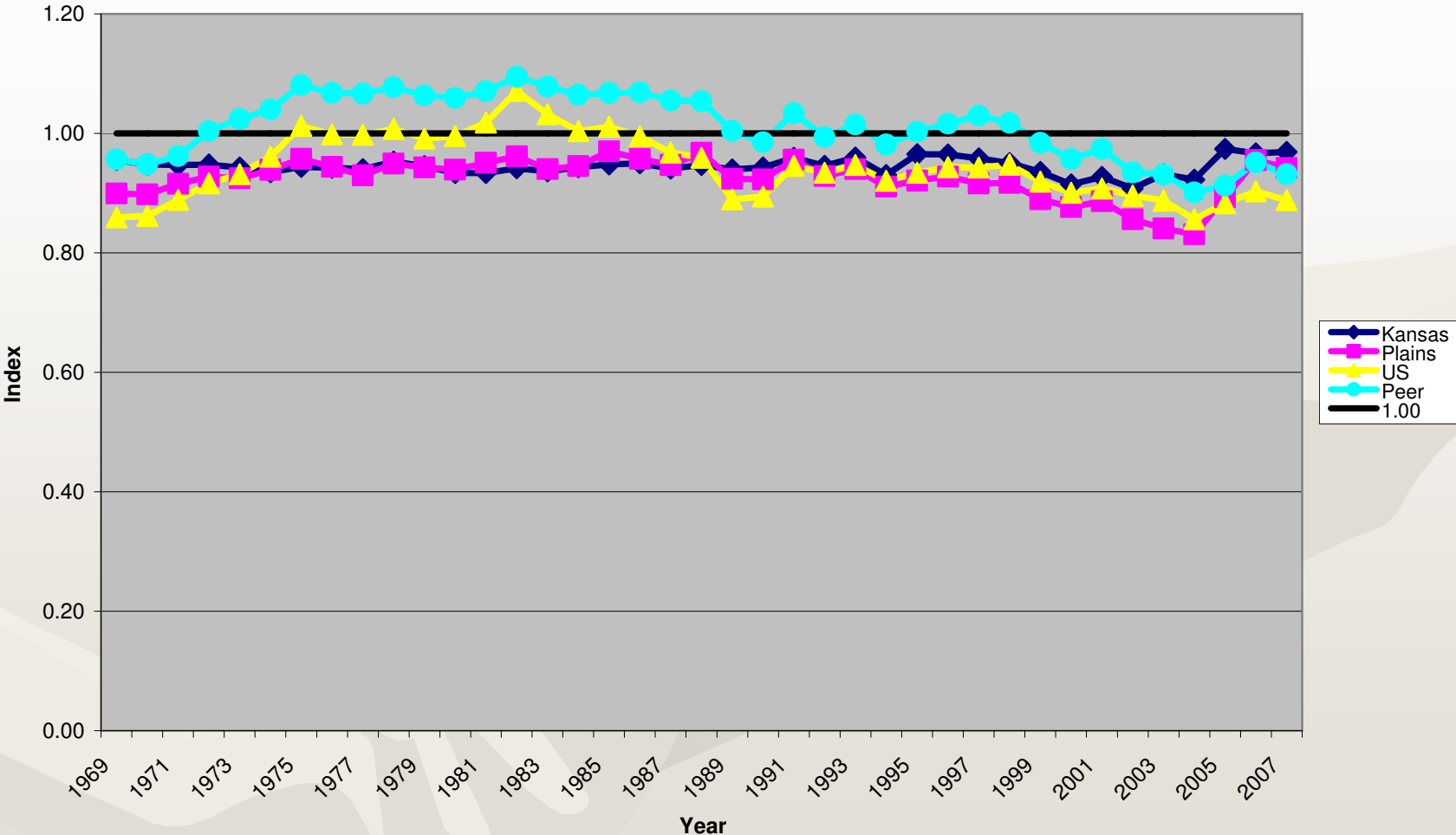
EARNED INCOME INDEX 1969-2007



Wealth Index

The background of the slide features a faint, stylized illustration of two hands shaking, symbolizing agreement or partnership. The hands are rendered in a light, semi-transparent beige color against a gradient background that transitions from light at the top to a slightly darker shade at the bottom.
$$\text{Wealth Index} = \frac{\frac{\text{Local Wealth}}{\text{Local Population}}}{\frac{\text{Benchmark Wealth}}{\text{Benchmark Population}}}$$

WEALTH INCOME INDEX 1969-2007

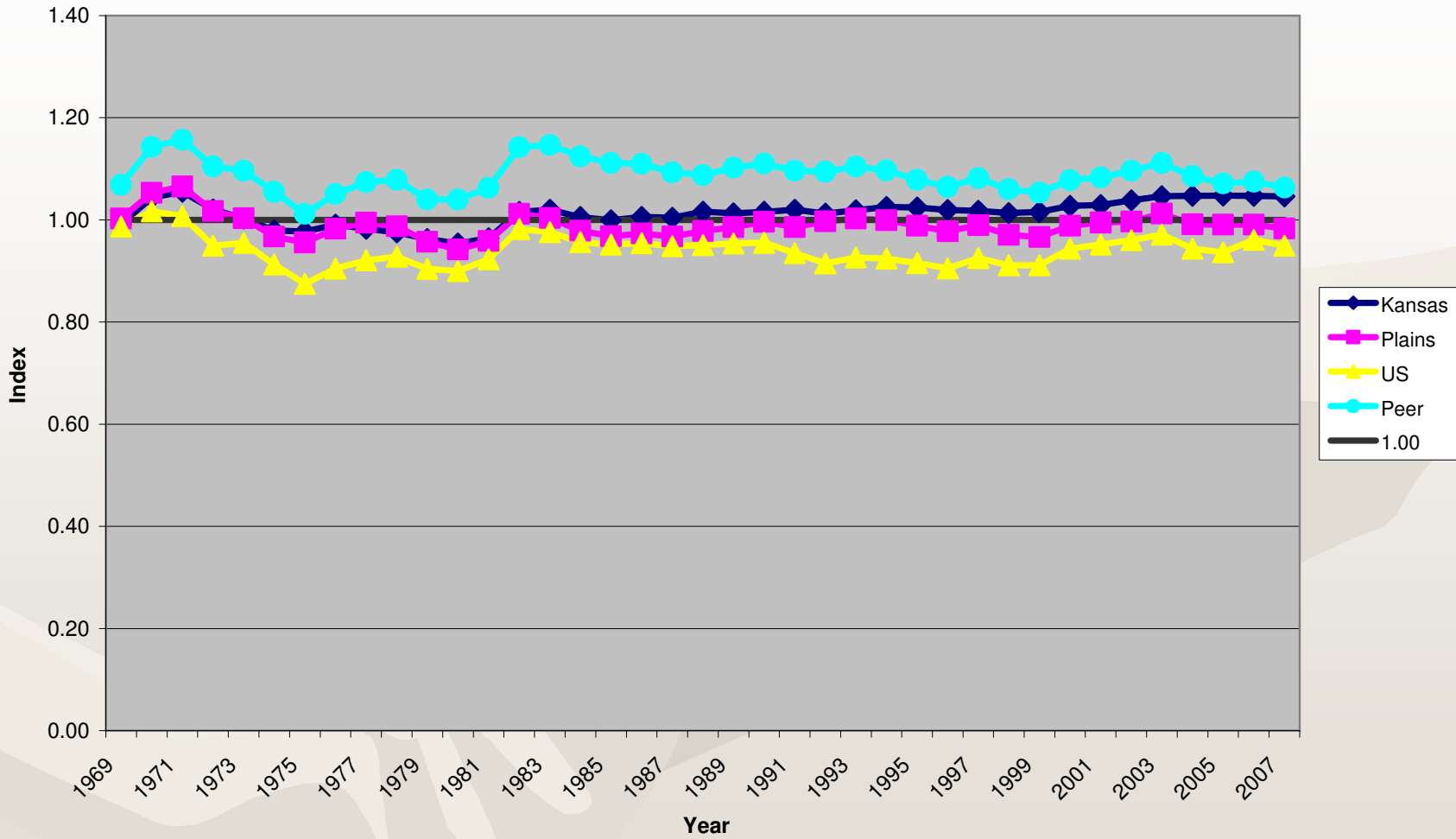


Transfer Income Index



Transfer Income Index =
$$\frac{\frac{\text{Local Transfer Income}}{\text{Local Population}}}{\frac{\text{Benchmark Transfer Income}}{\text{Benchmark Population}}}$$

TRANSFER INCOME INDEX 1969-2007

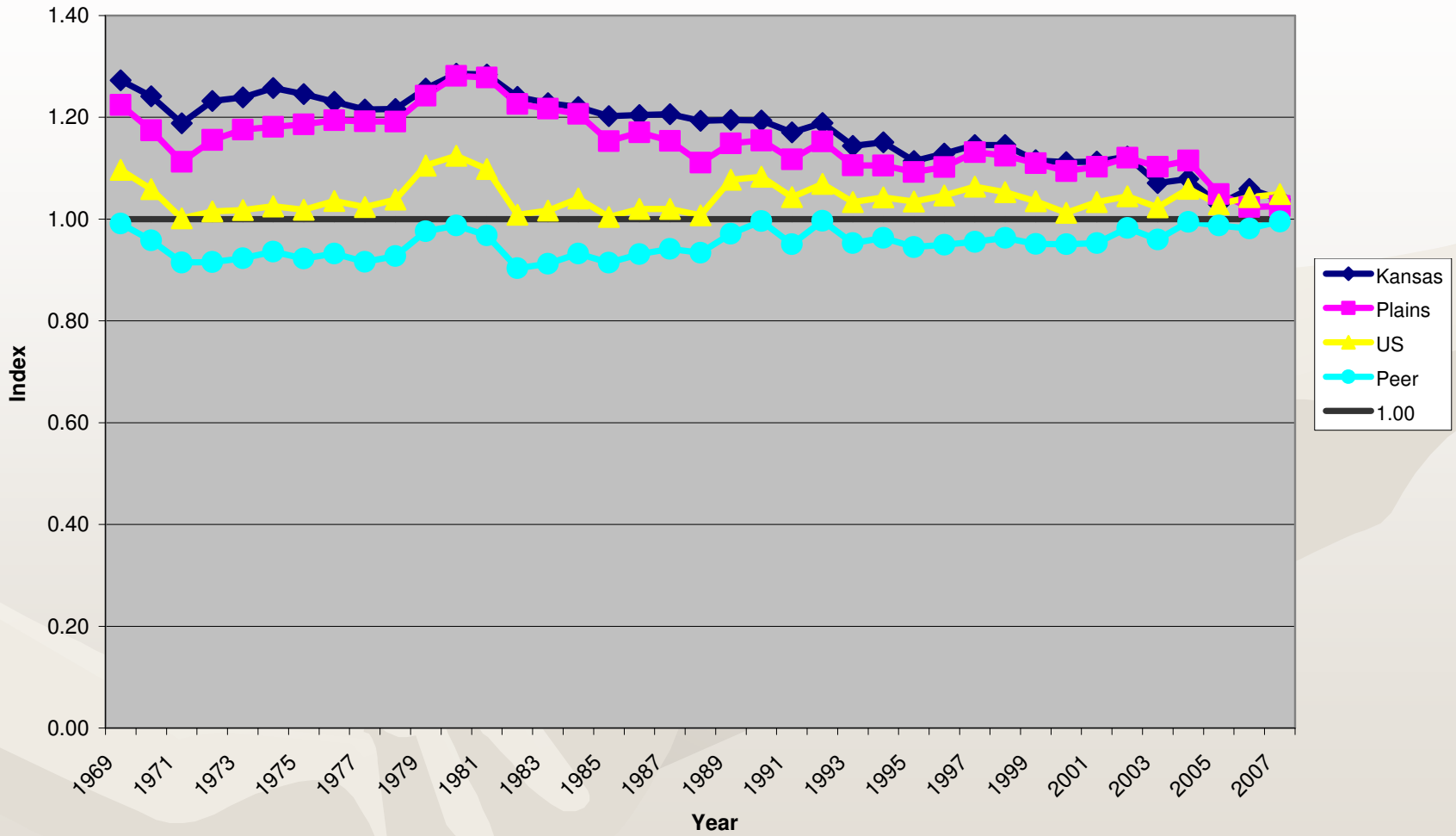


Active/Passive Income Index



Active/Passive Income Index = $\frac{\frac{\text{Local Active Income}}{\text{Local Passive Income}}}{\frac{\text{Benchmark Active Income}}{\text{Benchmark Passive Income}}}$

ACTIVE/PASSIVE RATIO 1969-2007

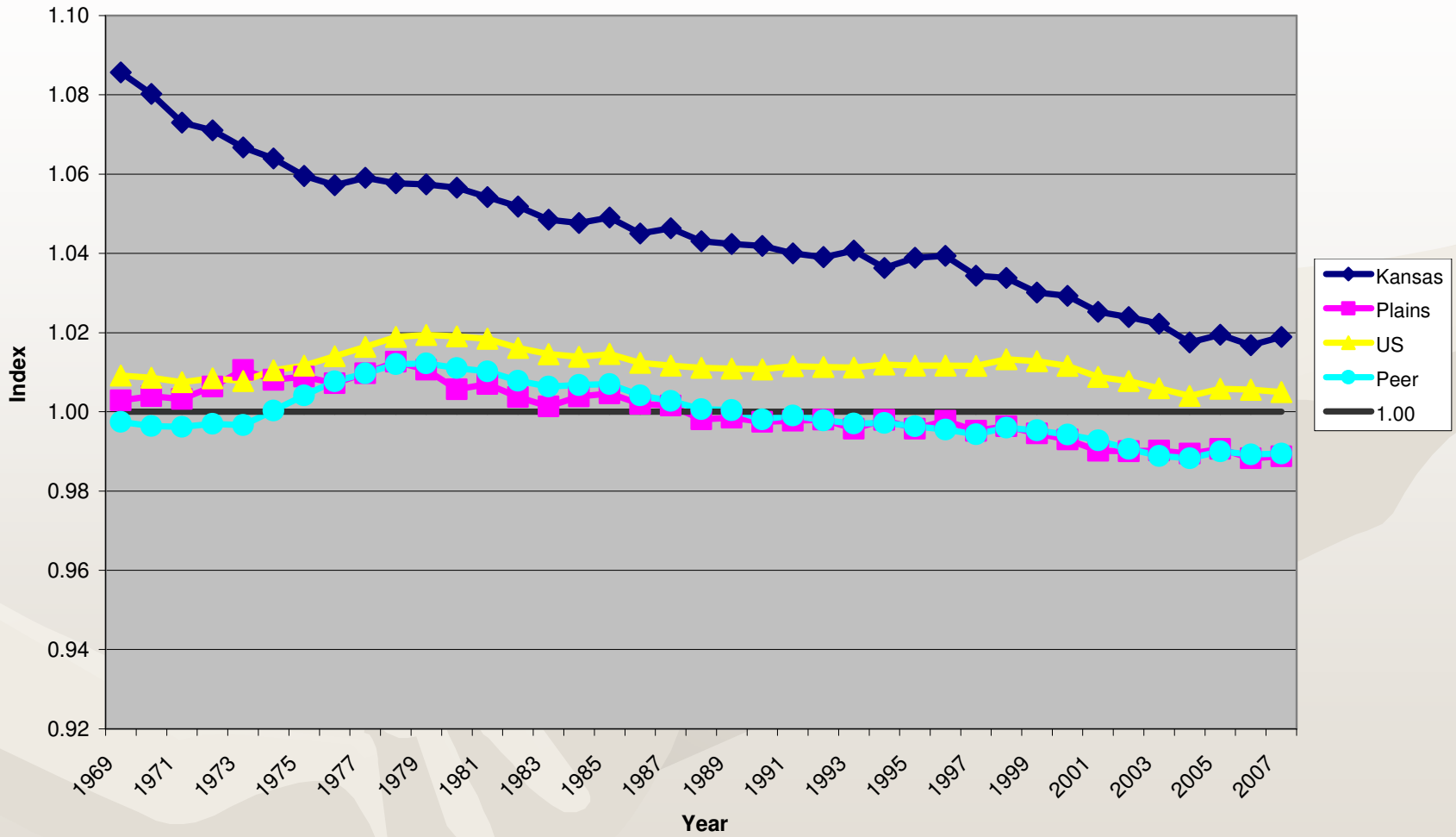


Work/Residence Income Index



Work/Residence Income Index =
$$\frac{\frac{\text{Local Place of Work Income}}{\text{Local Place of Residence Income}}}{\frac{\text{Benchmark Place of Work Income}}{\text{Benchmark Place of Residence Income}}}$$

WORK/RESIDENCE RATIO 1969-2007

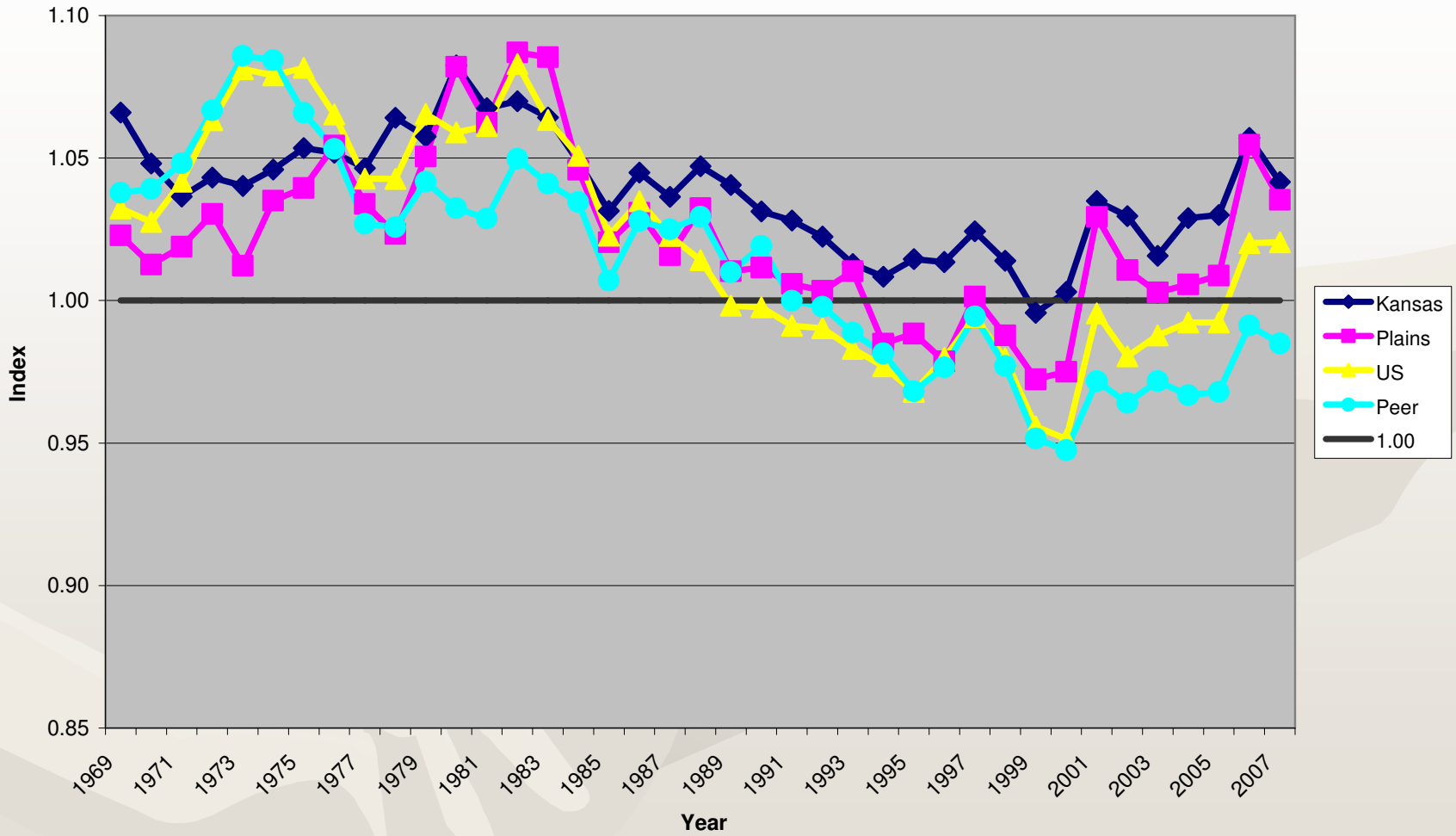


Composite Strength Index

Composite Strength Index = f (Other Indices)

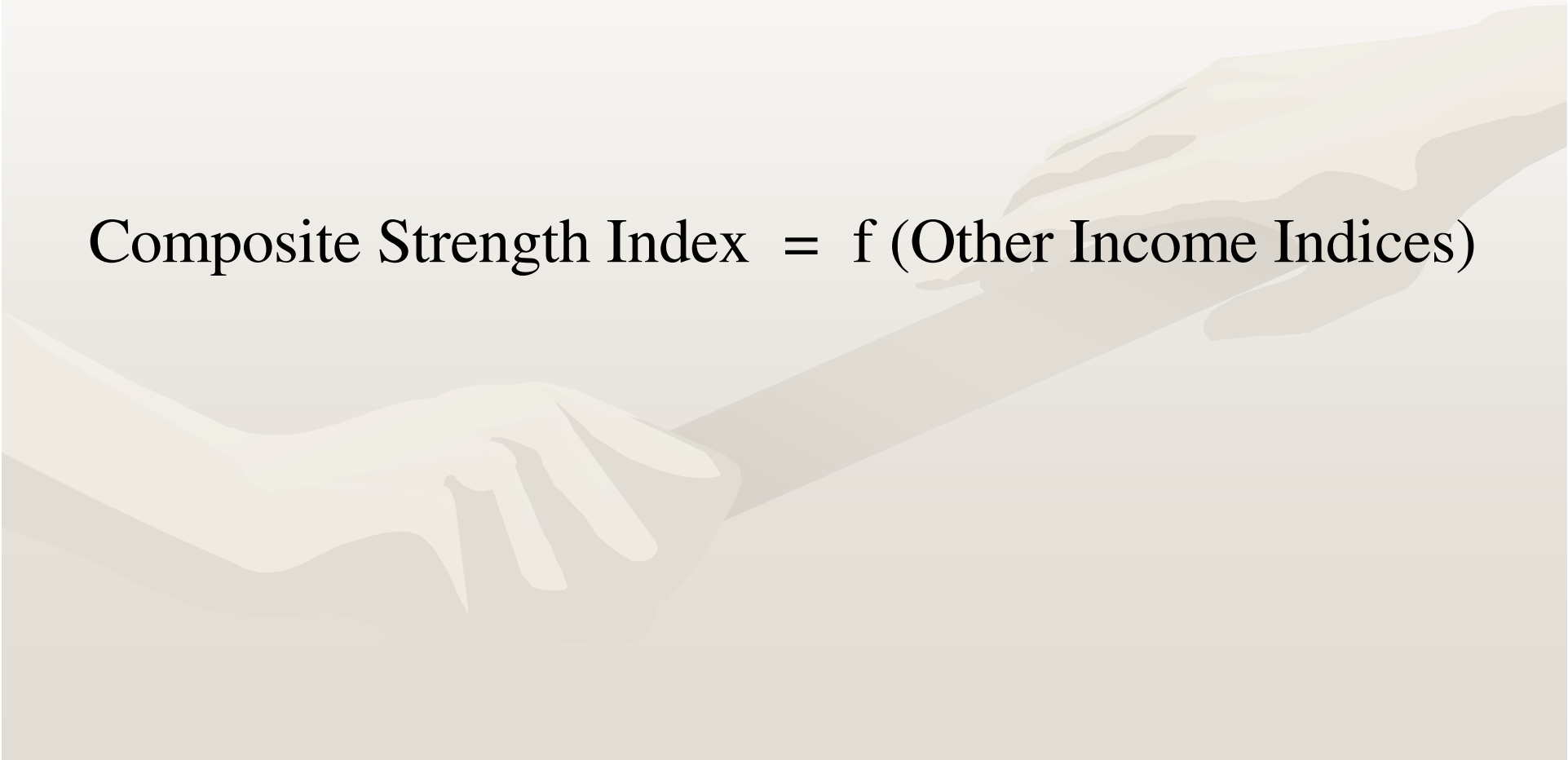
A faint, stylized illustration of two hands shaking, symbolizing agreement or partnership, is visible in the background of the slide.

COMPOSITE INDEX 1969-2007

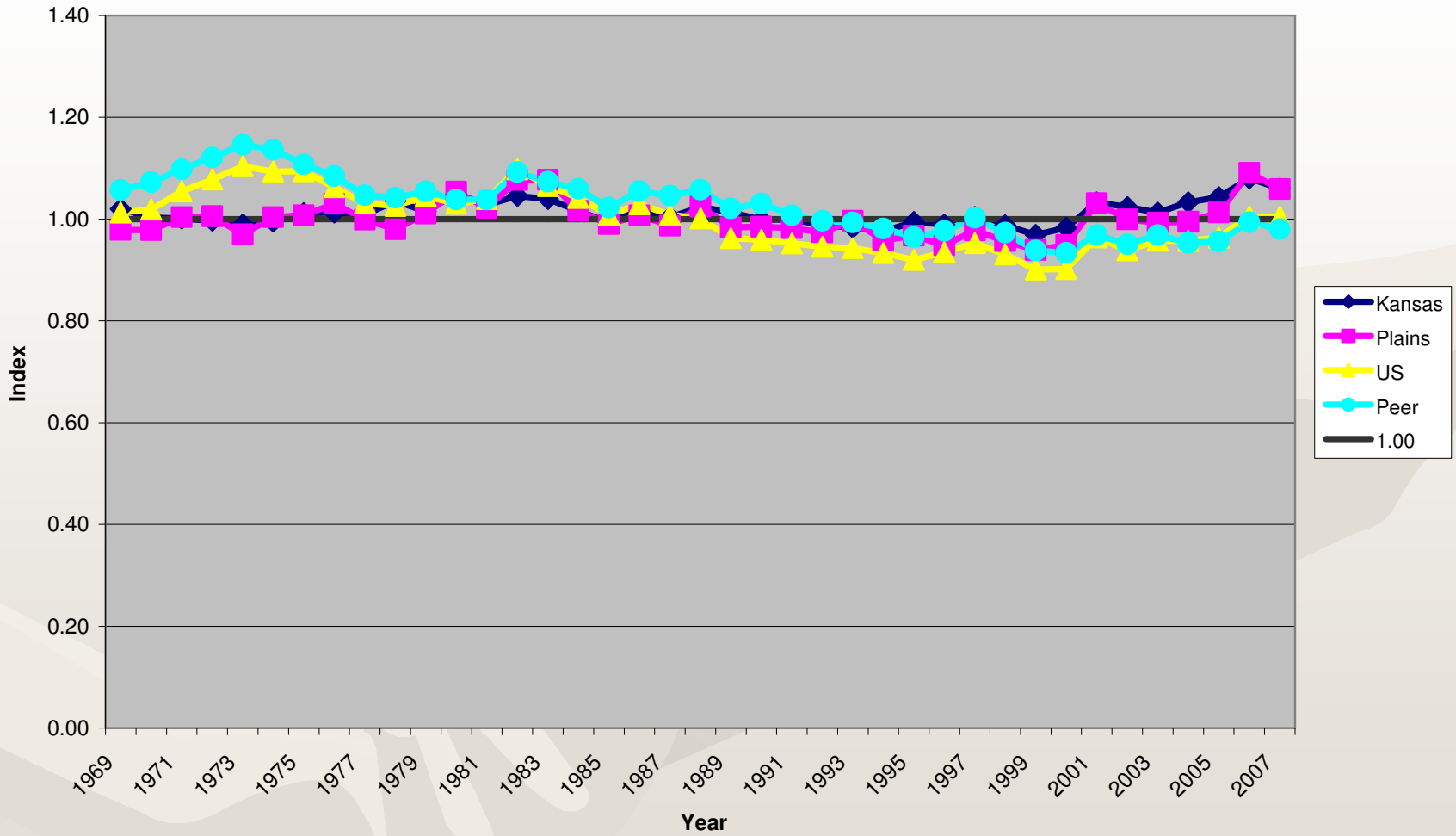


Core Composite Strength Index

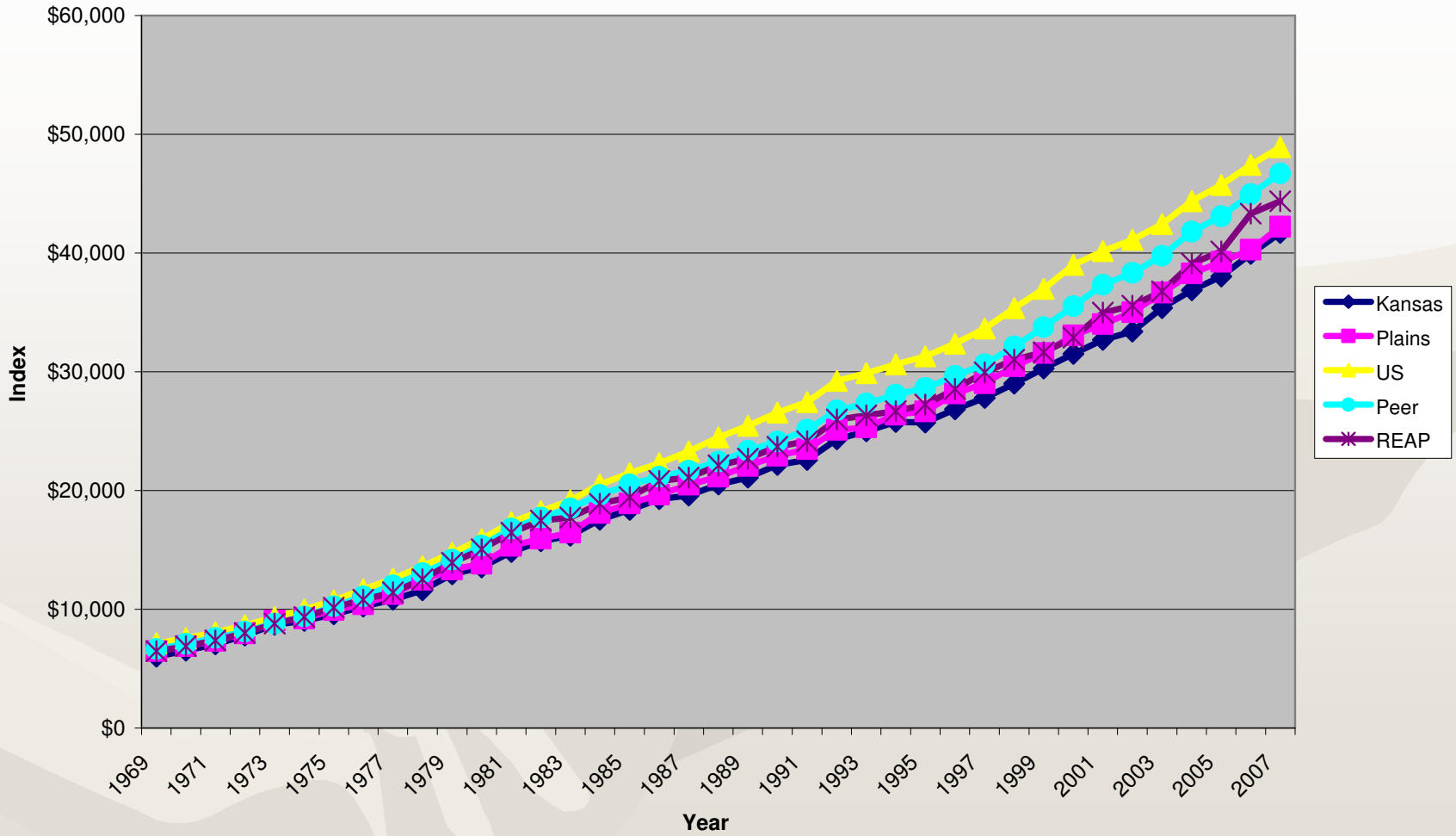
Composite Strength Index = f (Other Income Indices)

A faint, stylized illustration of two hands shaking, symbolizing agreement or partnership, serves as the background for the lower half of the slide. The hands are rendered in a light beige color with soft shadows, set against a light beige gradient background.

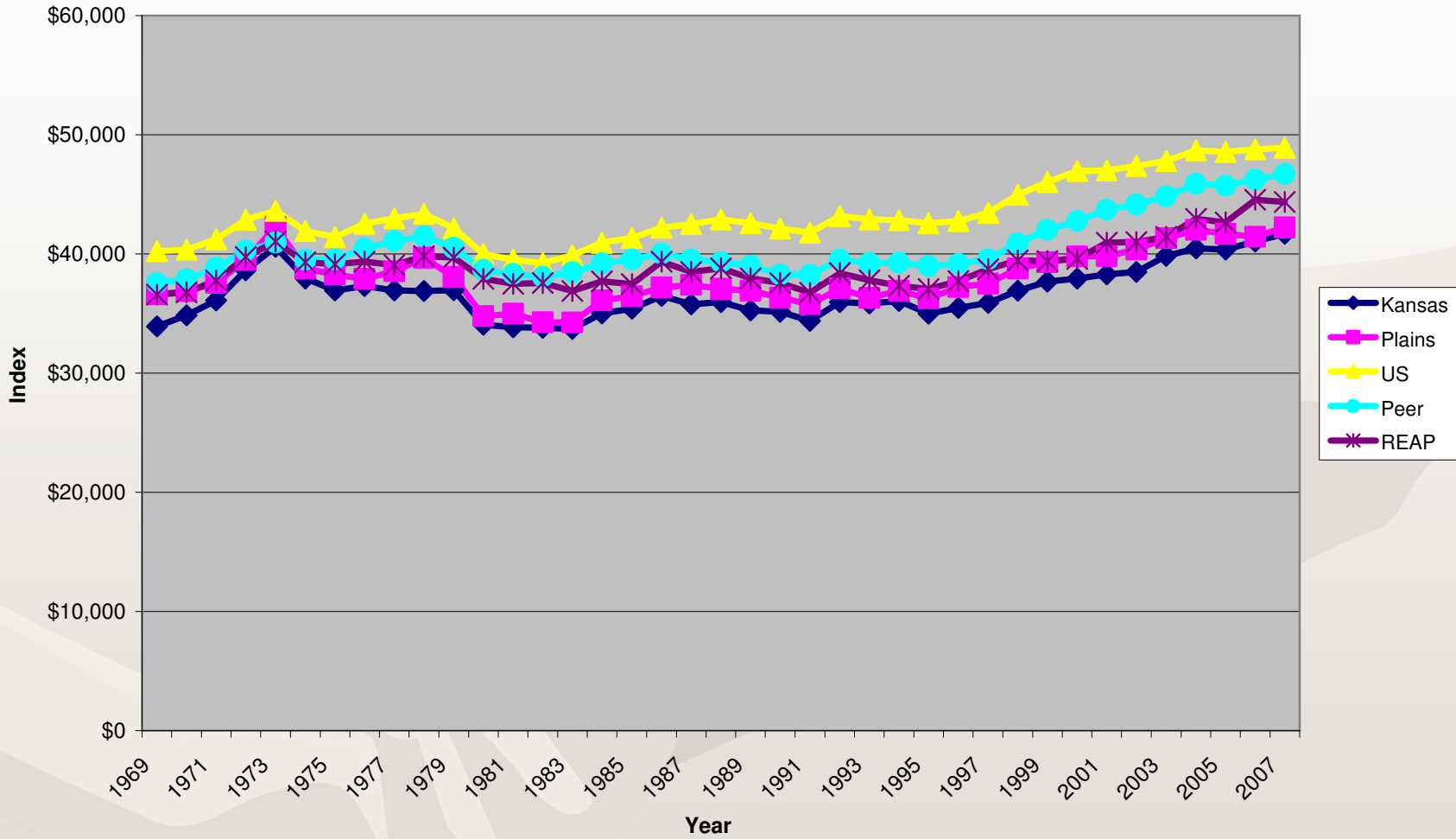
CORE COMPOSITE INDEX 1969-2007



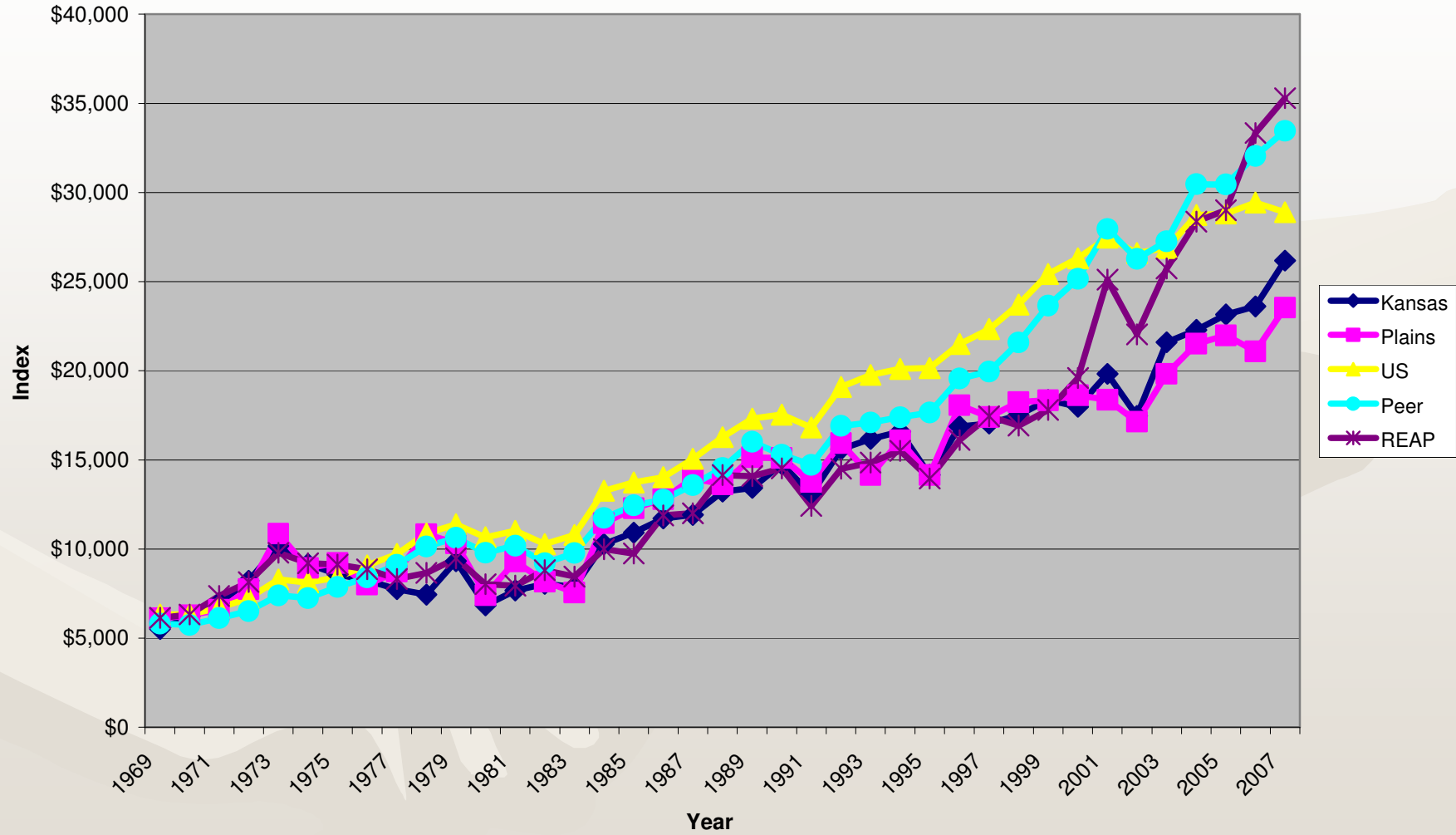
AVERAGE EARNINGS PER JOB 1969-2007



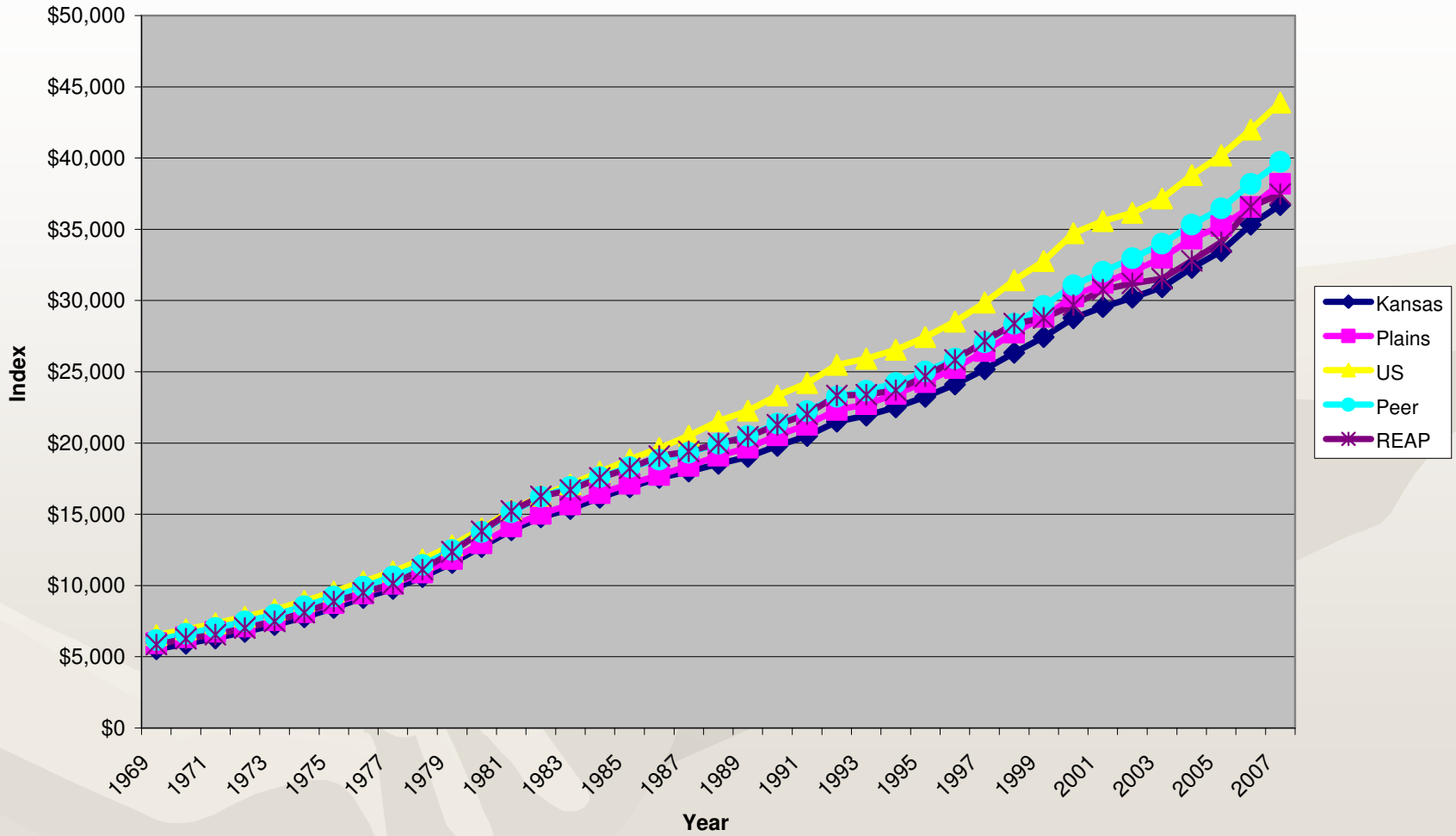
REAL AVERAGE EARNINGS PER JOB
1969-2007
2007=100



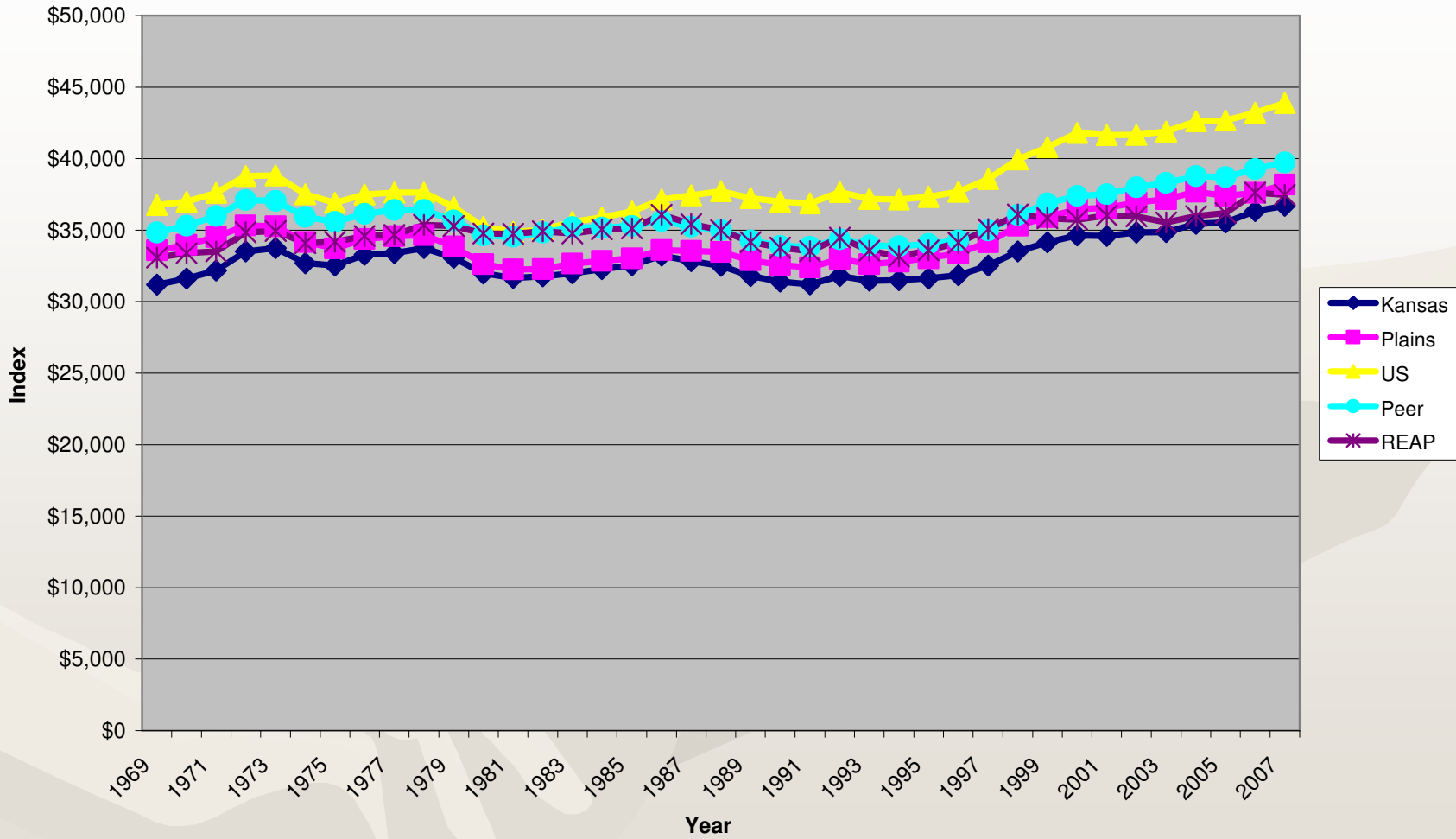
AVERAGE PROPRIETORS INCOME 1969-2007



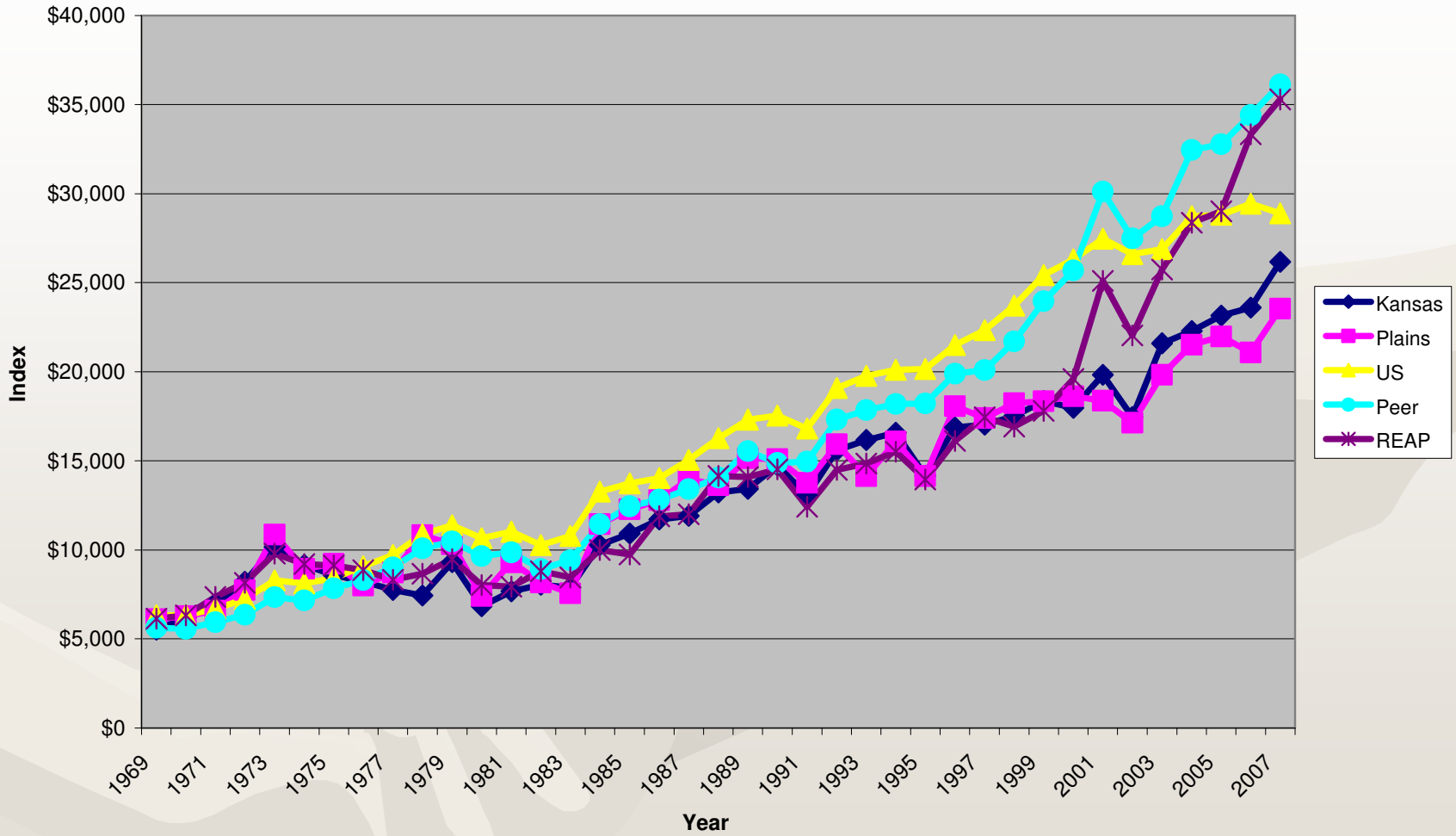
AVERAGE WAGES & SALARIES PER JOB 1969-2007



REAL AVERAGE WAGES & SALARIES PER JOB
1969-2007
2007=100



AVERAGE PROPRIETORS INCOME 1969-2007



REAL AVERAGE PROPRIETORS INCOME
1969-2007
2007=100

