

May/June
2010

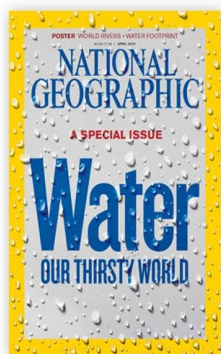


Looking Ahead

- May 11
6:00 p.m.
GMD No. 2 Meeting
Halstead
- May 13-14
KS Water Authority
iSi Environmental,
Wichita
- May 17
9:00 a.m.-12:30 p.m.
Brownfields Workshop
Curtis State Office
Building, Topeka
- May 27
REAP Regional Water
Conference
El Dorado Civic Center
- June 29
6:30 p.m.
Walnut BAC
El Dorado Country Club
- June 30
9:00 a.m.
Lower Arkansas BAC
Wichita Water Center

Kansas Featured in National Geographic Special Issue

The April 2010 special issue of National Geographic Magazine, "Water: Our Thirsty World," focuses on various water problems around the globe and includes information on the Ogallala aquifer in Haskell County, Kansas. A cutaway view of the Ogallala



illustrates the large number of wells installed (more than 1,000) and the substantial drop in groundwater levels (more than 100 feet) from 1950 to 2007. The online edition of the magazine features

animation of the addition of wells and the associated drop in the water table over time. The issue also features a photograph of the Flint Hills during an intense rain storm. Parts of the special issue are accessible online at <http://www.nationalgeographic.com>

New Environmental Finance Center at Wichita State

Wichita State University was recently awarded a grant from the Environmental Protection Agency to house an Environmental Finance Center (EFC) to serve EPA Region 7. The EFC at WSU will



work to facilitate the sharing of information, technology and resources offered by a network of collaborators to help communities of all sizes answer the "how-to-pay" question when it comes to addressing environmental challenges. As part of the larger network of 10 university-based EFCs across the country, WSU will provide environmental finance expertise and outreach in a variety of areas including water resources and infrastructure. Angela Buzard has been asked to be the Director of the EFC and will transition out of her current position with the REAP WRC this summer. Updates on EFC activities will soon be online at <http://hws.wichita.edu/EFC/>

Kansas in the Middle of the Pack for Drinking Water Pollution

In March, EPA Administrator Lisa Jackson imposed stricter limits on four cancer causing chemicals found in water and unveiled a new strategy for taking on other water contaminants. Evaluation and regulation of chemicals will now be done by groups instead of one by one; a strategy which is expected to make it easier to add new substances to those controlled under the Safe Drinking Water Act. According to data from the EPA, 12% of community water systems in Kansas



have reported health violations and 7% of the state's population is served by contaminated water systems. Among the states that border Kansas, Nebraska has the highest number of community water systems with health violations, at 21%, and Colorado has the lowest at 11%. Read more at www.mnn.com

Plan for Conservation Modified in Senate Bill 316

Earlier this legislative session, Secretary of Agriculture Josh Svaty proposed Senate Bill 510 which would have established conservation as a beneficial use of a water right. Proponents of the bill believed those water right holders who were diverting water from rivers and streams to comply with the “use it or lose it” policy, would no longer be forced to do so for fear of losing their rights. Under the bill, the designation of water rights as a conservation use would be on a

voluntary basis. Following its introduction, SB 510 faced opposition from organizations such as the Kansas Farm Bureau, which instead, expressed an interest in limiting implementation to the western 1/3 of the state or alternatively, sections of Kansas closed to new water appropriation. Other opponents of SB 510 were concerned the bill

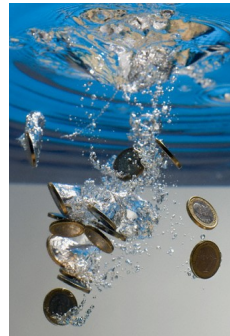


would result in water hoarding by municipalities, corporate entities or individuals. As a result, SB 316 was introduced and eventually signed by the governor in early April. SB 316 allows producers in areas closed to new appropriations to not pump water on a year-by-year basis as long as diversion equipment remains in operation. More on SB 316 and a reaction from Secretary Svaty is available online at http://cjonline.com/news/legislature/2010-04-10/kansas_water_policys_drift

Register now for the REAP Regional Water Conference – May 27 in El Dorado

The 3rd annual REAP Regional Water Conference, “Funding a New Era of Water Service”, has been set for May 27 at the El Dorado Civic Center. The keynote presentation, “Urbanization in the United States: Analyzing Water Quality Impacts and Financial Implications”, will be delivered by Donna Myers, Chief of the USGS National Water Quality Assessment

Program. Session topics will focus on best practices for funding water services, water and economic development, water management and current legislative issues. An optional tour of



the innovative El Dorado Wetlands & Water Reclamation facility will be open to interested attendees following conference sessions. The event is open to participants from all areas interested in water issues. Register online at <http://events.constantcontact.com/register/event?oeidk=a07e2tb9k0u67401fd0>

Playa Conference and Annual KAWS Meeting June 15–16 in Garden City

The Kansas Alliance for Wetland and Streams will hold its 14th annual meeting and conference June 15–16 in Garden City. The conference will feature sessions on Playa formation, ecology,



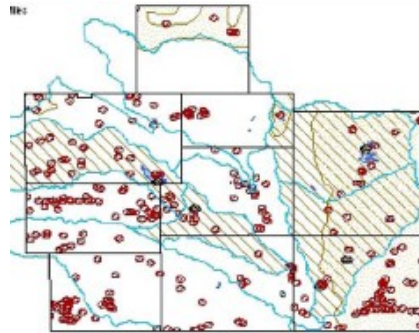
management, restoration and roundtables to discuss existing playas in Kansas. Speakers include representatives from KAWS, NRCS, US FWS, KDWP and the University of Kansas. All KAWS chapter members, partners and friends are invited to attend the conference at the Lee Richardson Zoo. Both days will conclude with a forum for discussion related to the day’s presentations

and events. Registration for the Playa Conference, which includes lunch is \$30 and registration for the annual meeting and lunch on the 16th is \$20. For additional information and registration details, visit <http://www.kaws.org/files/kaws/KAWS%20Playa%20-%20Annual%20Meeting%202010.pdf>

Natural Resources Inventory of the REAP Region Available Soon

Given the potential for continued growth and the need for responsible land use planning within south-central Kansas, the WRC has partnered with the Kansas Biological Survey and the Kansas Water Office to develop a Natural Resources Inventory (NRI). The NRI will provide a valuable informational foundation for land use and development decisions in the region by allowing users to overlay data sets of information related to the natural resources in the region to have a better understanding of the impacts of land use

decisions. The on-line tool will allow users for any location to pick an area of interest, overlay data sets of their choosing to fit the needs of a given project. Some of the layers available include Public Water Supply (PWS) facilities, PWS



A representation of multiple data layers on a map of the REAP region

source points, wells, stream flow stations, confinement ponds, dry and abandoned oil and gas wells, floodplains, soil conditions, landfills, and quarries. Additional data and layers and more comprehensive data for the existing layers will be added as they become available. More detail on the REAP Region NRI will be available at a concurrent session at the upcoming REAP Regional Water Conference May 27 in El Dorado. The NRI will be made available this summer on the Kansas Applied Remote Sensing (KARS) website.

Guidelines for Water Service Area Annexations Now Available Online

Guidelines for the transfer of water service territory between cities and rural water districts are now complete and available on-line. The guidelines were developed by a workgroup composed of representatives of KRWA, KMU, LKM and REAP. The document was prepared to provide assistance to cities and rural water districts to help them deal with water service to annexed land, requests for water service outside of

city boundaries, or between other rural water districts. The guidelines and cooperative effort in creating them are being presented at several state conferences including the KRWA conference recently held in April, as well as the upcoming KMU and REAP conferences in May. The guidelines will be made available by all the partner organizations including REAP at <http://reap-ks.org/water.html>

What is the REAP Water Resources Committee?

In 2007, the Water Resources Committee was formed as a subset committee of REAP with the purpose of serving as a regional forum and informational resource for water quality and quantity issues in South Central Kansas. The Committee is currently comprised of 26 cities and counties. The WRC also serves as a regional voice on behalf of the members before federal, state and regional agencies. Interested communities can attend our meetings and contact the Committee's Executive Officer, Angela Buzard, at the information below to learn more about the Committee.



WaterWise

c/o REAP Water Resources Committee
Hugo Wall School
1845 Fairmount, Campus Box 155
Wichita, KS 67260

Feedback and topic suggestions are welcome!

Please contact Angela Buzard
Phone: (316) 978-3401
E-mail: angela.buzard@wichita.edu
Website: www.reap-ks.org