



**Water Resources Committee
Regional Economic Area Partnership (REAP)
Meeting Agenda
10:00 a.m., November 7, 2010
Hughes Metropolitan Complex
Mayor Dion Avello, Chairman**

Water Resources Committee Mission Statement: *“To serve as a regional voice and assist communities in their efforts to influence local, state, and national policy to obtain safe, affordable, and sustainable water resources.”*

- I. Welcome and Introductions** – Mayor Dion Avello
- II. Approval of the Minutes from the September 12, 2011 Meeting** – Mayor Dion Avello
Recommended Action: Approve or modify minutes as needed (p 2-4)
- III. 2011 Work Plan Review and Highlights** – Dane Baxa
Review and Discuss 2011 Work Plan and Achievements (p 5-7)
- IV. Presentation and Discussion of 2011 WRC Survey Results** – Dane Baxa
Present and Discuss 2011 WRC Survey Results (p 8-10)
- V. Identification of Objectives for 2012 Work Plan** – Mayor Dion Avello
Discuss work plan objectives and action steps for 2012
- VI. Water Resources Committee Budget and Staffing** – Dane Baxa
Recommended Action: Approve or modify 2012 WRC Budget and Staffing (p 11-13)
- VII. Report of the Executive Officer** – Dane Baxa
 - a. REAP Regional Water Research Plan* (p 14-15)
 - b. “Local Government Guide to Water Resources Organizations”* (p 16-24)
 - c. Kansas Joint Committee on Energy and Environmental Policy* (p 25)
 - d. Update on REAP Regional Water Tour* (p 25)
 - e. REAP Listening Tour* (p 26)
 - f. Milwaukee Water Council Summit* (p 26)
 - g. ICMA 97th Annual Conference* (p 26)
- VIII. Unscheduled Business Items and Updates**
- IX. Adjourn**

Next WRC meeting is Monday December 11th at 9:30 a.m. at the Hughes Metroplex

I. Welcome and Introductions

Mayor Dion Avello, City of Derby, called the meeting to order. Members, staff, and guests introduced themselves.

II. Approval of the Minutes from August 10, 2011 Meeting

Ms. Lavonta Williams, City of Wichita, moved (Mayor Terry Somers, City of Mount Hope) to approve the minutes from the August 10, 2011 meeting without change. The motion passed unanimously.

III. Water Resources Committee Engagement Discussion

Mayor Avello asked for input from committee members on the current work plan for the Water Resources Committee. He also commented that there was no voice from rural water districts (RWDs) and asked members if they should be invited to the meetings too. Mr. Dane Baxa, REAP Water Resources, clarified that within this strategic work plan the committee has accomplished many items, be it providing information via newsletters, identifying water issues, and representing the organization at other water meetings (BAC, KWO, etc.). The work plan is a guide for the Water Resources Committee (WRC) to be accountable and forward moving.

Ms. Kathy Sexton, City of Derby, said that a lot of these items should be continued and perhaps make a REAP WRC mission instead of using the REAP one. Mr. Joe Pajor, City of Wichita, suggested changing the outline/ format of the work plan to put REAP's goals in one column and WRC's goals in another to show how they fit.

Mr. Dale Goter, City of Wichita, asked staff if the WRC was governed by REAP and Mr. Yager responded that WRC is under REAP, their actions need to be voted on by the full REAP board, and REAP is guided by WRC on water related issues. The WRC also has a different funding source. Mayor Terry Somers, City of Mount Hope, added that at the beginning of REAP the board did not want to deal with water, and then they saw the value it brought and added it to the organization. It was only about bringing together cities and counties.

IV. Regional Water Planning, Engaging Key Partners

Mr. Baxa shared with the committee that the Technical Sub-Committee met on September 7 in Newton. They discussed if it would be valuable to bring additional people into the discussion about long-term water planning. Ms. Susan Erlenwein, Sedgwick County, added that the meeting talked about the relationship between Sedgwick County and its RWDs; there are homes/ wells going dry that cities cannot reach so they depend on RWDs for supply. She thought it was important for WRC to hear them. Ms. Kathy Sexton asked if RWDs should be included in the dialogue with WRC and other state agencies. Mr. Yager explained if RWDs were to become paying members, they would need to change the bylaws. Mr. Baxa added that the committee invites Kansas Water Office (KWO), Kansas Water Authority (KWA), Watershed Restoration and Protection Strategy (WRAPS), and Basin Advisory Committees

(BACs). He and Mr. Yager explained that there was no clear role for participants other than providing reports to cities and counties on the WRC.

Mr. Herb Llewellyn, City of El Dorado, said that at the beginning of the WRC it was decided not to bring in RWDs. Ms. Angela Buzard, Environmental Finance Center, also added that the committee was not interested in inviting RWDs but perhaps with new members the committee may decide to change invite them. There would need to be a lot of communication with RWDs to build trust. Mr. Herb Llewellyn agreed with Ms. Buzard that communication is very important for a good working relationship with RWDs. Mayor Somers said that if RWDs do come they should not be able to vote, but only invite them for long-term planning.

Ms. Dana Walden, City of Park City, noted that in some communities there are overriding issues between city government and their surrounding RWDs. WRC should define its mission and focus on how to work better together with RWDs. Ms. Sexton agreed to have a defined mission about long-term supply planning. She added that a time to get RWD board members would be at the Kansas Rural Water Association (KRWA) conference. She suggested perhaps having a session at the conference and inviting KRWA to monthly meetings.

Mr. Pajor explained that most RWDs get their water supply through REAP member cities and not all of them are independent of city governments.

It was agreed that staff would develop a mission statement for the Water Resources Committee, a regional (water) action plan, which would also create a timeline for engaging other water related organizations. Ms. Kathy Sexton moved (Ms. Susan Erlenwein) for staff to develop a mission and plan. The motion passed unanimously.

V. 2011 Water Resources Committee Bus Tour

Mr. Baxa shared that he would like to have another education bus tour this fall. It would be a continuation of May's conference theme, *Water's Role in Economic Development*. He thought it would be a good idea to look at the effect of the Kansas Star Casino in Mulvane on the region's water supply. The tour would look at how one economic development impacts the region, beginning in El Dorado, Augusta, Mulvane, Kansas Star Casino, and ending at Wyldewood Cellars. He plans to have this tour in late October/ early November. Engineers, professional staff, and elected officials would benefit from the tour. Mr. Herb Llewellyn moved (Mayor Terry Somers) to have staff continue planning a tour for the fall. Motion passed unanimously.

VI. Report of the Executive Officer

Mr. Baxa said that Ms. Kate Flavin, REAP Water Resources Graduate Assistant, was working on developing a local government's guide to water resources agencies. The guide would serve as a resource to all (specifically new) officials who need basic water related information. He was also looking forward to going to Milwaukee for the ICMA conference and water summit next week and plans to share relevant information upon his return.

VII. Unscheduled Business Items and Updates

The REAP stormwater rate fee survey is nearly complete and will be online by October 1st.

VIII. Adjourn

Water Resources Committee Attendance for September 12, 2011	
<u>Name</u>	<u>Jurisdiction</u>
Josh Shaw	City of Augusta
Brian Meier	Burns and McDonnell/ LABAC
Kent Brown	City of Clearwater
Kathy Sexton	City of Derby
Dion Avello	City of Derby
Kurt Bookout	City of El Dorado
Herb Llewellyn	City of El Dorado
Angela Buzard	Environmental Finance Center - WSU
Kelly Fuller	Environmental Finance Center - WSU
Kiel Mangus	City of Goddard
John Carder	City of Hesston
Tom Winters	Kingman County
Kurt Yowell	MKEC
Terry Somers	City of Mount Hope
Dana Walden	City of Park City
Susan Erlenwein	Sedgwick County
Larry Mangan	City of Wellington
Hoyt Hillman	Wichita
Deb Ary	City of Wichita
Dale Goter	City of Wichita
Joseph Pajor	City of Wichita
Lavonta Williams	City of Wichita
Dane Baxa	WSU
Misty Bruckner	WSU
Kate Flavin	WSU
Taylor Tedder	WSU
Nancy McCarthy Snyder	WSU
Joe Yager	WSU

2011-2014 REAP Strategic Plan

**2011 REAP Water Resources Committee
Work Plan Review and Highlights**

Mission: To guide state and national actions that affect economic development in the region, and to adopt joint actions among member governments that enhance the regional economy.

Mission: To serve as a regional voice and assist communities in efforts to influence local, state, and national policy in obtaining safe, affordable, and sustainable water resources.

Provide a unified voice to promote regional economic development.

- 1) Collaborate with private, non-profit, and public sector stakeholders on regional economic issues.
- 2) Strengthen relationships with existing partners.
- 3) Encourage dialogue on regional economic development.

Provide a unified voice on policy issues concerned with water quality and quantity before federal, state, and local agencies.

- 1.1) Partnered with private, non-profit, and public sector on water quality and quantity issues that are supported or that could potentially be supported by the WRC.
 - a) Partnered with Kansas Biological Survey to further develop REAP Water Resources Planner.
 - b) Invited Wichita State University MPA students to discuss regional water planning study.
 - c) Partnered with representatives from the City of Hays to discuss water conservation as a beneficial use in state water rights law.
 - d) Partnered with KDHE representatives to discuss regional planning grant opportunities.
- 2.1) Disseminated the mission of the WRC to state and national partners by attending and presenting information at special meetings.
 - a) Presented REAP Water Resources Planner at a WAMPO STARS workshop.
 - b) Provided REAP WRC representation at over 40 water related meetings, conferences, and workshops.
- 3.1) Facilitated discussion on the value of water resources in a regional economy.
 - a) Coordinated 12 sessions related to “Water’s Role in Economic Development,” at the 2011 REAP Regional Water Conference.

Guide state and national policies that impact the regional economy.

- 1) Engage local leadership to represent the region at the state and national level.

Guide state and national policies that impact regional water quality and supply.

- 1.1) Identified water issues with legislative implication.
 - a) Water Rights Conservation Program.
 - b) Invited City of Hays to WRC Meeting.
- 1.2) Coordinated REAP membership when appropriate to engage in the state legislation process on WRC supported issues.
 - a) Provided letters of support of the WRCP to state legislators.
 - b) Provided information to the Kansas Water Authority on the status of the El Dorado water feasibility study.

- 2) Develop relationships with, local, state and federal governmental officials.
- 2.1) Monitored activities of federal, state, and local agencies affecting water supply and quality in the region and advise members of relevant issues and partnership opportunities.
 - a) Reported progress of the El Dorado water feasibility study to the Kansas Water Authority.
 - b) Reported water restrictions, surface water algae blooms, and other issues affecting water supplies in the region.
 - c) Reported on regional water meetings:
 - i) Basin Advisory Committees.
 - ii) Groundwater Management Districts.
 - iii) Kansas Water Authority.
 - iv) Division of Water Resources.
 - v) State and national conferences.
 - d) Supported the State Water Plan Fund be fully appropriated by attending the Kansas Water Authority meetings and educating legislators on the issue.
- 2.2) Supported the League of Kansas Municipalities and their legislative priority to re-evaluate the State Water Plan Fund and the Kansas Water Authority.
- 2.3) Advised members on legislation regarding water conservation as a beneficial use in state water rights policy.
- 2.4) Invited state and federal officials to REAP WRC meetings.

Engage stakeholders on issues shaping our regional economy.

- 1) Provide regional forums that connect REAP membership with private, non-profit, and public sector stakeholders.

Engage stakeholders on issues of water quality and supply by providing a regional forum for discussion, communication, and information sharing opportunities.

- 1.1) Conducted 8 Water Resources Committee meetings to discuss regional water issues and invited stakeholders from the private, non-profit, and public sector to sponsor or present information.
- 1.2) Conducted 3 meetings with the Technical Sub-Committee to discuss:
 - a) Local Government Guide to Water Resource Agencies.
 - b) REAP Water Resources Planner.
 - c) Regional water plan outline.
 - d) Regional water planning research plan.
- 1.3) Coordinated the 2011 REAP regional water conference with:
 - a) 19 guest presenters from local, state, and national agencies.
 - b) “Water’s Role in Economic Development,” conference theme.
 - c) Over 120 participants.
- 1.4) Developed a communication with media contacts to attend WRC meetings and to disseminate information to WRC communities.

1) Provide regional forums that connect REAP membership with private, non-profit, and public sector stakeholders. (continued)

2) Conduct outreach on the purpose and accomplishments of REAP.

1.5) Assembled and disseminated informational resources related to water quality and supply issues including:

- a) Annual regional survey of water and wastewater rates.
 - i) Additional stormwater rate information added to survey.
- b) Financial review of water service territory agreements.
- c) Provided updates on the Friends of the Kaw lawsuit
- d) Provided information on water re-use and conservation.
- e) Provided information on oil and gas production occurring over the Equus Beds to the Kansas Joint Committee on Energy and Environmental Policy.

2.1) Conduct outreach on the purpose and accomplishments of the REAP Water Resources Committee.

- a) Sent out meetings reviews following WRC meetings.
- b) Disseminated “WaterWise,” bi-monthly newsletter and include regional, state, and national municipal water related articles.
- c) Developed and distributed “Water Wednesday,” weekly publication delivered to WRC members about local, state, and national water information and education opportunities.
- d) Informed REAP WRC membership of educational opportunities.

Support inter-jurisdictional planning on issues affecting economic development.

1) Promote the benefits of a sustainable regional economy.

2) Engage professional staff in multiple jurisdictions for sustainable planning.

Support inter-jurisdictional planning on issues affecting regional water quality and supply.

1.1) Promoted the benefits of a sustainable regional economy

- a) Reviewed and discussed interconnection for meeting long-term water supply needs in our region.
- b) Discussed interconnection for redundancy in water supply for regional water providers.
- c) Researched and disseminated information on our regional water supply and demand.
- d) Reviewed and assessed models of interconnection and consolidation of water supplies at 2011 REAP Water Conference.
 - i) WaterOne, Kansas City regional public water supply.
 - ii) Marias Des Cygnes Public Utility Authority, regional water supply for city of Paola and city of Louisburg.
- e) Developed Regional Water Plan outline.
- f) Developed water planning research guide.
- g) Coordinated joint REAP and WRC Meeting with presentation and discussion on WSU MPA student’s decision making class research project “Thinking and Acting Regionally on Water Supply.”

2.1) Developed 2011 HUD Sustainable Communities Regional Planning Grant Application for REAP.

- a) Identified over 20 partner communities and organizations.
- b) Leveraged over \$800,000 from in-kind match.

2011 Water Resources Committee Survey Results

1. Provided a unified voice on policy issues concerned with water quality and supply before federal, state, and local agencies.

	Number of Response(s)	Response Ratio
Exceeded Expectations	7	14%
Met Expectations	35	69%
Did Not Meet Expectations	6	12%
Other	3	6%
Total	51	100%

Comments:

* Performance uneven. Met expectations sometimes on some issues, but not on others

* A good start - Still in formation stage

* Don't know

2. Guided state and national policies that impact regional water quality and supply.

	Number of Response(s)	Response Ratio
Exceeded Expectations	4	8%
Met Expectations	30	59%
Did Not Meet Expectations	12	24%
Other	5	10%
Total	51	100%

Comments:

* Was more guided by policies rather than guiding policies

* Little if any effect yet. Farm bureau is more effective blocking us at this time

* Not Sure (3)

3. Engaged stakeholders on issues of water quality and supply by providing a regional forum for discussion, communication and information sharing.

	Number of Response(s)	Response Ratio
Exceeded Expectations	14	27%
Met Expectations	33	65%
Did Not Meet Expectations	2	4%
Other	2	4%
Total	51	100%

Comments:

* The beginnings of such an effort is there but not fully realized

* Many stakeholders not at the table yet.

4. Encouraged regional collaboration and planning on issues affecting water quality and supply.

	Number of Response(s)	Response Ratio
Exceeded Expectations	12	24%
Met Expectations	33	65%
Did Not Meet Expectations	4	8%
Other	2	4%
Total	51	100%

Comments:

* Its starting to come together, but there is still a ways to go

* Begining to be an effective regional force

5. Please assign the level of importance you feel each item merits in terms of Committee support and involvement in the upcoming year.

Top number is the count of respondents selecting the option.

Bottom % is percent of the total respondents selecting the option.

	Very Important	Important	Moderately Important	Of Little Importance	Unimportant
Regional Water Conference: The WRC should continue to coordinate an annual Regional Water Conference to promote education and networking opportunities on water issues with the REAP region.	20 41%	20 41%	8 16%	0 0%	1 2%
Communication Dissemination: The WRC should continue to produce communication publications that promotes education and communication among the region by highlighting relevant projects, activities, and opportunities from the region, state, and nation.	23 47%	20 41%	4 8%	1 2%	1 2%
Water, Wastewater, and Stormwater Rate Survey: The WRC should continue to annually survey and update the database of member utility rates.	19 39%	22 45%	6 12%	1 2%	1 2%
State Water Plan Fund: The WRC should identify and advise state elected officials on issues related to the funding of the State Water Plan and advocate to ensure that the plan is adequately funded.	21 43%	21 43%	6 12%	0 0%	1 2%
Aquifer Storage and Recovery: The WRC should continue to support state financial participation in the Equus Beds Aquifer Storage and Recovery (ASR) Project.	17 35%	15 31%	12 24%	4 8%	1 2%
REAP Water Resources Planner: The WRC should continue to develop and disseminate information on the GIS based map of the REAP region with multiple layers of natural resource data, which can be used by communities for land use planning.	12 24%	19 39%	12 24%	5 10%	1 2%
Long-range Regional Water Planning: The WRC should lead regional water planning efforts developing affordable, abundant, high quality water resources to sustain economic development in South-central Kansas.	23 47%	20 41%	4 8%	1 2%	1 2%
Legislative Issues: The WRC should continue identifying legislative agenda items on water issues.	24 49%	20 41%	3 6%	1 2%	1 2%
WRC Membership: The WRC should develop an outreach/marketing plan that will engage potential and existing communities in South-Central Kansas to be members of the WRC.	19 39%	16 33%	11 22%	2 4%	1 2%
WRC Engagement: The WRC should monitor, report back, and invite relevant regional, state, and national water organizations to attend WRC meetings and events.	14 29%	20 41%	13 27%	1 2%	1 2%

Comments:

- * Concentrate on being a regional entity, getting regional buy-in, and presenting a regional voice to the State and National interests.
- * Some regional water organizations do not have these best interest of members at heart ie. RWD.
- * A good start. Keep adding Cities and members. Attend the Farm bureau meetings as well to keep abreast of their efforts and better understand them. Maybe we can eventually educate them.
- * If you want more participation in WRC meetings, they need to be held in different places and on a day other than Monday.
- * The rate survey should be coordinated with KDHE as they already have a water rate survey in service to communities.
- * The first few question, relating to fulfillment of expectations, may not be too helpful without knowing what the expectations were. Speaking for myself, expectations were pretty low in some categories and so meeting those expectations wasn't a great achievement. All that said, I support the WRC and believe it has great potential to benefit the region.
- * The WRC should identify, communicate with and invite all water organizations to attend and be actively involved. WRC should maintain it's membership and focus on municipal and county water issues. Other organizations should have a right to attend and participate but not vote.

6. Please assign the level of importance you feel each item merits in terms of support and involvement in the upcoming year.

Top number is the count of respondents selecting the option.
Bottom % is percent of the total respondents selecting the option.

	Very Important	Important	Moderately Important	Of Little Importance	Unimportant
Topeka-Based Representation: The WRC should contract for a legislative liaison in future legislative sessions if items of importance related to water arise.	8 16%	12 24%	24 49%	2 4%	3 6%
Asset Management Training: Coordinate a training opportunity for water and wastewater utilities to develop an asset management plan, which is a "business model" approach to facility management that uses fewer resources to achieve a target level of service.	3 6%	22 45%	16 33%	6 12%	2 4%
Hydraulic Fracturing: Assemble information on gas and oil production relating to water quality in South-central Kansas.	10 20%	15 31%	18 37%	3 6%	3 6%

Comments:

- * In Topeka - it will take at least 2 years to establish our message and gain rapport. Better Mgmt and Asset Mgmt is always good. It will take extra effort to get the education and cooperation on BOTH sides of the Enviro vs Oil and Gas groups.
- * There are other organizations already filling the asset management role and training.
- * The center of gravity for dealing comprehensively with any water-related issue is Topeka.

7. The Water Resources Committee is heading in the right direction.

	Number of Response(s)	Response Ratio
Strongly Agree	11	23%
Agree	26	54%
Not sure	11	23%
Disagree	0	0.0%
Strongly Disagree	0	0.0%
Total	48	100%

Comments:

- * The WRC appears to be still trying to find its footing.
- * I believe so. There is still low participation. The group is hard pressed to settle and stay on specific goals. That's OK. The group is new. You have a forum to bring in outside speakers, innovations and success stories. As you educate and highlight local savings and BMTs the group and it's effectiveness will grow.
- * Success generally does happen over night and even if and when achieved can always be improved upon.
- * I agree that it is headed in the right direction but the real challenge is getting policy makers/elected officials to see the threats to water availability and quality before we drive off a cliff. The recent Wichita Eagle article about reservoirs is, I think, and example of the challenge. Read carefully, the article painted a dire picture but didn't seem to convey any immediacy. Anyone involved with water knows that a solution undertaken now may take 20-30 years to come to fruition.
- * Clarification of purpose and membership needed.

8. The Water Resources Committee provides adequate value to all communities in the region.

	Number of Response(s)	Response Ratio
Strongly Agree	8	17%
Agree	22	46%
Not Sure	17	35%
Disagree	1	2%
Strongly Disagree	0	0.0%
Total	48	100%

Comments:

- * Are some communities not participating due to fears of being ridden over by other communities?
- * Many smaller local communities to not see the value yet. Keep listening to them, go to the Water dist meetings.
- * Adequate - yes/equal - not sure - smaller communities just along for the ride sometimes struggling to keep up
- * Since the focus seems to be the ASR project, which is important, the smaller communities may feel left out.
- * The fact that participation is somewhat spotty suggests that many communities don't see too much value in the WRC. A perception persists that water is essentially a local concern and that what is happening in other communities is nice to know but not essential to know.

REAP Water Resources Committee Proposed 2012 Budget

The 2012 budget proposal is based on the following:

1) Revenues available to REAP for calendar year 2012 are projected at \$191,566. The revenue projections for calendar year 2012 are based on the following assumptions: a) REAP WRC will receive assessments of \$81,692 from the current WRC membership of twenty-one cities and six counties (see attached assessments); b) interest earnings projected at \$4,000; and c) 2011 carryover projected at \$105,874.

2) The Executive Officer of Water Resources will serve at 0.90 FTE for 2012.

3) The Center for Urban Studies, Wichita State University, continues to provide staff support to the REAP Water Resources Committee in calendar year 2012, as follows:

- a) Performing a secretariat function for the committee, that is, preparing agendas and organizing committee, subcommittee, and special committee meetings, scheduling invited guests, disseminating meeting agenda materials, recording minutes of meetings, keeping official records for the committee, executing official communications, and assisting the committee in identifying regional issues and conducting research on those regional issues.
- b) Identify, monitor and update members on any legislative issues or initiatives regarding state water resources.
- c) Provide consultation and technical assistance in addressing priorities identified in the Committee Work Plan for 2012, specifically staffing the Water Resources Committee, Technical Subcommittee as needed, and any short-term special purpose committees, and conducting research in support of the issues before those committees.
- d) Continue to distribute the WaterWise newsletter informing committee members as well as other individuals about regional water related meetings and activities, with particular attention to policy related issues.
- e) Develop and coordinate ongoing educational forums including an annual regional water conference.
- f) Identify additional grant opportunities through the state and federal government to assist in water resource planning and development.
- g) Attend and report on the meetings and activities for the following water related committees and agencies as necessary:
 - Kansas Water Authority
 - Groundwater Management District #2
 - Lower Arkansas and Walnut Basin Advisory Committees
 - Kansas Dept of Health and Environment (regional meetings)
 - Kansas Water Office (regional meetings)
 - KDA Division of Water Resources (regional meetings)
 - Chamber Environmental Resources Committee
 - Kansas Rural Water Association
 - Watershed Restoration and Protection Strategies (regional meetings)
 - Various agency related conferences in the region and state

4) Topeka-based representation is engaged by the REAP WRC in calendar year 2012.

WRC Revenues

Projected WRC Revenues for 2012

Revenues	Amount	Description
Annual Membership Assessments	\$81,692	Membership dues
Special Assessments	-	Special assessments
Other Revenues Received	\$4,000	Interest and other revenues received (estimated)
Carryover Funds	\$105,874	Prior-year carryover (estimated)
Total	\$191,566	

WRC Expenditures

Proposed REAP WRC Budget for 2012

Expenditures	Amount	Description
Staffing		
Executive Officer	\$55,018	Compensation and benefits
Graduate assistant	\$16,050	Compensation and benefits
<i>Staffing Subtotal</i>	<i>\$71,068</i>	
Operating		
Current office expense	\$7,110	Computing, telephone, fax, equipment, etc.
Consultation and technical assistance	\$5,000	Addtl assistance through WSU or other sources
Other operating—general	\$8,000	Meeting expense, memberships, travel, etc.
Legislative liaison	\$5,000	Topeka-based representation, receptions, travel
Project funds	\$15,000	
<i>Operating Subtotal</i>	<i>\$40,110</i>	
Total	\$111,178	

Total Proposed REAP WRC Budget for 2012

Total Revenues	Total Expenditures	Total Remaining Balance
\$191,566	\$111,178	\$80,388

Water Resources 2012 Assessments

Committee Member	2011 Certified Population	2011 Assessment	2012 Assessment	Percent Change
Andover	11,791	\$3,794	\$3,884	2.38%
Augusta	9,274	\$1,656	\$1,696	2.39%
Bel Aire	6,769	\$1,515	\$1,508	-0.48%
Benton	880	\$361	\$366	1.39%
Butler Co.	65,880	\$800	\$800	0.00%
Clearwater	2,481	\$483	\$486	0.64%
Derby	22,158	\$5,719	\$5,662	-1.00%
El Dorado	13,021	\$3,948	\$3,977	0.72%
Goddard	4,344	\$1,304	\$1,326	1.67%
Harvey Co.	34,684	\$800	\$800	0.00%
Hesston	3,709	\$1,287	\$1,278	-0.69%
Hutchinson	42,080	\$7,060	\$7,156	1.36%
Kechi	1,909	\$435	\$443	1.88%
Kingman Co.	7,858	\$800	\$800	0.00%
Maize	3,420	\$1,251	\$1,257	0.44%
McPherson	13,155	\$3,999	\$3,987	-0.31%
McPherson Co.	29,180	\$800	\$800	0.00%
Mt. Hope	813	\$365	\$361	-1.10%
Newton	19,132	\$4,383	\$4,435	1.18%
Park City	7,297	\$1,602	\$1,547	-3.42%
Rose Hill	3,931	\$1,307	\$1,295	-0.93%
Sedgwick	1,695	\$427	\$427	0.03%
Sedgwick Co.	498,365	\$800	\$800	0.00%
Sumner Co.	24,132	\$800	\$800	0.00%
Valley Center	6,822	\$1,498	\$1,512	0.91%
Wellington	8,172	\$1,576	\$1,613	2.34%
Wichita	382,368	\$31,914	\$32,678	2.39%
Total		\$80,684	\$81,692	1.25%

REAP

Cities

Over 10k= \$3000 + \$.065/pc

3-10k= \$1000+ \$.065/pc

Under 3k= \$200+ \$.065/pc

Counties

Over 50k= \$3000 + \$.025/pc

Under 50k= \$1500+ \$.025/pc

Water Resources

Cities

Over 20k=\$4000 + \$0.075/pc

10-20k= \$3000 + \$0.075/pc

3-10k= \$1000+ \$0.075/pc

Under 3k= \$300+ \$0.075/pc

Counties

\$800/each

REAP Regional Water Research Plan

Purpose Statement

The REAP Water Resources Committee (WRC) has committed to lead regional water planning efforts to develop affordable, abundant, high quality water resources that sustain economic development in South-central Kansas. In order to lead this effort, the WRC Technical Sub-Committee developed the following “Regional Water Research Plan.” The information obtained in the research will help develop regional water planning efforts that align long term goals for water quantity and quality in the region, and best management practices that maximize water infrastructure efficiencies and utilization of existing water resources.

Timeline and Roles

The following “Regional Water Research Plan,” will be a guide for moving the regional water planning effort forward. Starting in January 2012, REAP WRC staff will coordinate with the Water Resources Technical Sub-Committee to develop informational resources on specific strategies and objectives that are identified in the research plan below. The full Water Resources Committee will be given a report on the information from the Technical Sub-Committee Meetings, and have the opportunity to discuss the findings and provide direction for next steps.

The first step will be to develop a “Community Capacity Survey,” that will be sent to all water suppliers in the region. The information obtained in this survey, as well as utilizing information from previous regional water studies, will be a baseline for water resource information in the region. Having a baseline of information will help the WRC identify initial opportunities for inter-jurisdictional collaboration, and provide a better understanding of the region’s potential to develop water resources for economic development.

Once the WRC has identified collaboration opportunities, the Technical Sub-Committee and staff will identify other local, state, and national resources to utilize and coordinate the planning efforts. The Technical Sub-Committee will also assess opportunities to collaborate and leverage resources of the WRC project funds for developing specific action steps of the planning process.

Regional Water Planning Goals

To accomplish developing affordable, abundant, high quality water resources, the WRC will integrate water, wastewater, and stormwater planning in a manner that:

1. Aligns long term goals for water quantity and quality in the region.
2. Maximizes water infrastructure efficiencies and utilization of existing water resources.

Strategies and Objectives

To achieve the defined goals, the WRC has developed strategies and objectives to achieve the two goals.

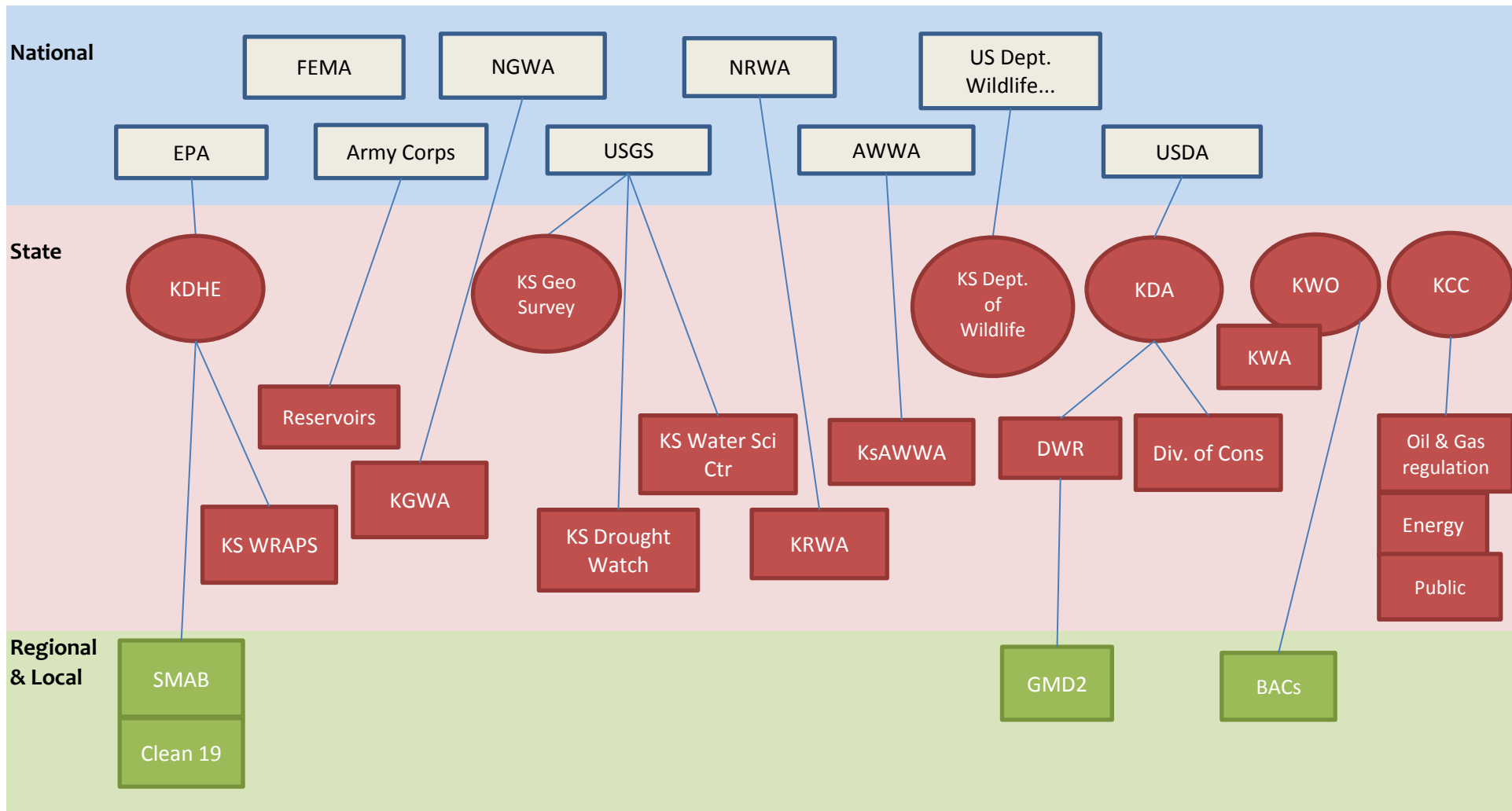
1. Align long term goals for water quantity and quality in the region


- a. Develop a “Community Capacity Survey,” that will identify and organize information about specific community’s water resource needs and plans in South-Central Kansas (WRC Sub-Committee):
 - i. Identify baseline water resource capacity:
 1. Groundwater availability.
 2. Surface water availability.
 3. Waste-water treatment capacity.
 4. Water quality assessments.
 - ii. Evaluation of water infrastructure needs and attendant long-term cost burdens that are associated with strategies for investments (Asset Management)
 - iii. Identify local water and wastewater demand forecasts.
 - iv. Identify long range water supply plans and future water infrastructure investments.
 - v. Identify “sub-regional,” or potential interconnections between water supplies.
- b. Utilize existing information from previous water planning studies and initiatives (WRC Staff):
 - i. Identify, organize, and present relevant water planning information that has already been assembled, to understand the history of existent efforts in the region.
- c. Identify and utilize regional, state, and national resources to align the goals of the WRC (WRC Staff):
 - i. Environmental Protection Agency.
 1. Kansas Department of Health and Environment.
 - ii. United States Army Corps of Engineers.
 - iii. Kansas Department of Agriculture, Division of Water Resources.
 1. Groundwater Management District #2.
 - iv. Kansas Water Plan, Kansas Water Authority, Kansas Water Office.
 1. Lower Arkansas and Walnut Basin Advisory Committees.
 - v. Other regional, state, or national investments in water resources.
- d. Continue the development of GIS database of existing and planned water infrastructure investments (Kansas Biological Survey):
 - i. Water resources (surface water and groundwater).
 - ii. Water treatment facilities.
 - iii. Waste-water treatment facilities.
 - iv. Storm-water plans and projects.
 - v. Generalized distribution and interconnections between PWS.

2. Maximize water infrastructure efficiencies and utilization of existing water resources

- a. Identify and coordinate Water Resources Committee meetings to discuss WRC member community’s water planning activities that may impact other jurisdictions. (WRC and staff)
- b. Identify and support water engineering studies and discussions that align with WRC planning goals. (WRC and WRC Technical Sub-Committee)
- c. Discuss areas of common interests and opportunities for regional collaboration (WRC):
 - i. Growth issues that pose inter-jurisdictional challenges and opportunities. (WRC)
 - ii. Best management practices that maximize energy and water conservation in water, wastewater, and stormwater systems. (WRC Technical Sub-committee and staff)
 - iii. Assessment and implementation of programs and practices to improve water use efficiency or appropriately reuse water. (WRC staff)
 - iv. Alternatives analyses that evaluate the surface water quality impacts of water, transportation, and housing infrastructure solutions. (WRC Technical Sub-Committee)

Water Governance in Kansas



 Identifies state organizations in the Kansas Water Plan

Local Government Guide to Water Resources Agencies

Regional

Clean 19 Communities
Groundwater Management District No. 2
Lower Arkansas River Basin Advisory Committee
Walnut River Basin Advisory Committee
Sedgwick County Stormwater Management Advisory Board (SMAB)
Arkansas River Coalition

State

Kansas Corporation Commission
Kansas Department of Agriculture: Division of Conservation
Kansas Department of Agriculture: Division of Water Resources
Kansas Department of Health and Environment: Bureau of Water
Kansas Department of Wildlife, Parks, and Tourism
Kansas Water Authority/ Kansas Water Office
Kansas Watershed Restoration and Protection Strategy (WRAPS)
Kansas State University, Kansas Water Resources Institute
Kansas Drought Watch
Kansas Alliance for Wetlands and Streams
Kansas Geological Survey
Kansas Geological Survey: High Plains/ Ogallala Aquifer Information
Kansas Ground Water Association
Kansas Rural Water Association
Kansas Section of AWWA
Kansas Water Congress
Kansas Water Environment Association
State Association of Kansas Watersheds
State Conservation Commission
U.S. Geological Survey: Kansas Water Science Center
Wetlands & Wildlife National Scenic Byway

National

American Water Works Association
American Water Resources Association
Environmental Protection Agency (EPA)
Federal Emergency Management Association
Interstate Council on Water Policy
National Association of Conservation Districts
National Drought Mitigation Center
National Groundwater Association
National Resources Conservation Service
National Rural Water Association
National Water Resources Association
United States Army Corps of Engineers, Tulsa District
United States Bureau of Reclamation
United States Department of Agriculture
United States Geological Survey

Regional

Clean 19 Communities

- Consortium of 19 Phase 2 cities in South-central Kansas that must develop stormwater management plans.
- Discuss and leverage resources to develop stormwater management plans.

Groundwater management District No. 2

www.gmd2.org

- 1st step in approving applications for permits: to appropriate water, to change information on a water right, plugging abandoned well agreement. They administer new water permits and water meter implementation.
- Provides a list of rules and regulations for water rights.
- Provide administration for groundwater monitoring and weather stations.

Lower Arkansas River Basin Advisory Committee

www.kwo.org/about_us/BACs/Lower_Arkansas_River_Basin.html

- Provides a forum for the public residing in the Basin to weigh in on water issues and provides reports and/or recommendations to the Kansas Water Authority for review and adoption.
- Promotes projects supporting water resources in the basin such as Aquifer Storage and Recovery Project, Wichita and Little Arkansas WRAPS, re-energizing Rattlesnake Creek, Dam Rehabilitation projects, etc.

Walnut River Basin Advisory Committee www.kwo.org/about_us/BACs/Walnut_River_Basin.html

- Contributes research regarding the protection, conservation, and beneficial use of water for the benefit of landowners, wildlife, recreational, residential and industrial users.
- Current projects in the basin include several watershed restoration and protection strategies.

Sedgwick County Stormwater Management Advisory Board (SMAB)

- Serves as an advisory board to the County Commission for stormwater management policy development.
- Promotes stormwater management and inter-jurisdictional cooperation for cities within Sedgwick County.
- Created a stormwater management manual for adoption by communities in Sedgwick County.

Arkansas River Coalition

www.arkriver.org

- Review permits that affect water quality, geomorphology and biology of rivers, streams, wetlands.
- Promotes river protection and safety.

State

Kansas Corporation Commission

<http://www.kcc.state.ks.us/>

- Regulates natural gas, electricity, telephone and transportation.
- Requires oil and gas producers to protect the environmental and correlative rights.
- Regulates public utilities, common carriers, motor carriers, and oil and gas producers with no competition.

Kansas Department of Agriculture: Division of Conservation <http://www.ksda.gov/doc/content/395>

- Oversees Conservation Districts in the state.

Kansas Department of Agriculture: Division of Water Resources

www.ksda.gov/dwr

- Administers laws and responsibilities regarding water resources.
- Water appropriations – manages state’s water supply through permits, reviews and inspections.
- Water structures – regulates water structures for safety, provides assistance to local communities in National Flood Insurance Program.

- Water management services – provides data and technical support to all agency programs, deals with interstate water issues
- Basin management team develops plan for water resource issues identified in Kansas State Water Plan.
- DWR Currents – weekly newsletter
- DWR website has many statutes, regulations, and forms necessary for managing water rights.

Kansas Department of Health and Environment: Bureau of Water www.kdheks.gov/water

- Oversees programs related to water quality in public water supplies, wastewater treatment systems, sewage disposal, and nonpoint sources of pollution. Programs are designed to provide safe drinking water, prevent water pollution, and assure compliance with state and federal laws and regulations.
- Provides water quality standards, regulations, and resources to meet standards and regulations.
- Has information for water quality reporting forms and documents.

Kansas Department of Wildlife, Parks, and Tourism www.kdwp.state.ks.us

- Fishing – applications, fees, regulations and programs.
- Boating – regulations, requirements, registration and permits, education, and links.
- Stream assessment and monitoring (range and distribution of species)
- Wildlife and environment education
- Environmental reviews of developments to ensure safety of wildlife and environment.

Kansas Water Authority/ Kansas Water Office www.kwo.org

- Coordinates water planning process in Kansas with the Kansas Water Authority
- KWA recommends budget for the Kansas Water Plan Fund which provides assistance to develop state water resource issues.
- Kansas Water Plan Atlas: a map of water resources- their conditions and usage
- Past and present reports and publications on water policies, programs, and issues
- Provides a list of programs in Kansas such as GIS mapping assistance, water conservation education, drought monitoring, and streambank assessments
- Reservoir information: current and past data for reservoirs in Kansas
- Holds records from legislature and Governor’s office concerning water resources in Kansas and information from the Ogallala Aquifer Advisory Committee

Kansas Watershed Restoration and Protection Strategy (WRAPS) www.kswraps.org

- Works with stakeholders to protect watershed needs
- WRAPS projects include: development (determine issues), assessment (review watershed needs), planning (establish goals and strategies for the watershed), and implementation (execute and evaluate plan to protect watershed)
- Funding for projects comes from KDHE, EPA Clean Water Act, and a list of other sources
- Provides a list of WRAPS projects in Kansas, WRAPS service providers, and other useful links

Kansas State University, Kansas Water Resources Institute <http://www.kcare.ksu.edu/p.aspx?tabid=921>

- KWRI was established to coordinate and enhance research, extension and teaching activities pertaining to water related to agriculture..
- Uses studies and assessments to evaluate Kansas water resources
- Monitors air quality, water conservation and quality, waste management, soil conservation and quality, and sustainable agriculture methods.

Kansas Drought Watch <http://ks.water.usgs.gov/waterwatch/drought/index.shtml>

- Data and studies on surface water, groundwater, water quality, sediment, water conservation/ use, watershed assessment, and streamflow flood/ drought.
- Provides historical and real-time data

Kansas Alliance for Wetlands and Streams www.kaws.org

- Work to protect and restore wetlands and streams in Kansas.
- Provides support to KS WRAPS projects
- GIS analysis for watershed assessments
- Assists watershed and conservation districts
- Develops workshops and tours to educate people on the importance of protecting the natural environment

Kansas Geological Survey: Geohydrology <http://www.kgs.ku.edu/Hydro/hydroIndex.html>

- Researches water, energy, geology, and geophysics.
- Barometric pressure analysis on water resources, aquifer analysis, Equus beds, river, and pond research.
- Databases: Water Information Management and Analysis System (WIMAS), Water Well Completion Records (WWC5), WIZARD
- Produces current hydrogeologic maps

Kansas Geological Survey: Ogallala Aquifer Information <http://www.kgs.ku.edu/HighPlains/index.shtml>

- Holds information, studies, reports and research about the Western Kansas Ogallala aquifer
- Databases broken down by county

Kansas Ground Water Association www.kgwa.org

- Holds a yearly convention for training and additional information about groundwater.
- Offers continuing education training for contractors
- Provides a list of contractors by county
- Works to bring together government and industry leaders in the water well industry
- Monitors and advocates legislation that affects water wells

Kansas Rural Water Association www.krwa.net

- Mission: To provide leadership, education, and technical assistance to public water and wastewater utilities to enhance the public health and to sustain Kansas' communities.
- Provides technical assistance, financial and resource management for water systems
- Offers training throughout the year and an annual conference to educate professionals on new practices
- Provides a map of rural water districts in the state
- Follows legislative activity involving water resources in Kansas
- Provides GIS/ GPS mapping support

Kansas Section of AWWA <http://www.ksawwa.org/index.htm>

- Mission: To bring together resources, people, and ideas to support safe drinking water for all Kansans
- Provides training opportunities throughout the year
- Holds an annual conference and teleconferences

Kansas Water Congresswww.kswatercongress.org

- Holds an annual conference on water resources issues and provides additional education
- Provides a forum for water resources policy and management in Kansas
- Monitors legislation in Kansas that affects water resources

Kansas Water Environment Associationwww.kwea.net

- Publishes a seasonal journal to provide members information on events
- Holds an annual conference to provide information and technology advancements to professionals
- Provides a list of training opportunities in the state for professionals to remain current
- Provides scholarship assistance to university students planning for a career in environmental sciences

State Association of Kansas Watershedswww.sakw.org

- Represents all watershed districts in Kansas
- Coordinates with the KWO on a Stream Mitigation Guide to change easement regulations
- Publishes a newsletter which provides up to date information on issues surrounding water resources

State Conservation Commissionwww.scc.ks.gov

- Mission: The State Conservation Commission works to protect and enhance Kansas' natural resources through the development, implementation, and maintenance of policies, guidelines, and programs designed to assist local governments and individuals in conserving the state's renewable resources.
- Projects: Water Resources Cost-Share Program, Non-Point Source Pollution Control Program, Riparian and Wetland Protection Program, Kansas Water Quality Buffer Initiative, Watershed Dam Construction Program, Multipurpose Small Lakes Program, Water Rights Purchase Program, Water Rights Transition Assistance Program, Water Supply Restoration Program, Surface-Mining Land Conservation and Reclamation Program
- Directories for watershed and conservation districts

U.S. Geological Survey: Kansas Water Science Center <http://ks.water.usgs.gov>

- Provides “real-time” and historical data on groundwater, streamflow, water quality, etc.
- Produces maps of current state and national water conditions and links to other useful maps
- Has studies on groundwater, surface water, water quality, sediment, water use, watersheds, and streamflow
- Provides information on local, state, and national water related agencies
- The Kansas Water Science Center produces several relevant publications on water resources

Wetlands & Wildlife National Scenic Bywaywww.kansaswetlandsandwildlifescenicbyway.com

- Gives information on wetlands (Cheyenne Bottoms, Quivira National Wildlife Refuge, Arkansas' River Great Bend), wildlife, history of the area
- Lists upcoming events in the wetlands

National

American Water Works Association

www.awwa.org

- Mission: AWWA is the authoritative resource on safe water, providing knowledge, information and advocacy to improve the quality and supply of water in North America and beyond. AWWA advances public health, safety and welfare by uniting the efforts of the full spectrum of the water community.
- Offers a variety of resourceful publications for water professionals (water utilities)
- Monitors legislation at the federal level and provides reports
- Provides standards and best practices for professionals to follow to ensure safe, quality drinking water

American Water Resources Association

www.awra.org

- Mission: To advance multidisciplinary water resources education, management and research
- Posts a calendar of events for AWRA and non AWRA events
- Publishes several journals on water resources for members to stay up to day on current topics

Environmental Protection Agency

www.epa.gov/water

- Drinking water: water quality standards, how to prepare for natural disaster, information on private wells, and general information about drinking water
- Education and Training: provides a list of opportunities to learn more about water, wastewater, etc.
- Grants: provides a list of grants and other funding opportunities for water management
- Laws and regulations: database with up to date laws and regulations regarding water resources
- Provides pollution prevention information, best practices to protect water resources from pollution
- Water infrastructure: infrastructure programs to promote clean and sustainable practices

EPA Envirofacts Data Warehouse

www.epa.gov/enviro/index.html

- Search tool for environmental information (air, land, water, waste, toxics, radiations, facilities, compliances)
- Research microbial levels of water supply for cities serving at least 100,000
- Review companies who have permits to dispose of waste in rivers and monitor the waste (also NPDES permits database)
- Public drinking water safety search –review which systems have violated EPA standards
- Database systems to search for waste in a specific area, hazardous waste sites, hazardous waste handlers

Federal Emergency Management Association (FEMA) www.fema.gov

- Helps emergency managers prepare, respond, recover, mitigate, and reduce risk for emergencies and disasters.
- Grants: provides a variety of grants for emergency management
- Provides preparedness maps of emergencies, hazards, and disasters

Interstate Council on Water Policy

www.icwp.org/cms

- Provides a voice for non-Federal governments and other jurisdictions on national water policy
- A committee examines water data and collection methods
- A committee monitors federal legislation and testimony on water issues
- Holds monthly and annual meetings for members and other interested parties (annual meeting is a conference)

National Association of Conservation Districts www.nacdnet.org

- Represents conservation districts at a national level
- Provides updated information to members through various publications and news releases
- Hosts an annual conference to provide networking and educational opportunities for professionals
- Has a database of resources to help conservation districts manage
- Hosts a Stewardship Week to help others become more involved in education and conservation
- Helps develop conservation policy through the organization and through congressional testimony

National Drought Mitigation Center www.drought.unl.edu

- Mission: The National Drought Mitigation Center (NDMC) helps people and institutions develop and implement measures to reduce societal vulnerability to drought, stressing preparedness and risk management rather than crisis management
- Current projects include: estimating the impacts of complex climactic events (with NOAA), integrating enhanced GRACE water storage data (with NASA), soil moisture research project (with High Plains Regional Climate Center)
- Provides news and other relevant information to members through regular publications
- Provides outreach to stakeholders to ensure quality research can be conducted through the right tools
- Provides information on basic drought information, forecasting, and climatology, and the Dust Bowl
- Has tools to monitor drought at local, state, and national level
- Drought planning tools and processes are available as well for various sectors
- Has a page of resources for children to learn and understand droughts
- Offers international drought planning and other activities

National Groundwater Association www.ngwa.org

- Purpose: to provide guidance to members, government representatives, and the public for sound scientific, economic, and beneficial development, protection, and management of the world's groundwater resources
- Monitors national legislative action and EPA guidelines for groundwater
- Monitors groundwater quality and levels
- Promotes a variety of events to educate professionals about groundwater issues
- Offers publications for professionals for groundwater, monitoring
- Provides certification and training to contractors and engineers
- Has information on best management practices, government, and education
- One page has basic groundwater knowledge for industry professionals

National Resources Conservation Service www.ks.nrcs.usda.gov

- Mission: to provide products and services that enable people to be good stewards of the Nation's soil, water, and related natural resources on non-Federal lands
- Shares news articles concerning conservation with members
- Programs: agriculture water enhancement program, conservation innovation grants, environmental quality program, watershed protection and flood prevention program, wetlands reserve program
- Provides information on technical resources and partner organizations

National Rural Water Association www.nrwa.org

- Advocates for water and wastewater utilities and rural water
- Provides a voice for utilities in Congress
- Offers education and training for professionals
- Produces a weekly newsletter, podcasts, webinars
- Posts conferences and training opportunities for each state

National Water Resources Association www.nwra.org

- Mission: to advocate federal policies, legislation, and regulations promoting protection, management, development, and beneficial use of water resources
- Hosts an annual conference for professionals, lists other meetings from associate organizations
- Provides the organization's position on a variety of issues relating to water

United States Army Corps of Engineers, Tulsa District <http://www.swt.usace.army.mil/>

- Mission: to provide vital public engineering services in peace and war to strengthen our Nation's security, energize the economy, and reduce risks from disasters
- Provides services to the public, military, environment, emergency relief
- Offers support for project safety, permitting, management, construction, etc.
- Assists in creating maps and charts to help new projects develop
- Produces publications on safety, regulations, systems, and standards

United States Bureau of Reclamation www.usbr.gov/main/water

- Produced a large reclamation study in 2007
- Database to search for dams, powerplants, and other water projects
- Provides daily water data for lakes and reservoirs
- Offers programs for water conservation, environment, emergency closure, concessions management
- Provides information about recreation, water supply, dams, projects and powerplants managed USBR

United States Department of Agriculture <http://www.usda.gov/wps/portal/usda/usdahome>

- Mission: We provide leadership on food, agriculture, natural resources, and related issues based on sound public policy, the best available science, and efficient management.
- Houses Natural Resources Conservation Service
- Areas of interest: food safety, farm and agriculture, natural resources and environment, rural development
- National Water Management Center deals with water issues (water and watersheds)

United States Geological Survey www.usgs.gov

- Develops maps, images, and other publications and related material
- Provides policymakers and the public with knowledge of natural hazards and their potential threats, and helps develop preparedness strategies
- Shares news releases and stories and relevant legislation to professionals
- Provides an earth science library with a searchable database
- Collects and provides data from water resources research

Report of the WRC Executive Officer

Kansas Joint Committee on Energy and Environmental Policy

WRC staff was requested to find and present information on whether or not “hydraulic fracturing,” was being performed over the Equus Beds ground water formation to the Kansas Joint Committee on Energy and Environmental Policy on October 17th, 2011.

Hydraulic fracturing is a technique used in oil and gas production that has had some national attention after it has caused serious ground water contamination issues in the eastern part of the United States. Hydraulic fracturing has recently drawn attention to Kansas after a recent spike in letters that are being sent to land owners from oil and gas companies to lease mineral rights in South-Central Kansas, and an uncertainty of whether or not hydraulic fracturing is being use as a technique for production, and an uncertainty of chemicals that are being used in the hydraulic fracturing process.

WRC staff contacted officials from the Kansas Corporation Commission (KCC) Conservation Division to find information on hydraulic fracturing. KCC officials identified recent “intent to drill,” applications, and directed staff to contact the Kansas Geological Survey, who have an interactive map and search engines that produced geo-spatial information on the location of oil and gas production sites.

WRC staff found that there were no identified oil and gas production sites over the Equus Beds that are using hydraulic fracturing, but found information relating to hydraulic fracturing and some inconsistencies in recent “intent to drill,” applications. Findings included that oil and gas producers do not have to disclose certain information in their “intent to drill,” applications that are reviewed and approved by the KCC.

One piece of information that is not disclosed in their application is whether or not they are going to be using hydraulic fracturing techniques in their production process. They must, however disclose if they are “horizontally drilling,” and must follow specific regulation pertaining to the technique, but “vertical drilling,” applicants do not disclose hydraulic fracturing information until they have completed their drilling process. The other lacking piece of information is if an oil and gas producer uses hydraulic fracturing, they do not have to disclose what chemicals are being used, even after the production process is completed.

Update on REAP Regional Water Tour

At the September 12th REAP WRC meeting, an outline for a regional bus tour developed by the WRC Technical Sub-Committee was presented, discussed, and a motion was made to approve developing a regional water tour concept. The outline called for a regional water tour focusing on how the Kansas Star Casino’s development is impacting water resources in South-central Kansas.

REAP WRC staff contacted representatives from the City of Mulvane to discuss the regional water tour concept and further develop the plan. Due to the timing, construction deadlines, and decision making processes for all the projects going on in and around the City of Mulvane, it was recommended that the tour be postponed to early 2012.

The WRC Technical-Subcommittee met on September 7th to discuss coordinating a bus to in our region that aligns with the educational priorities of the 2011 WRC work plan. It was discussed that the development of the Kansas Star Casino has had a significant impact on regional water supply, wastewater, stormwater, as well as an impact on future economic development due to shallow groundwater tables. All aspects of regional water resources were being impacted by a large economic development site in South-central Kansas, and should be further researched by the WRC.

REAP Listening Tour

The REAP Legislative Committee kicked off its listening tour in Newton on **August 11**. The tour is intended to help the Committee connect REAP with the communities in the region while allowing REAP members to identify issues that are important to individual communities and could be beneficial to the region. The Committee has noted that although many issues may not be of regional importance, if they are important to that community REAP should be aware and supportive as long as the issue does not hurt any other community in the region.

The first stop focused on communities in Harvey and McPherson counties and followed it up with a stop in Hutchinson on **August 26** that focused on communities in Kingman and Reno counties. The third stop was in El Dorado on **September 23**. The fourth stop was held in Wellington and focused on Cowley, Harper and Sumner counties on **October 27**. The final stop has been planned to be held in conjunction with the Sedgwick County Association of Cities monthly meeting in Kechi on **November 12** and will focus on Sedgwick County.

Milwaukee Water Council Summit

On September 19th and 20th The Milwaukee Water Summit hosted hundreds of water professionals from across the world. Attendees came to learn more about how water use impacts energy, economics and the environment. One track at the conference examined watersheds. In the international hydrology cooperation track, attendees learned how creating partnerships with universities, private sector, and governments coordinate action to address water resources.

There were great examples of how communities can address storm water solutions together. Mr. Gary Belan, American Rivers, shared successful examples of storm water management across the country. Watershed governance was examined by collaboration between public, private, and nonprofit organizations, and in federal, state, and local governments as well.

The Global Water/ Energy Nexus was another track used in the conference. Optimizing water, energy, and climate through policies and planning provided a meaningful dialogue between various stakeholders on how to take steps towards developing innovative water policies. Integration and stakeholder engagement were two topics discussed.

A panel looked at water/energy technology. The panel answered questions regarding how to attract new employees, how to incorporate innovative technologies, and what partnerships in water and energy technology fit the needs of developing sustainable water infrastructure. For conference presentations or details, please contact Dane Baxa at dane.baxa@wichita.edu or at 316-978-6638.

ICMA 97th Annual Conference

The International City and County Managers Association (ICMA) Annual Conference was held September 18-21 in Milwaukee, Wisconsin. The conference theme was “fresh water, fresh ideas.” There were several conference sessions relating to water resources. Some of the sessions discussed the sustainable innovations in Milwaukee’s water sector.

One session highlighted how private industry relating to water resources, government entities relating to water regulations, and regional colleges and universities researching freshwater science came together to define how they could elevate their “Water Cluster,” as a world leading regional economy of fresh water science, manufacturing, and policy making, and help make Milwaukee a more sustainable community.

For a complete list of conference presentations or details, please visit <http://icma.org/en/conference/welcome> or contact Dane Baxa at dane.baxa@wichita.edu or at 316-978-6638.