



WICHITA STATE
UNIVERSITY

FAIRMOUNT COLLEGE OF
LIBERAL ARTS AND SCIENCES

Hugo Wall School of Urban
and Public Affairs

Revised
General Economic Condition and
Performance Indicators

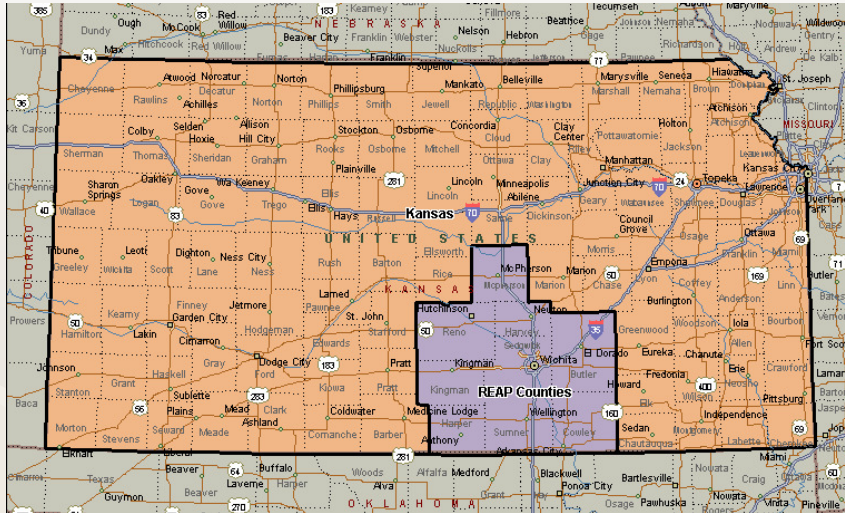
Prepared for
The Regional Economic Area Partnership (REAP)
Economic Development Committee (EDC)

by
John D. Wong, J.D. Ph.D.
May 20, 2010

Strategic Analysis

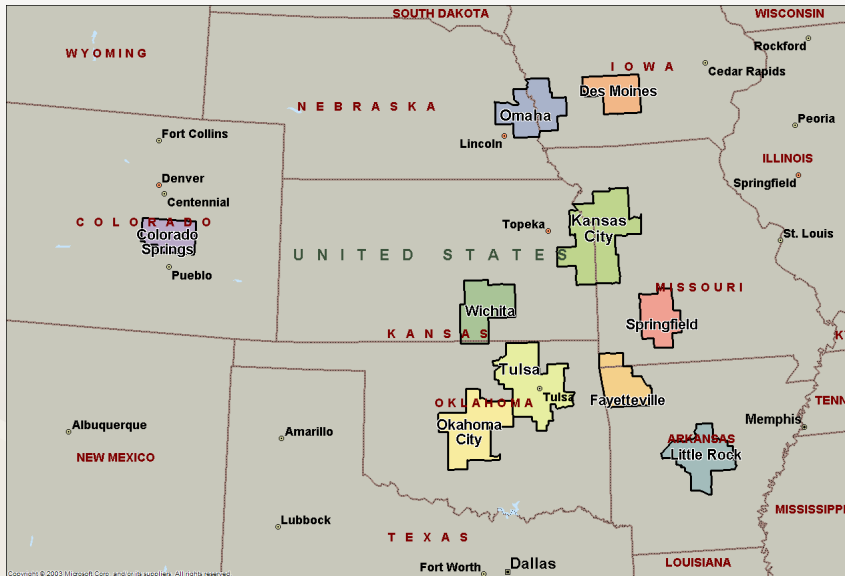
- Audit economic environment
 - External environment
 - Opportunities
 - Threats
 - Internal environment
 - Strengths
 - Weaknesses
- Audit local resources
- Define the *goals*
- Identify the *problems* that frustrate fulfillment of these goals
- Identify *alternative solutions* to the problems that will achieve the goals
- Compare the *relative merits* of each alternative as a solution to the problem

REAP Counties



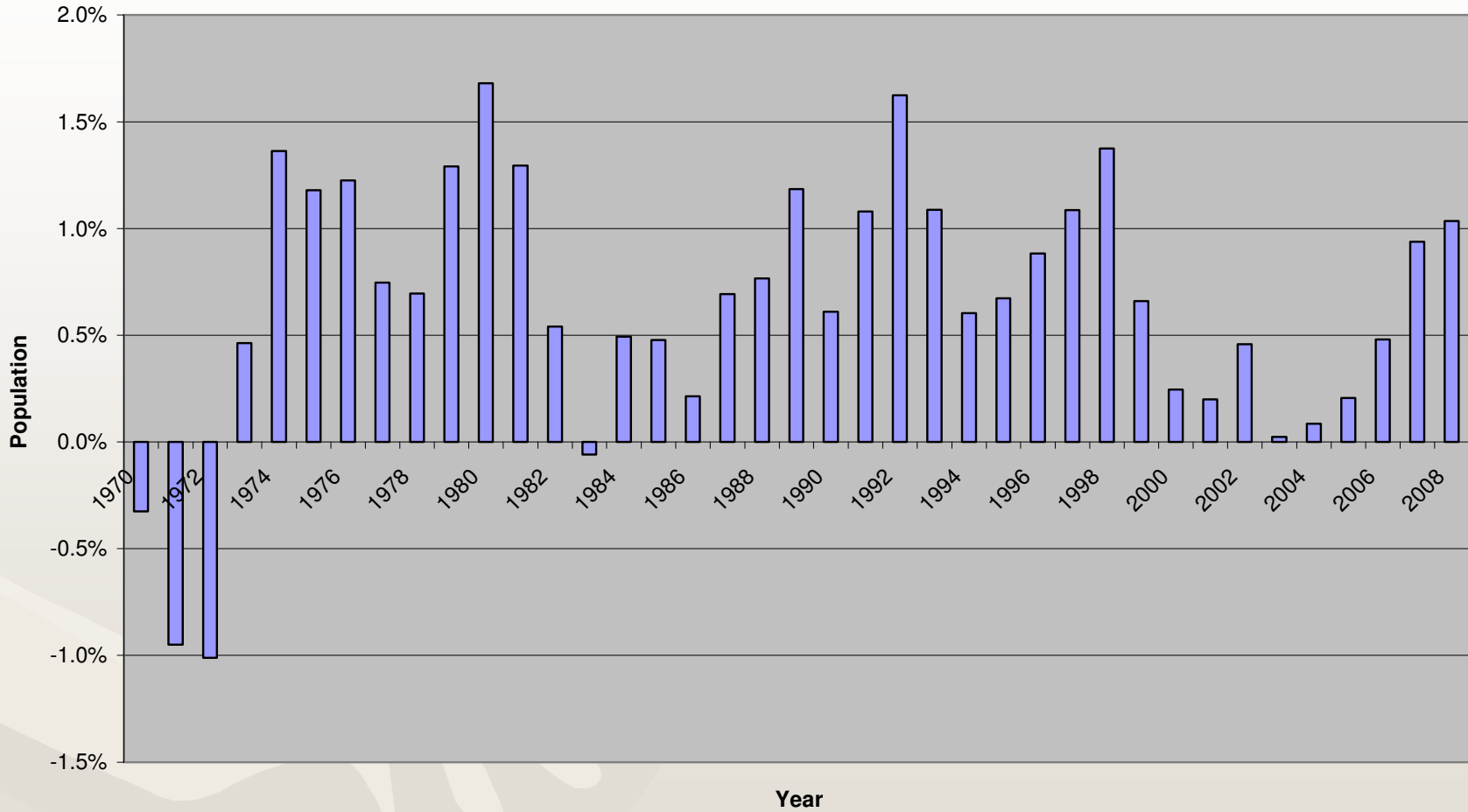
County	Population (BEA, 2008)	Percentage Change	Per Cap. Income (BEA, 2008)	Percentage Change
Butler	63,452	0.9%	\$36,835	2.6%
Cowley	33,988	-0.4%	\$32,796	2.7%
Harper	5,772	0.5%	\$39,477	10.8%
Harvey	33,768	0.4%	\$35,599	3.7%
Kingman	7,637	-1.7%	\$37,100	9.3%
McPherson	28,814	-0.7%	\$38,563	4.3%
Reno	63,227	0.3%	\$31,566	3.9%
Sedgwick	482,317	1.5%	\$39,847	2.8%
Sumner	23,668	-0.4%	\$37,686	10.9%
REAP	742,643	1.0%	\$38,219	3.3%

Peer Comparison Areas

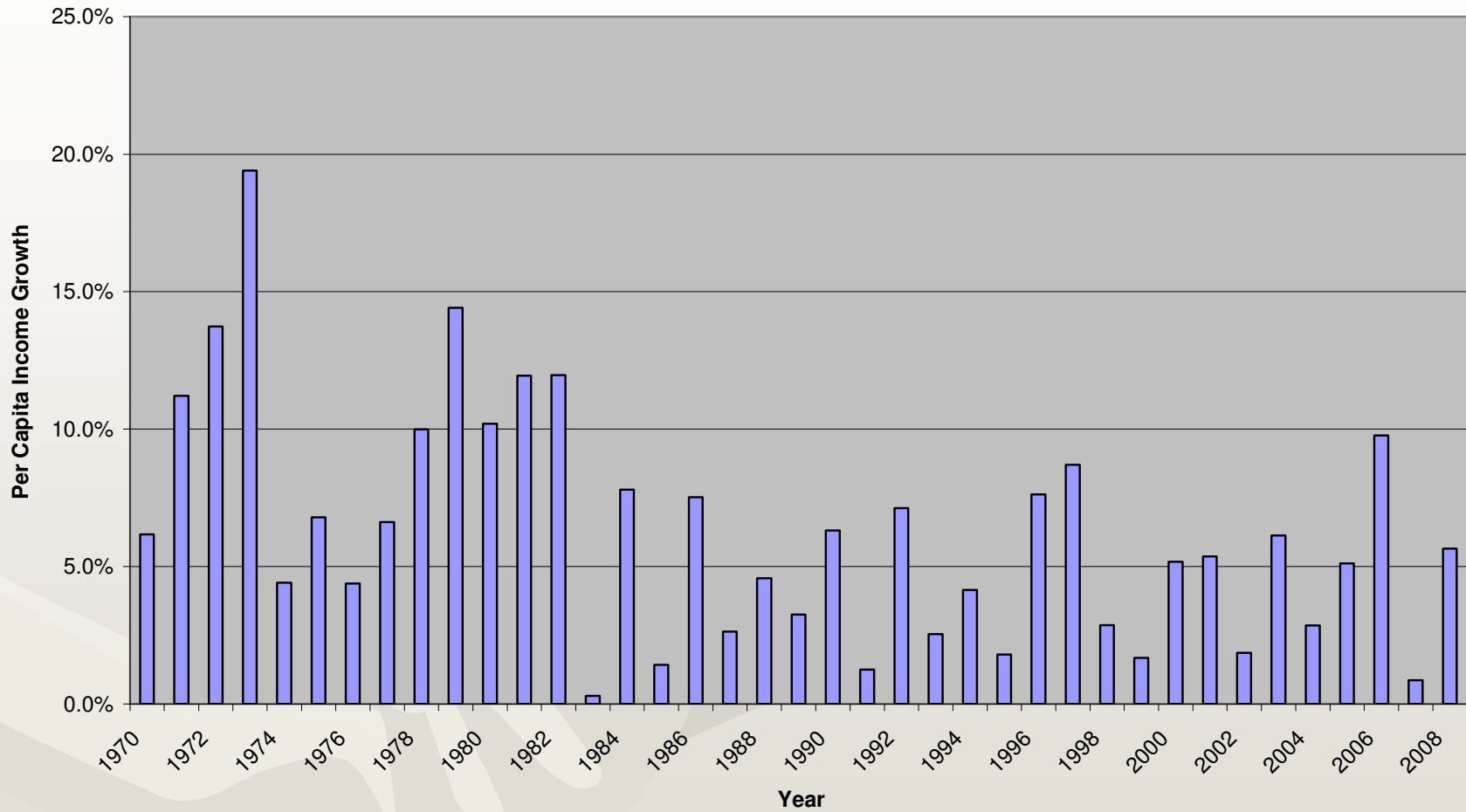


MSA	Region	Population (BEA, 2008)	Percentage Change	Per Cap. Income (BEA, 2008)	Percentage Change
Colorado Springs	Rocky Mountains	616,975	1.6%	\$38,221	2.1%
Des Moines	Plains	554,101	1.8%	\$42,506	1.8%
Fayetteville	Southeast	455,408	2.5%	\$32,537	0.5%
Kansas City	Plains	2,046,083	1.7%	\$40,396	1.4%
Little Rock	Southwest	675,921	1.4%	\$39,012	-0.2%
Oklahoma City	Southwest	1,207,519	1.4%	\$38,882	4.6%
Omaha	Plains	839,265	1.2%	\$43,012	2.0%
Springfield	Plains	426,125	1.5%	\$31,496	1.7%
Tulsa	Southwest	916,037	1.1%	\$40,981	3.7%
Wichita	Plains	603,205	1.3%	\$39,207	3.1%
Peer Areas		8,340,639	1.5%	\$40,059	2.6%

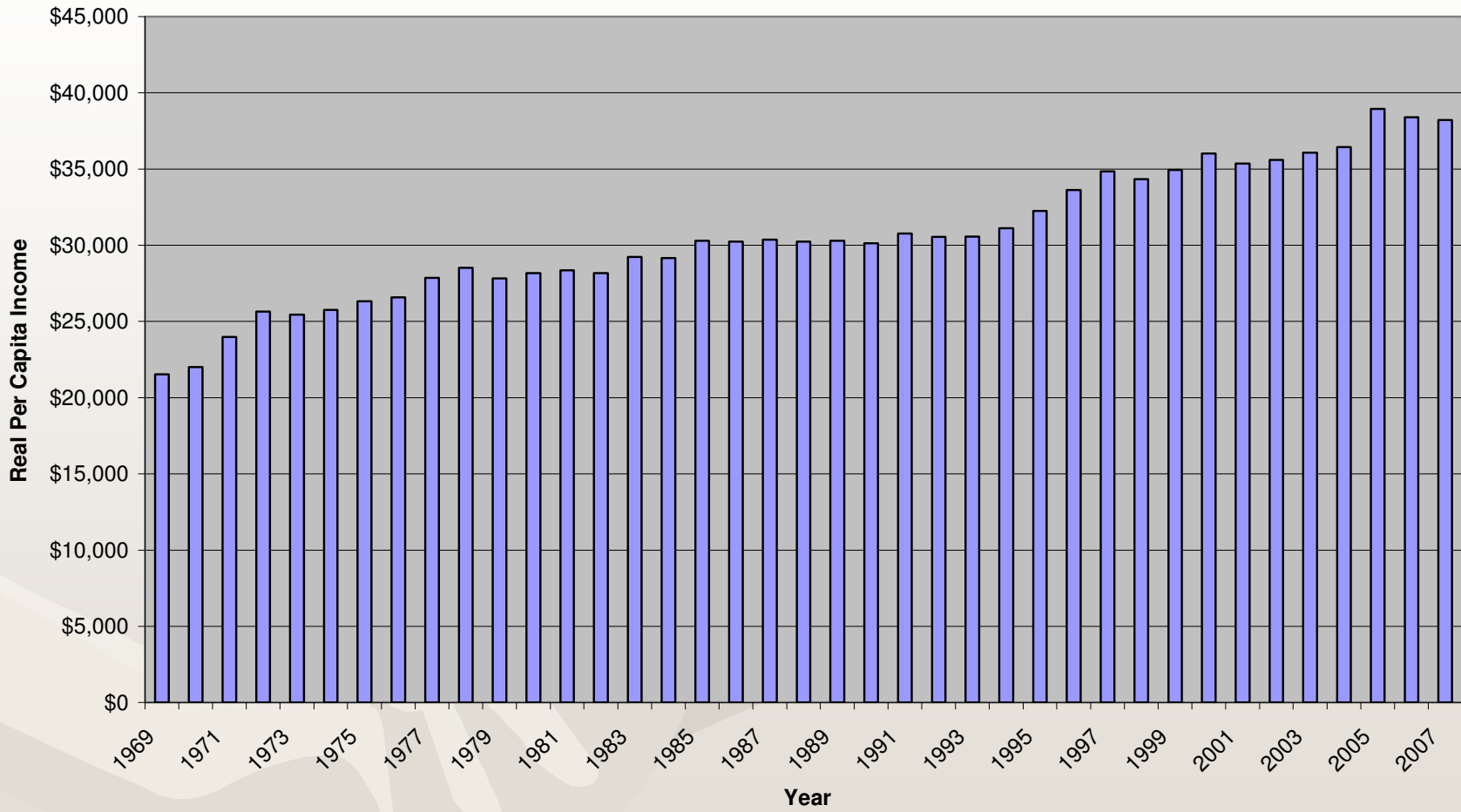
**Population Growth
Regional Economic Area Partnership (REAP)
1970-2008**



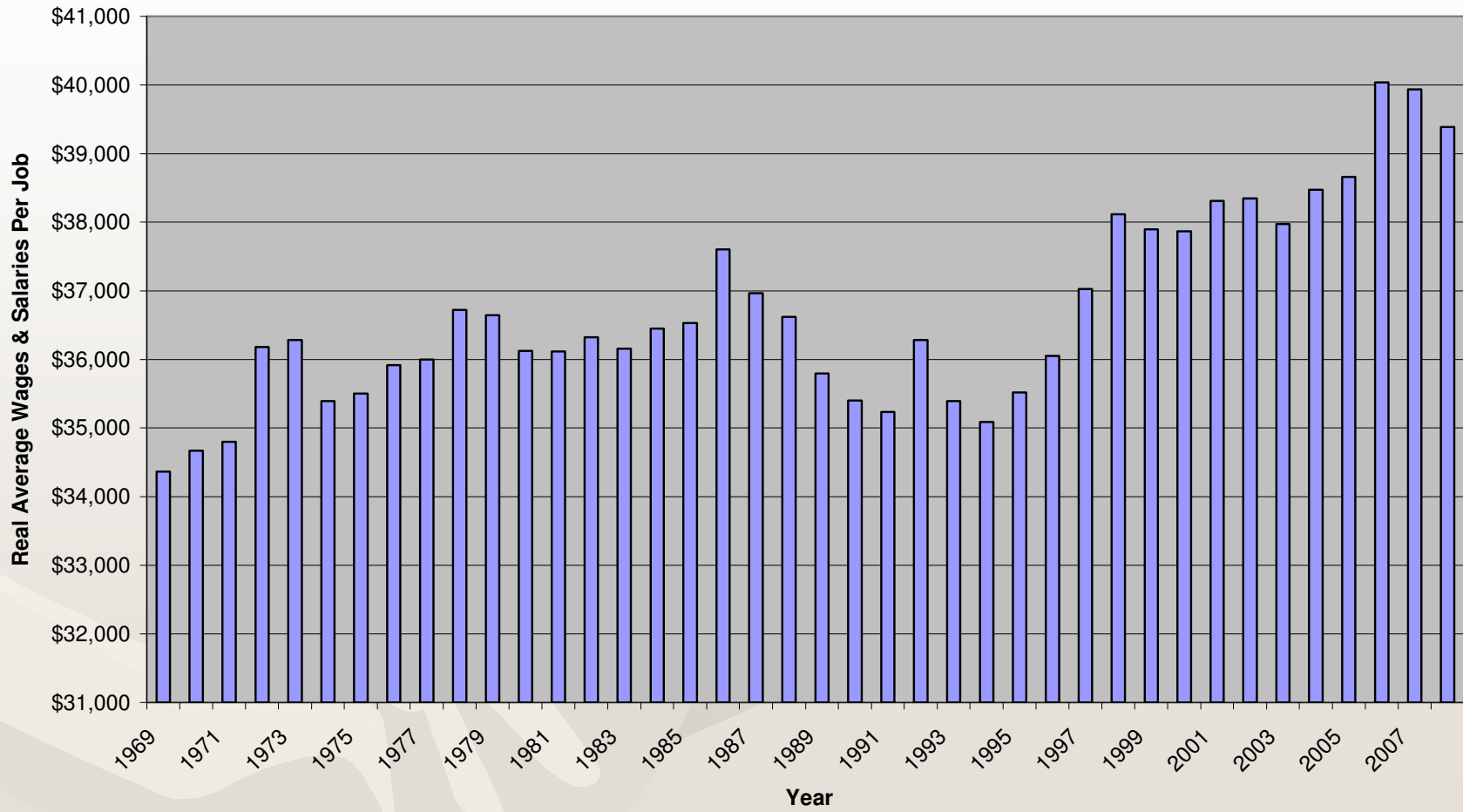
**Per Capita Income Growth
Regional Economic Area Partnership (REAP)
1970-2008**



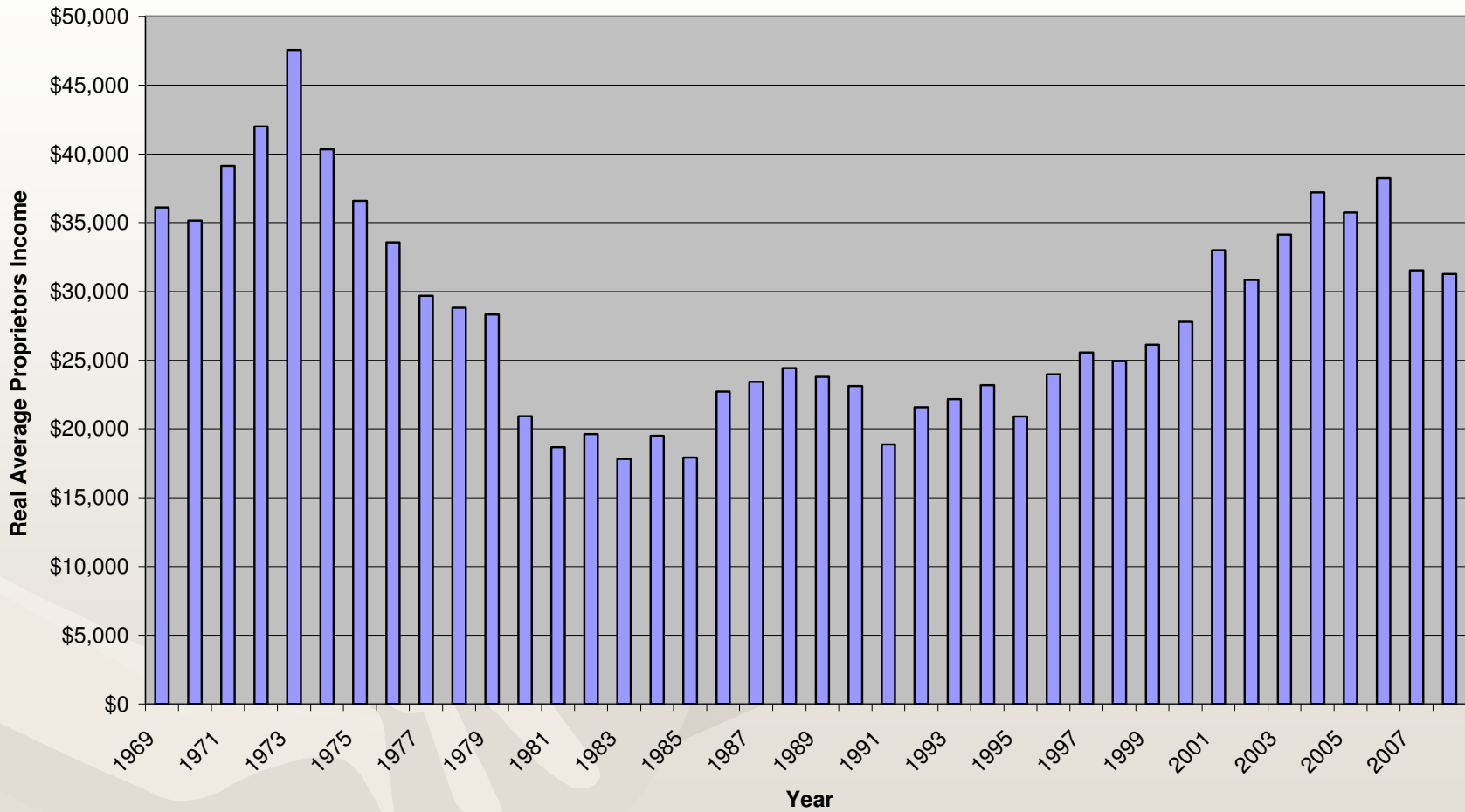
Real Per Capita Income
Regional Economic Area Partnership (REAP)
1970-2008
2008=100



**Real Average Wages & Salaries Per Job
Regional Economic Area Partnership (REAP)
1969-2008
2008=100**



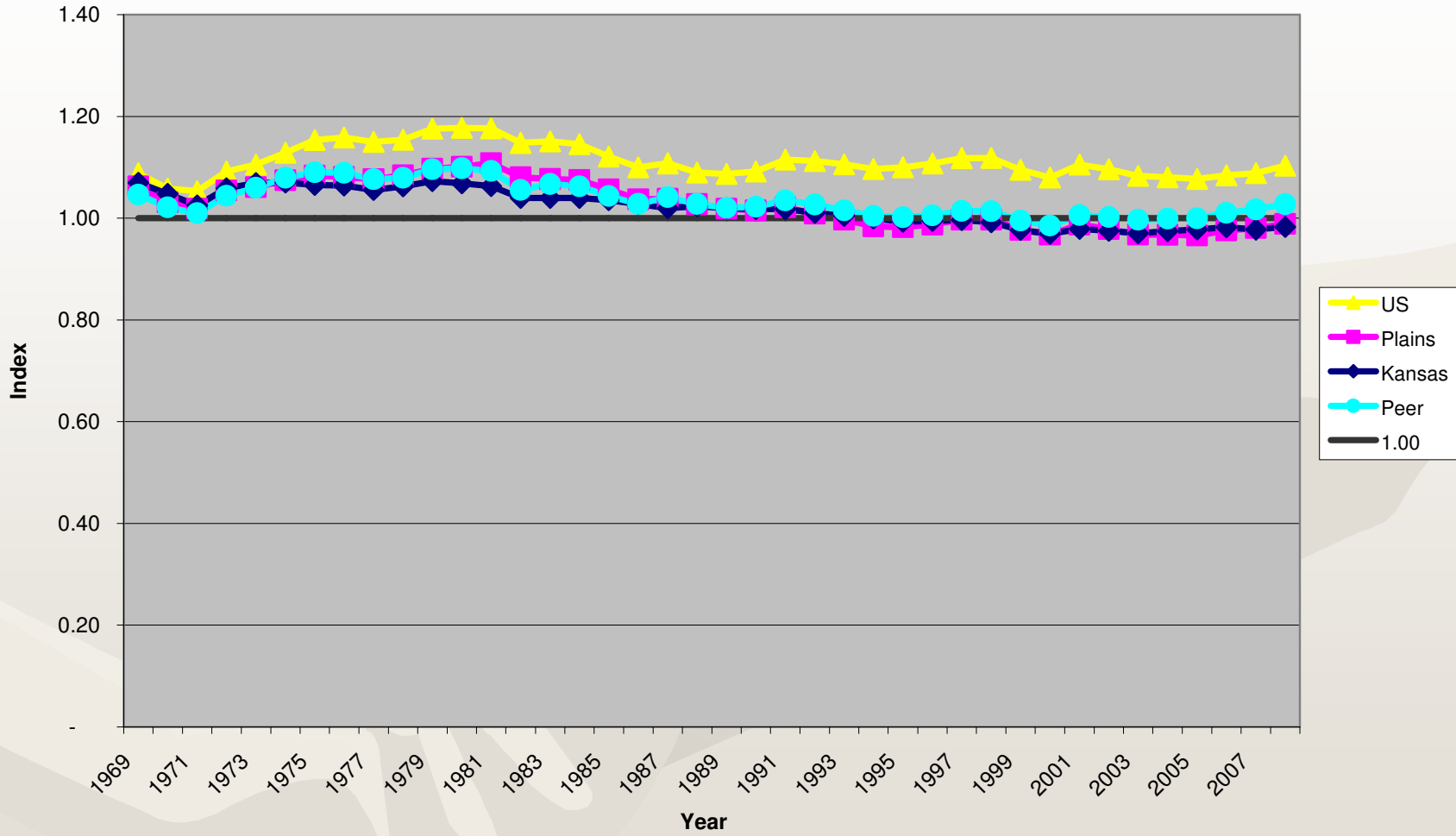
Real Average Proprietors Income
Regional Economic Area Partnership (REAP)
1969-2008
2008=100



Employment Index

$$\text{Employment Index} = \frac{\frac{\text{Local Employment}}{\text{Local Population}}}{\frac{\text{Benchmark Employment}}{\text{Benchmark Population}}}$$

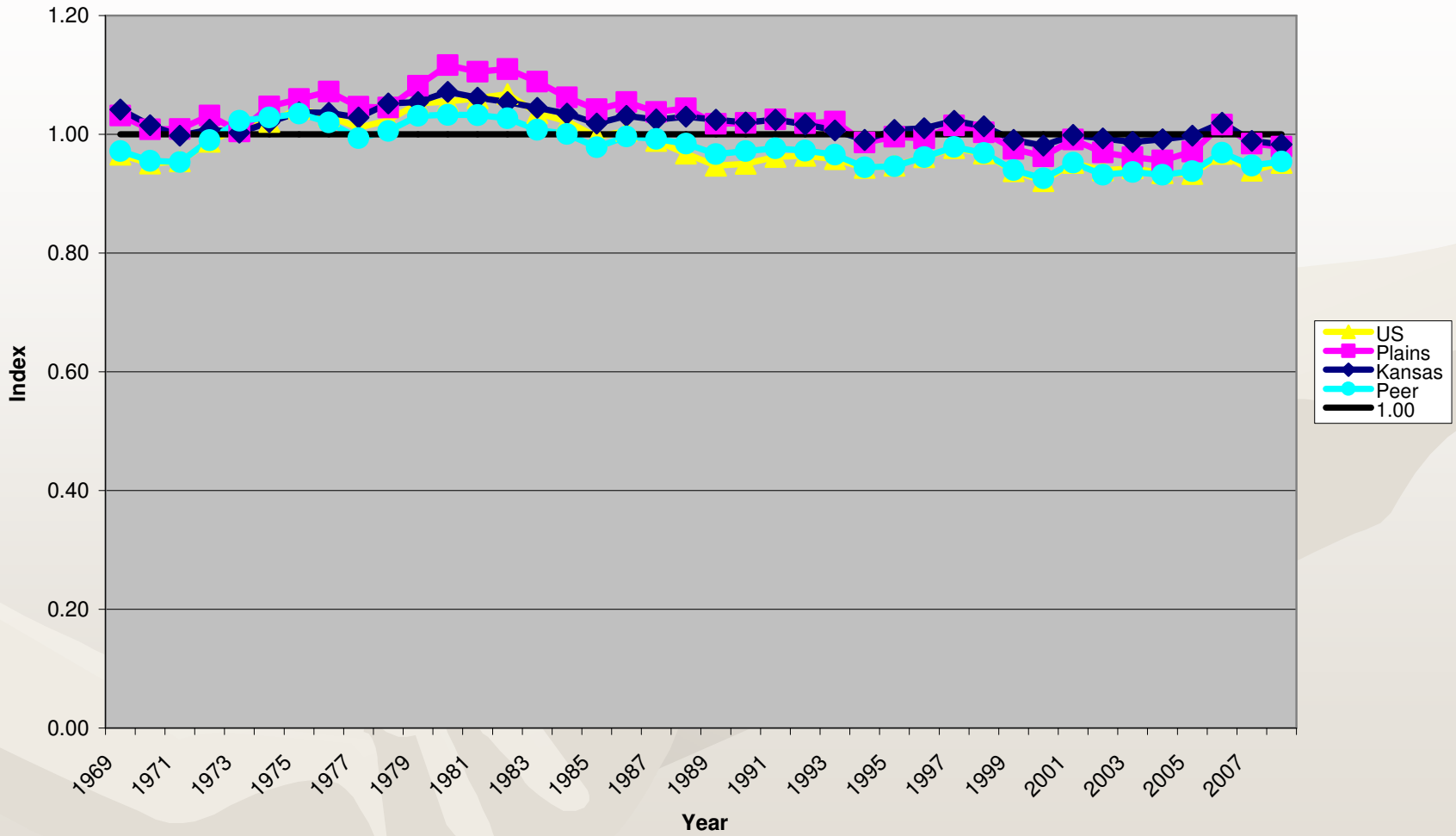
EMPLOYMENT INDEX 1969-2008



Personal Income Index

$$\text{Personal Income Index} = \frac{\frac{\text{Local Personal Income}}{\text{Local Population}}}{\frac{\text{Benchmark Personal Income}}{\text{Benchmark Population}}}$$

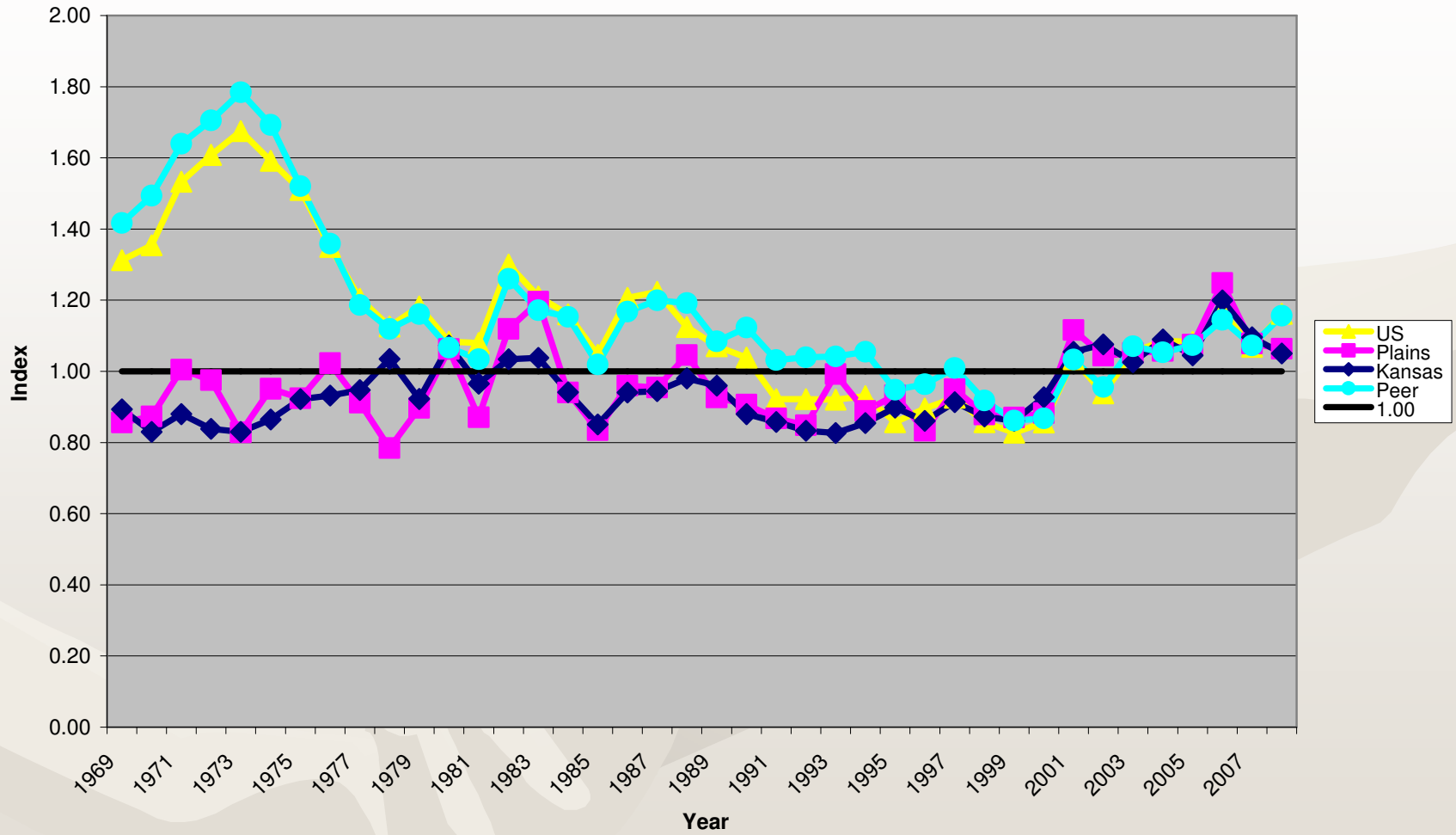
PERSONAL INCOME INDEX 1969-2008



Proprietor Income Index


$$\text{Proprietor Income Index} = \frac{\frac{\text{Local Proprietor Income}}{\text{Local Population}}}{\frac{\text{Benchmark Proprietor Income}}{\text{Benchmark Population}}}$$

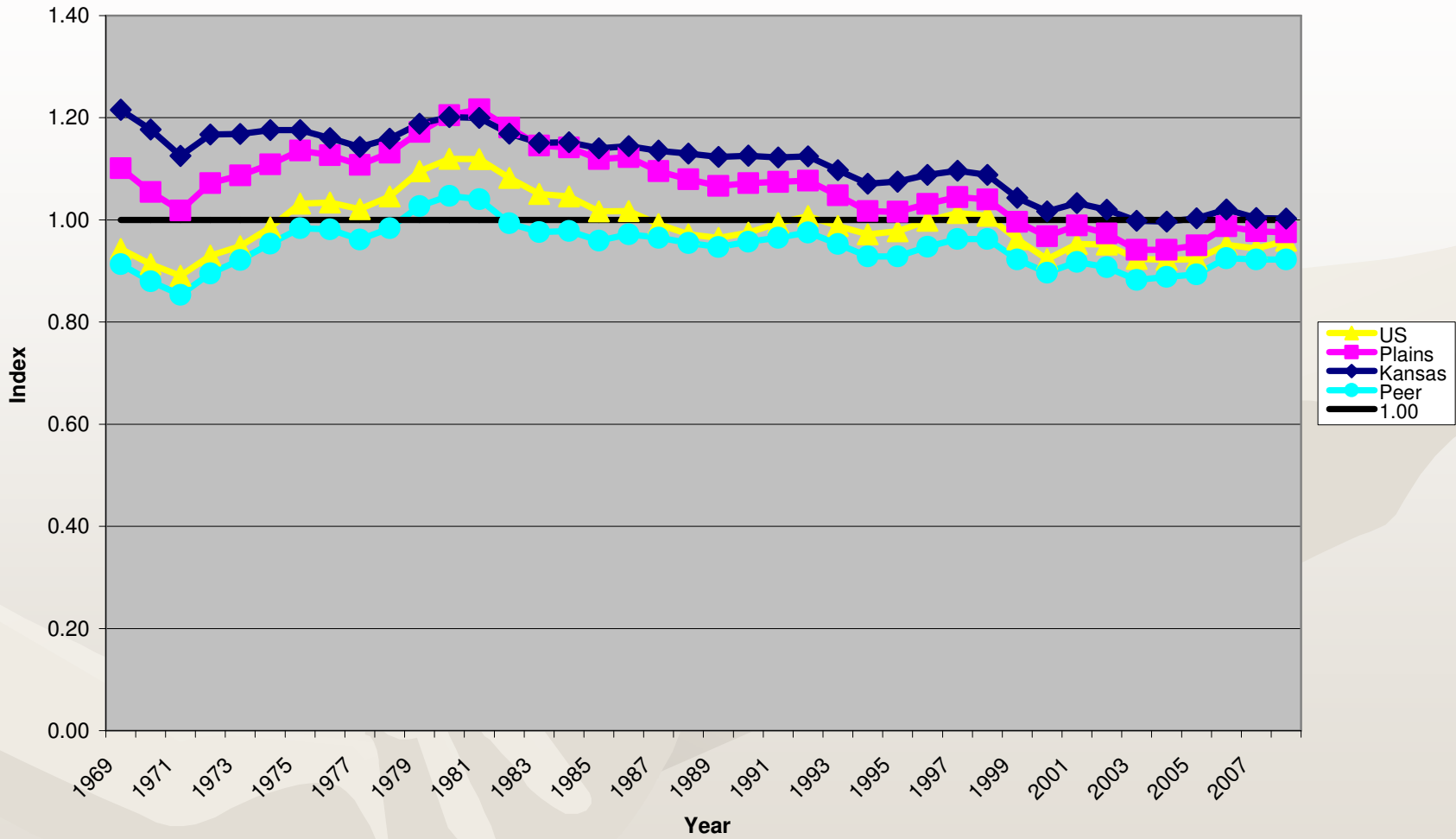
PROPRIETORS INCOME INDEX 1969-2008



Earnings Index

$$\text{Earnings Index} = \frac{\frac{\text{Local Earnings}}{\text{Local Population}}}{\frac{\text{Benchmark Earnings}}{\text{Benchmark Population}}}$$

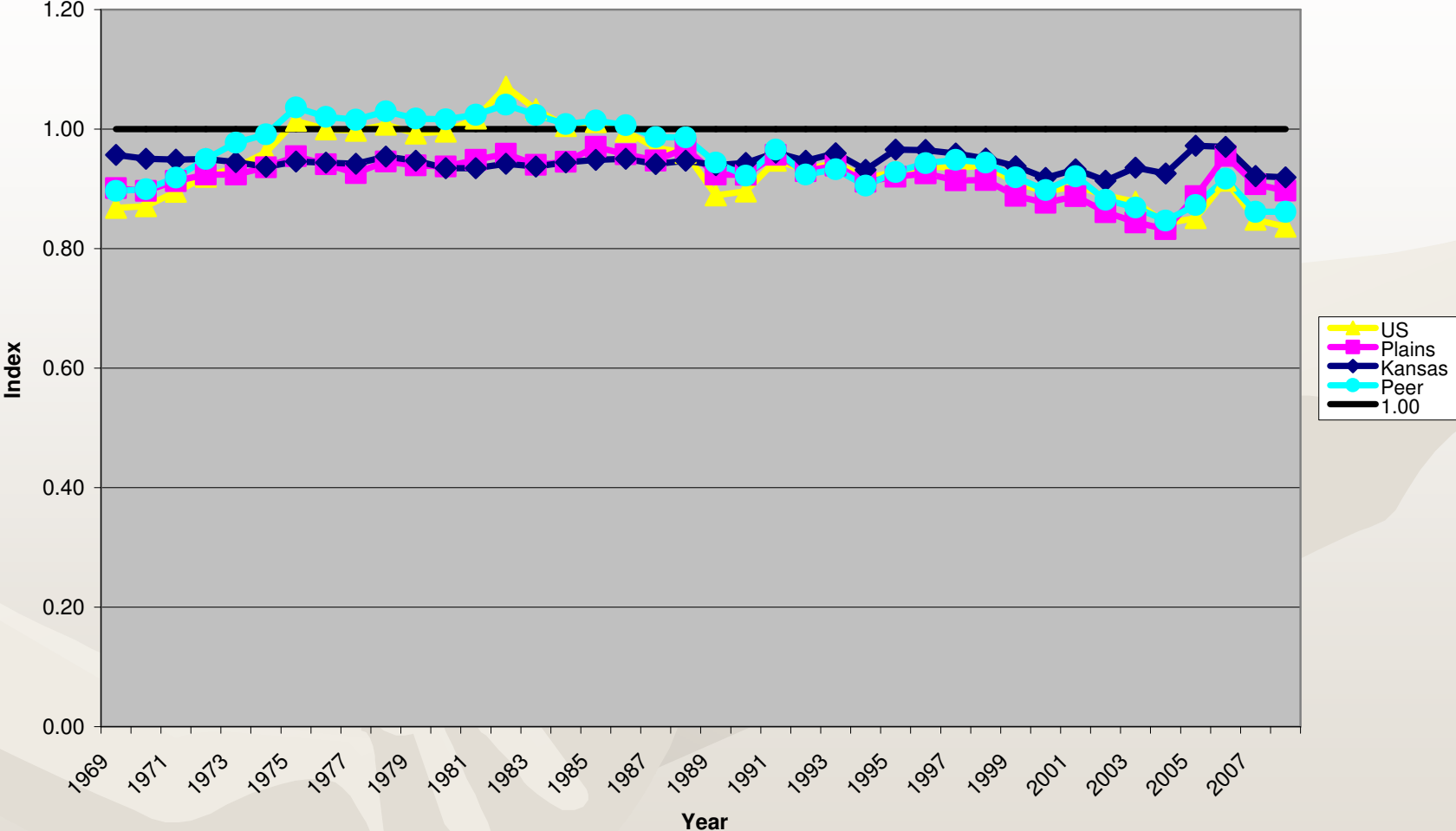
EARNED INCOME INDEX 1969-2008



Wealth Index

$$\text{Wealth Index} = \frac{\frac{\text{Local Wealth}}{\text{Local Population}}}{\frac{\text{Benchmark Wealth}}{\text{Benchmark Population}}}$$

WEALTH INCOME INDEX
1969-2008

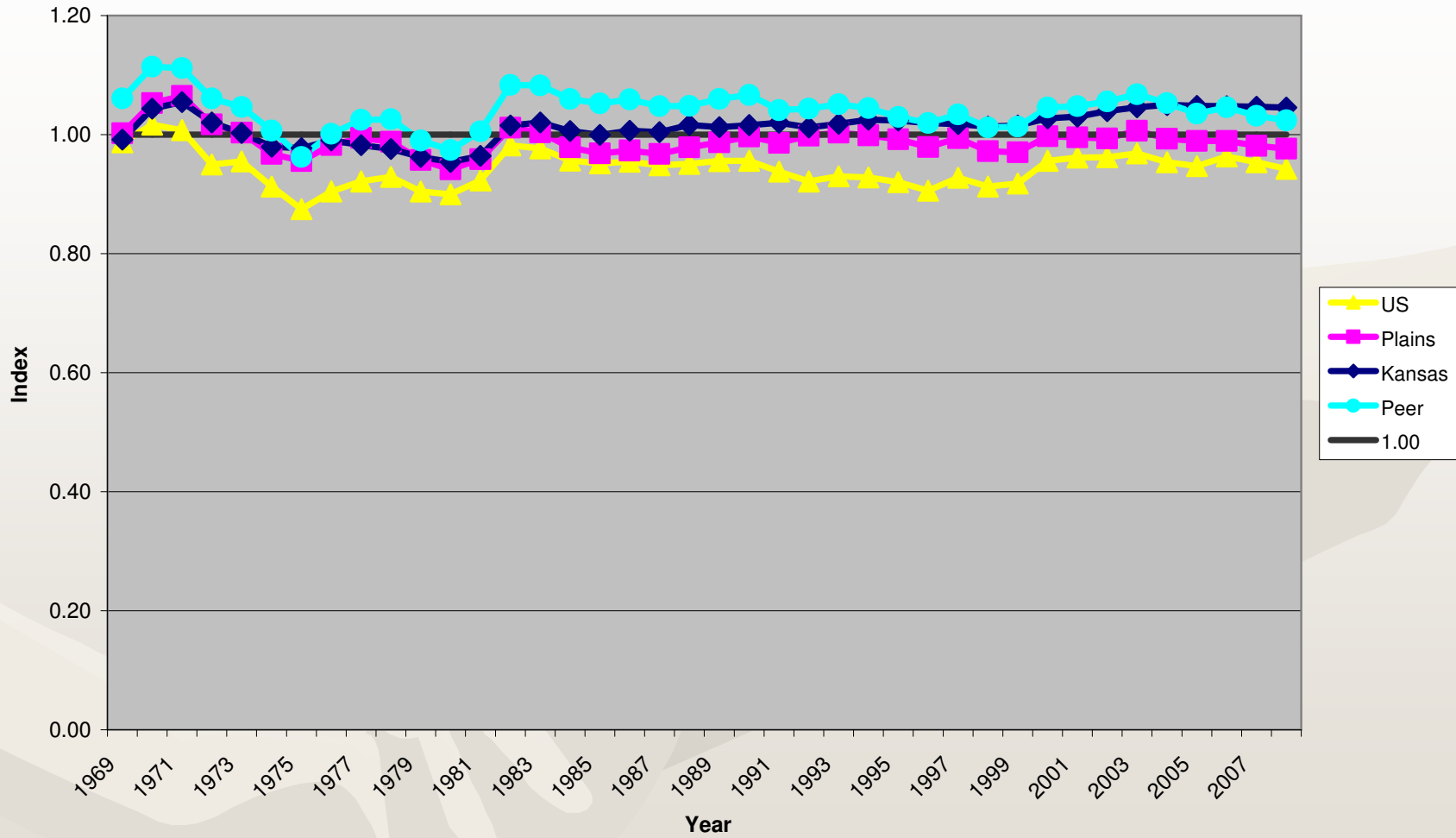


Transfer Income Index



Transfer Income Index =
$$\frac{\frac{\text{Local Transfer Income}}{\text{Local Population}}}{\frac{\text{Benchmark Transfer Income}}{\text{Benchmark Population}}}$$

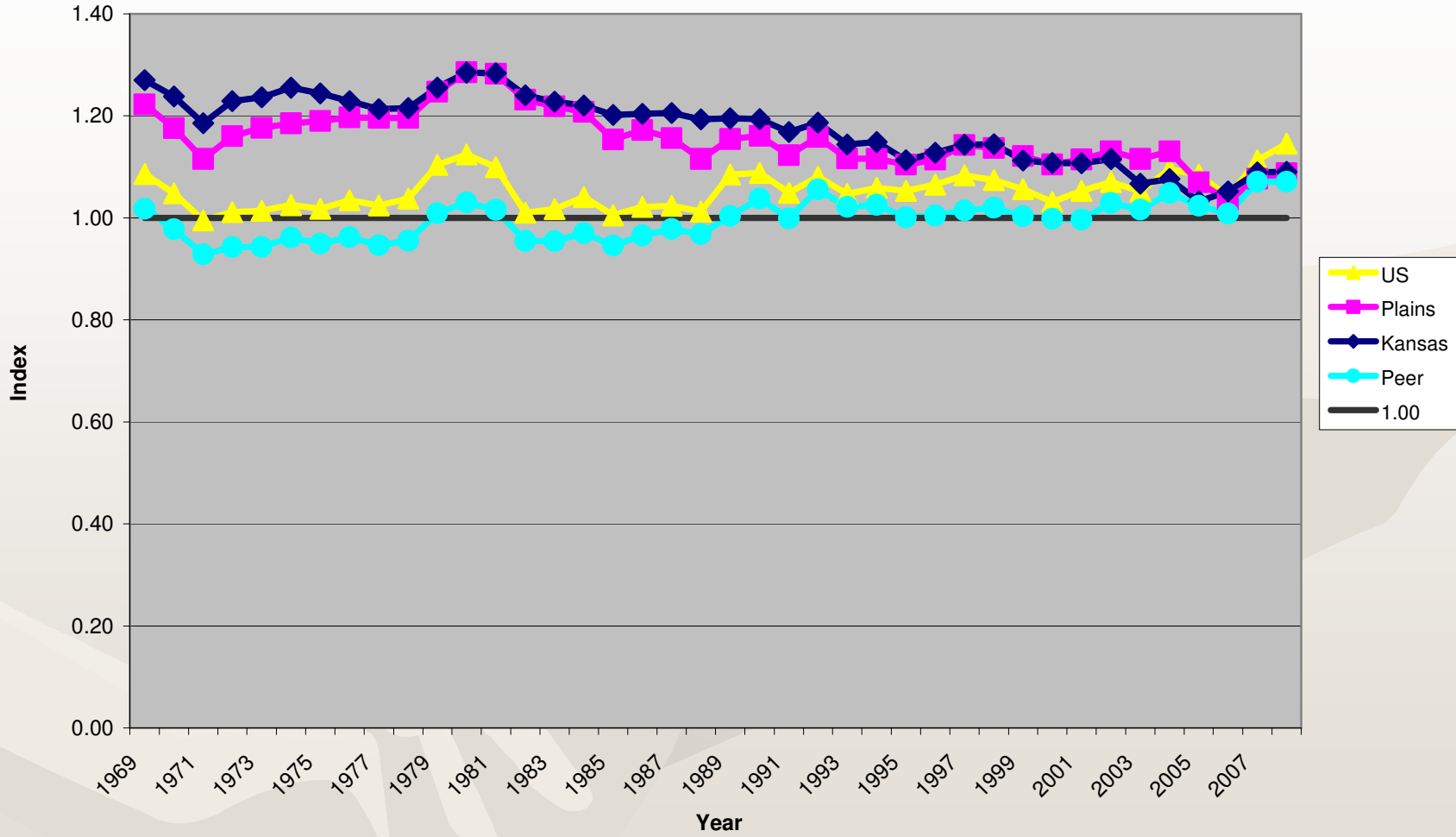
TRANSFER INCOME INDEX 1969-2008



Active/Passive Income Index


$$\text{Active/Passive Income Index} = \frac{\frac{\text{Local Active Income}}{\text{Local Passive Income}}}{\frac{\text{Benchmark Active Income}}{\text{Benchmark Passive Income}}}$$

ACTIVE/PASSIVE RATIO 1969-2008

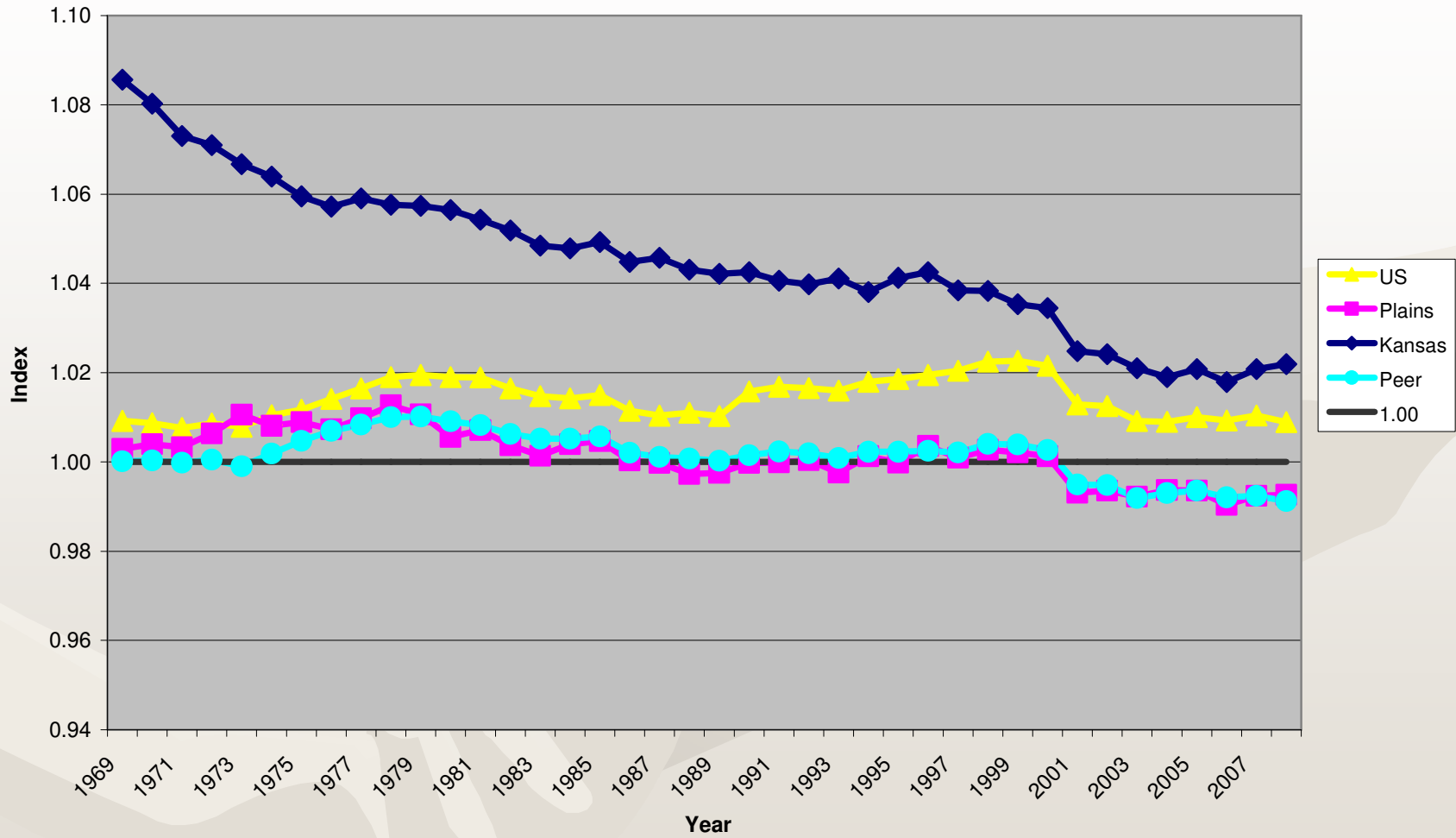


Work/Residence Income Index



Work/Residence Income Index =
$$\frac{\frac{\text{Local Place of Work Income}}{\text{Local Place of Residence Income}}}{\frac{\text{Benchmark Place of Work Income}}{\text{Benchmark Place of Residence Income}}}$$

WORK/RESIDENCE RATIO 1969-2008

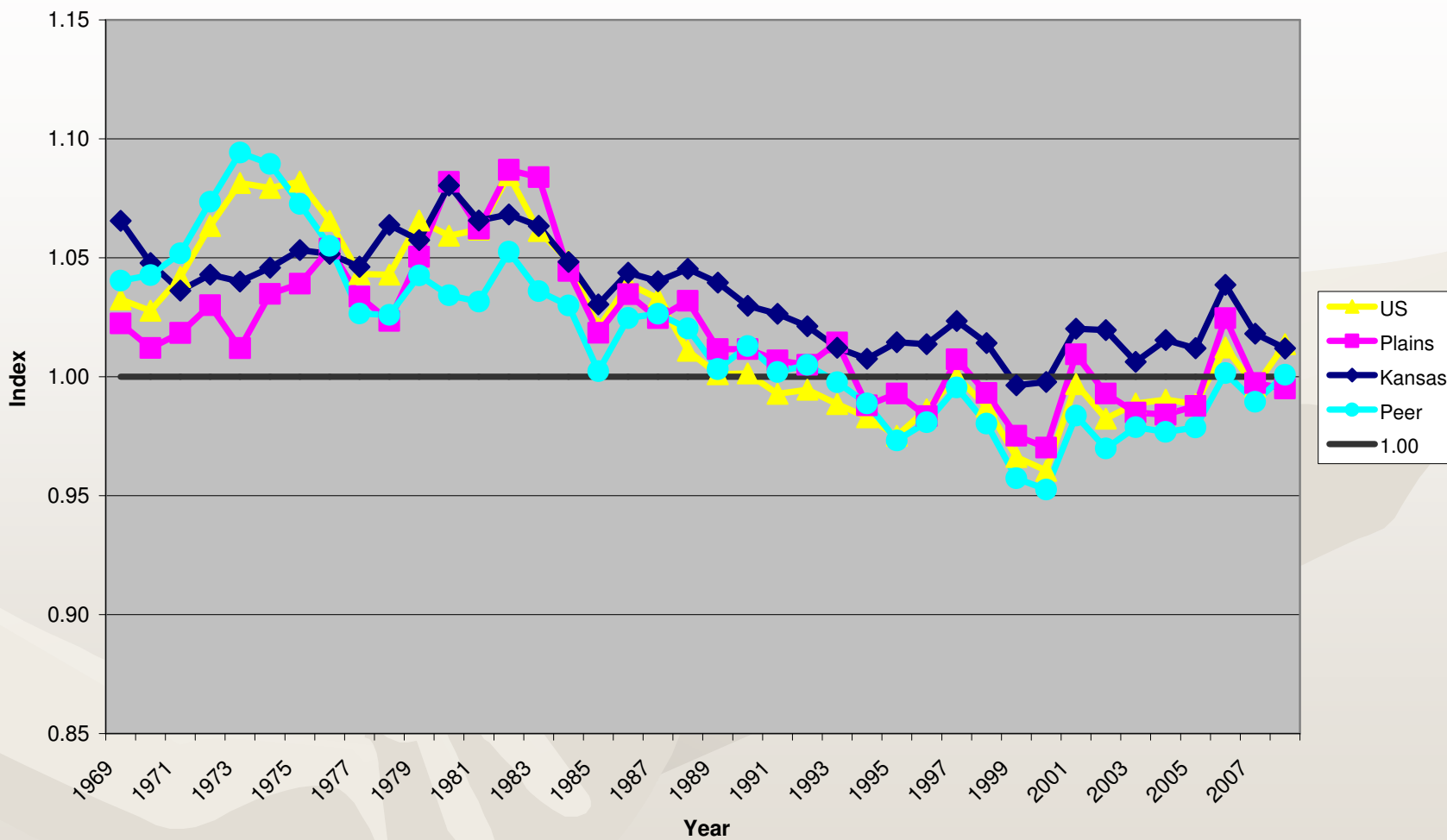


Composite Strength Index

Composite Strength Index = f (Other Indices)

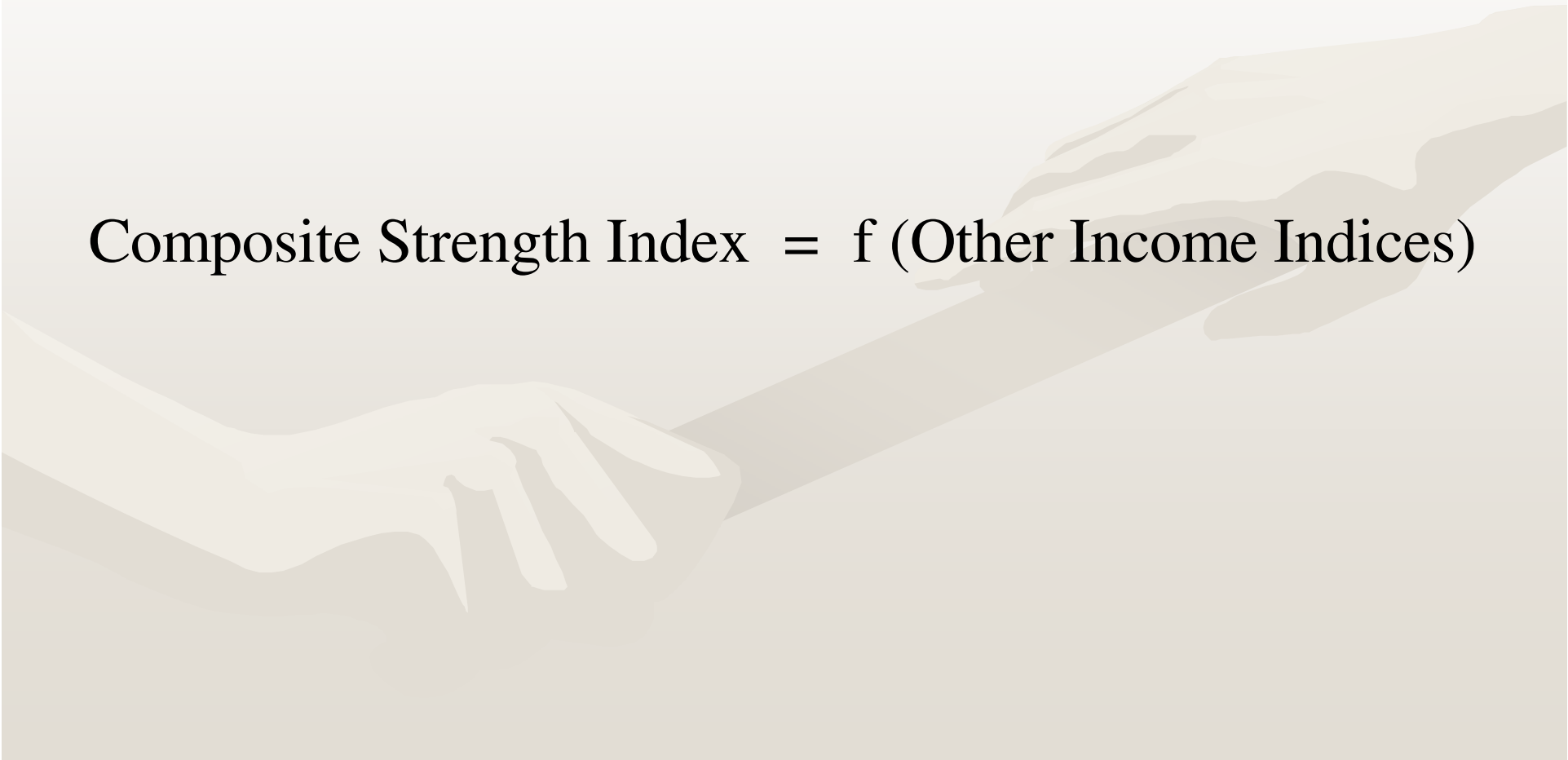
A faint, stylized illustration of two hands shaking, symbolizing agreement or partnership, serves as the background for the lower half of the slide. The hands are rendered in a light beige color with soft shadows, set against a light beige gradient background.

COMPOSITE INDEX 1969-2008

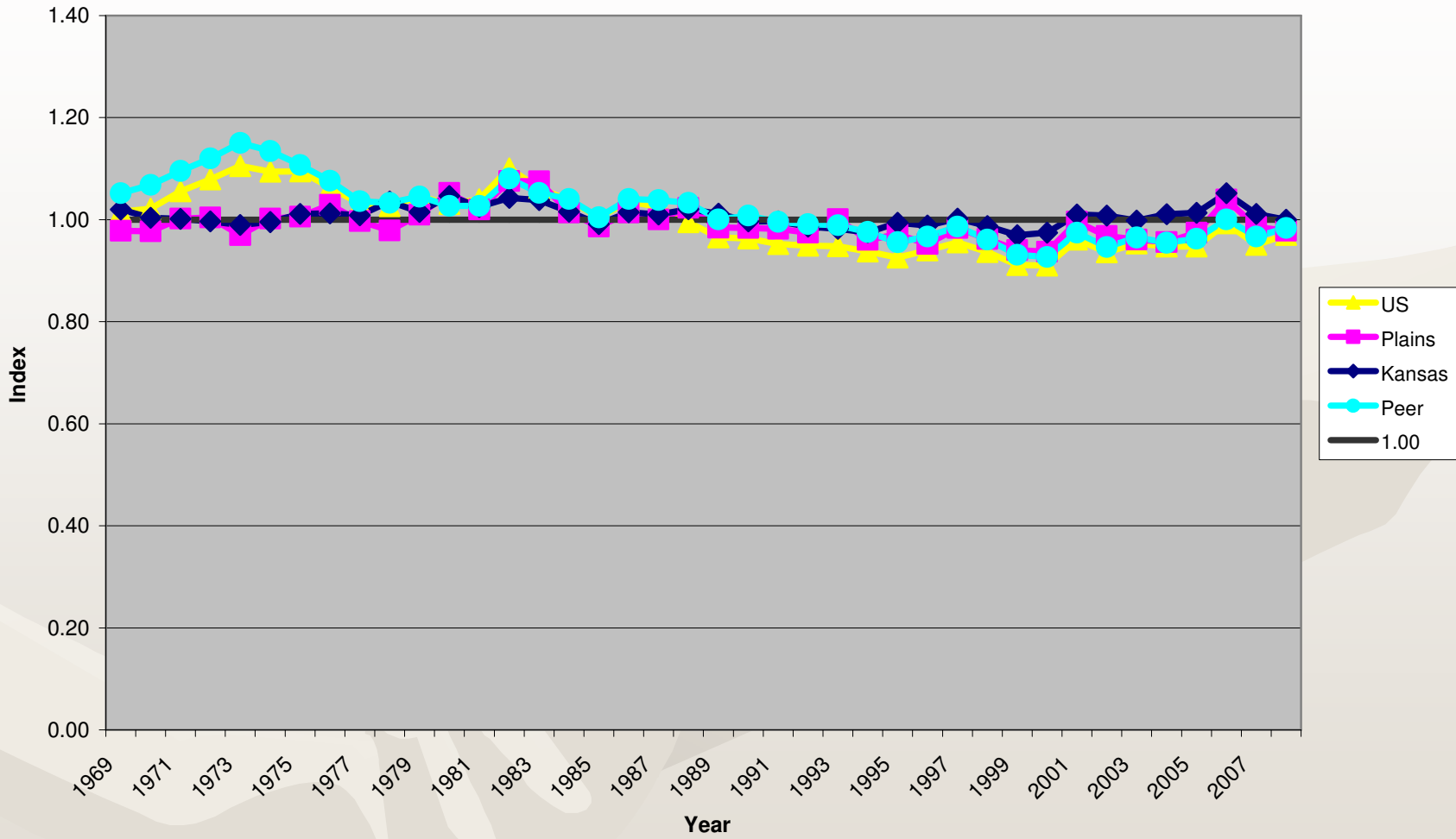


Core Composite Strength Index

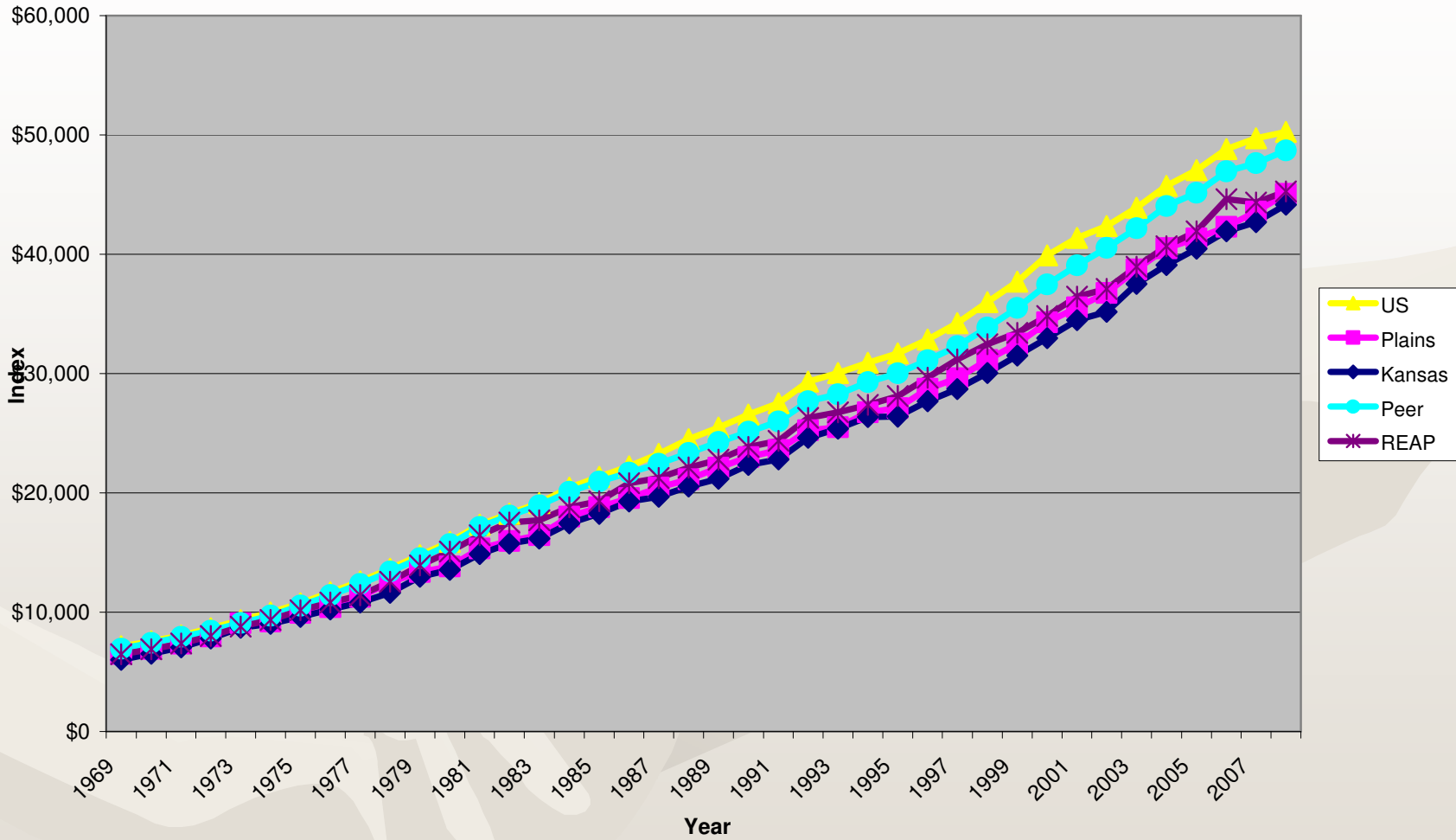
Composite Strength Index = f (Other Income Indices)

A faint, stylized illustration of two hands shaking, symbolizing agreement or partnership, serves as the background for the lower half of the slide. The hands are rendered in a light beige color with soft shadows, set against a light beige gradient background.

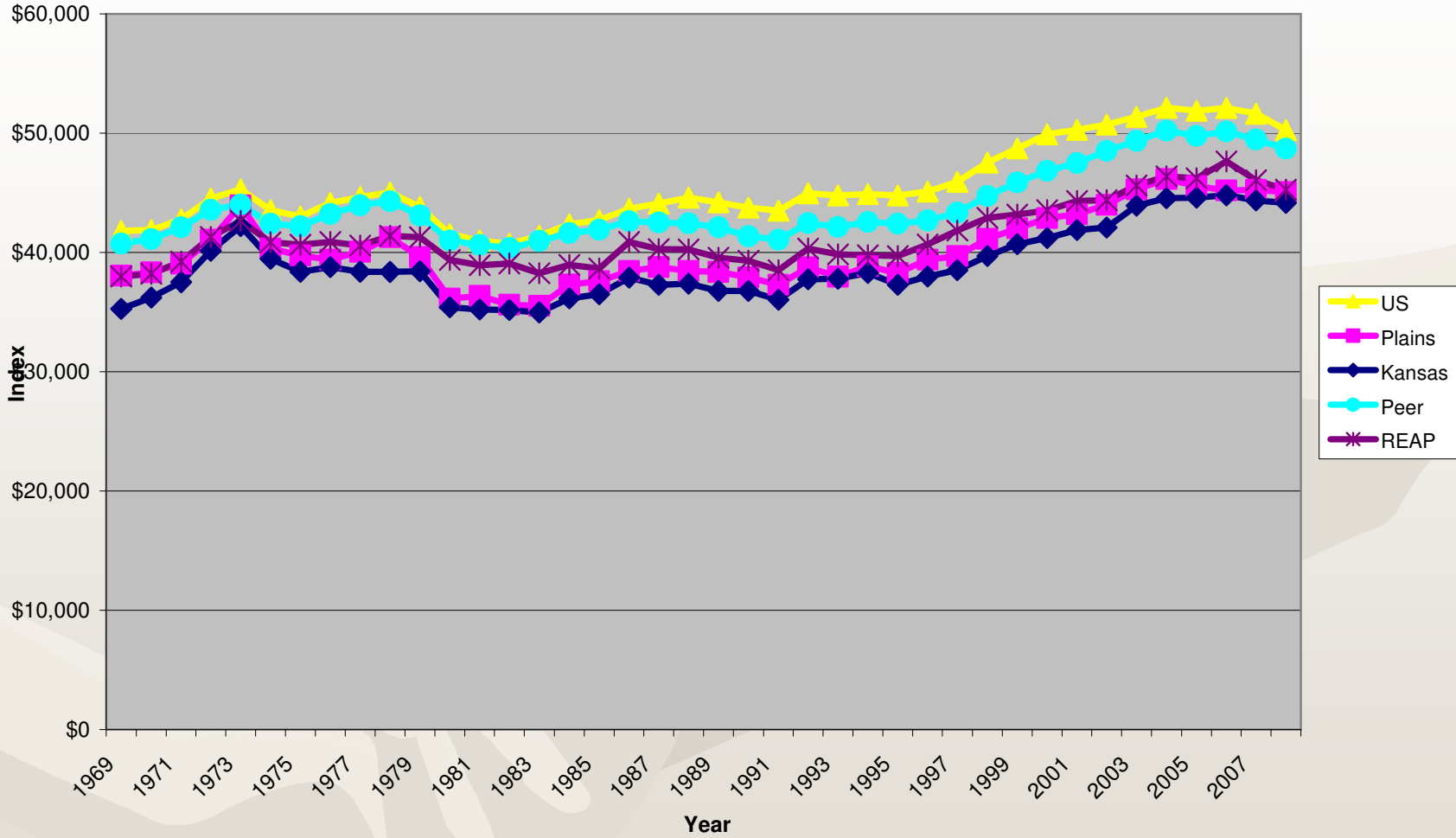
CORE COMPOSITE INDEX 1969-2008



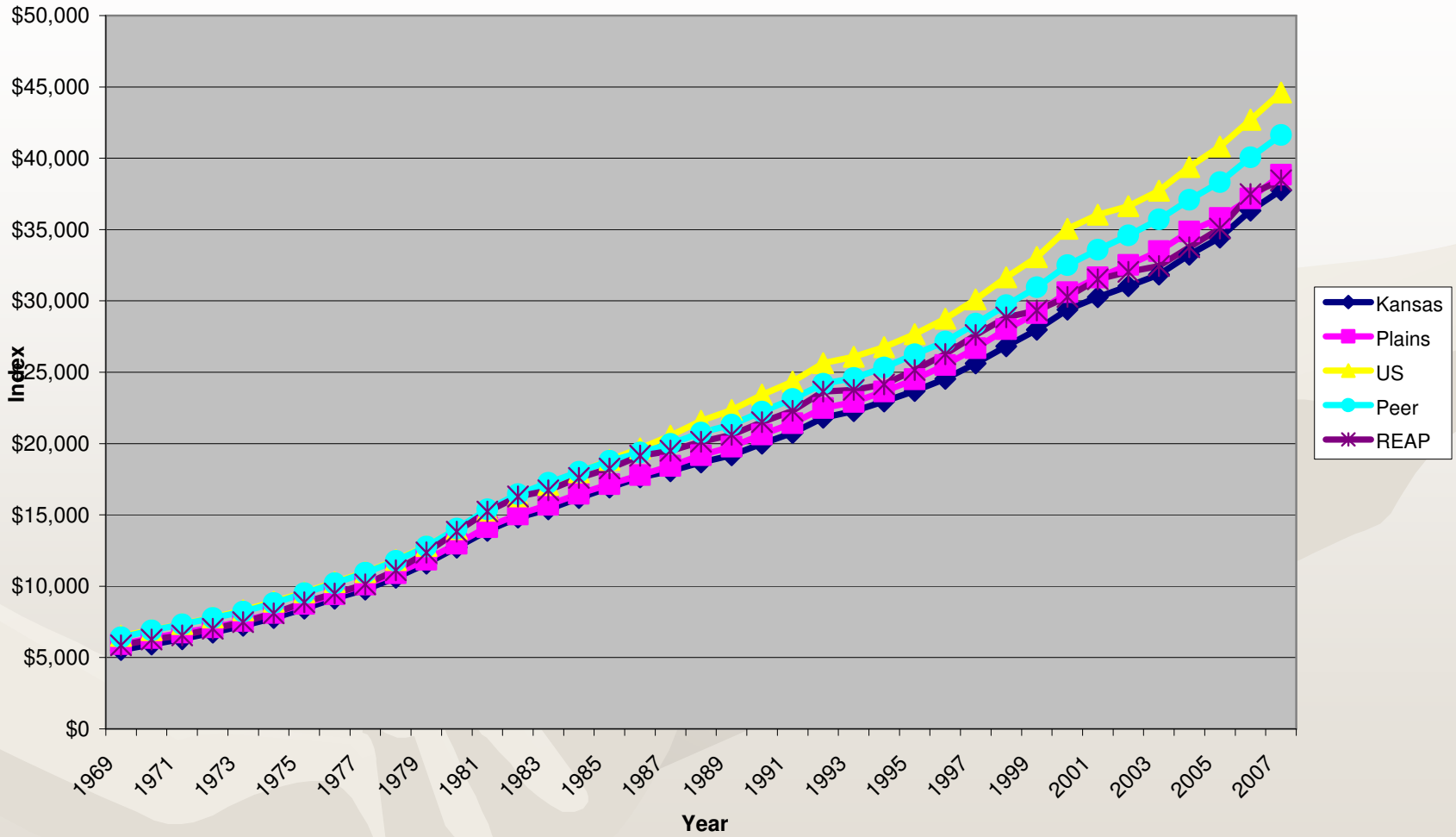
AVERAGE EARNINGS PER JOB 1969-2008



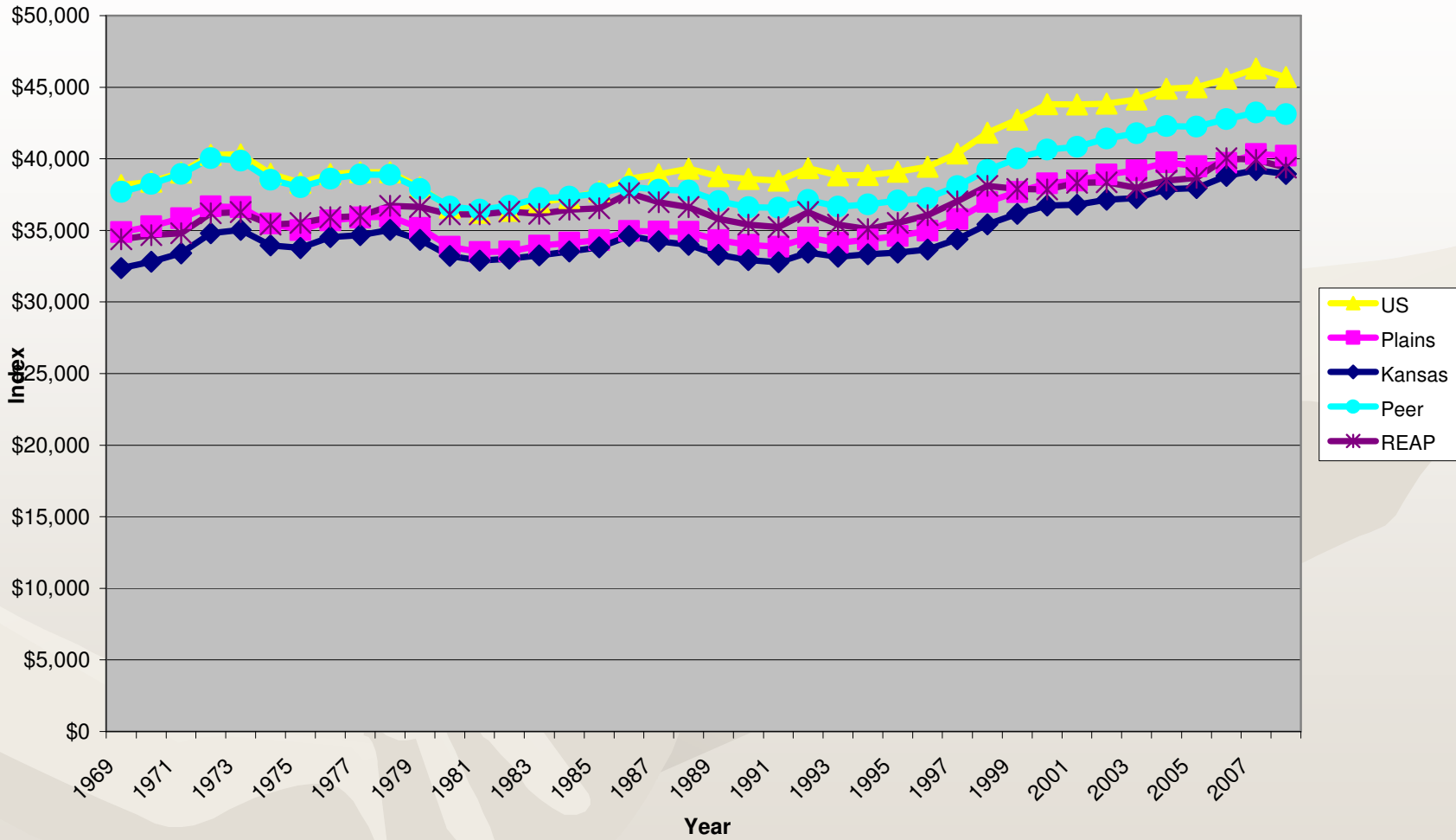
REAL AVERAGE EARNINGS PER JOB
1969-2008
2008=100



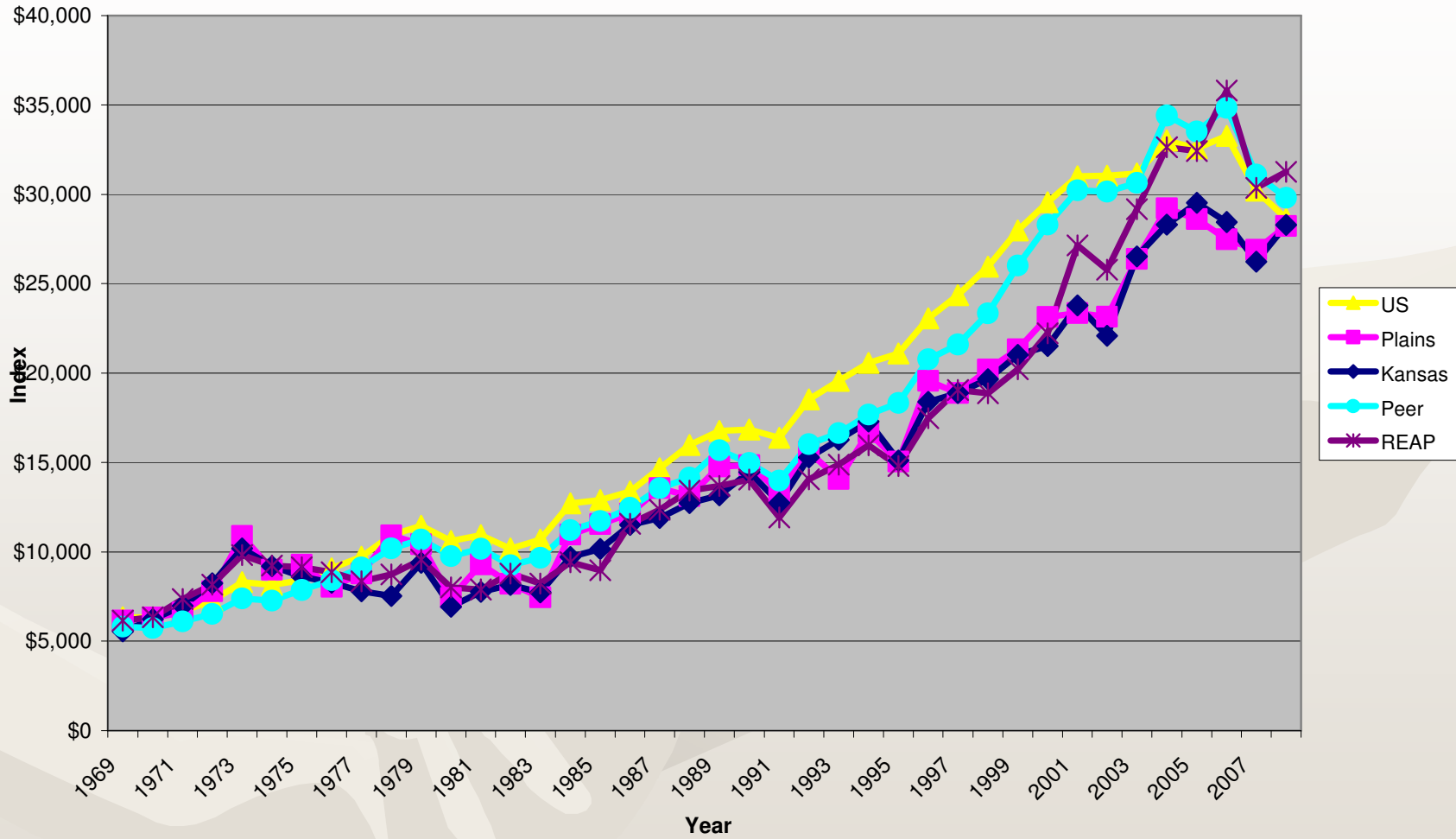
AVERAGE WAGES & SALARIES PER JOB 1969-2008



REAL AVERAGE WAGES & SALARIES PER JOB
1969-2008
2008=100



AVERAGE PROPRIETORS INCOME 1969-2008



REAL AVERAGE PROPRIETORS INCOME
1969-2008
2008=100

