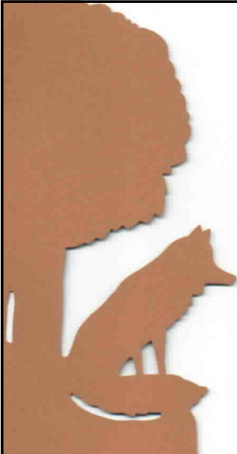


**Advanced Education
In General Dentistry**


WSU College of Health Professions
AEGD Kansas
A Center of Dental Excellence



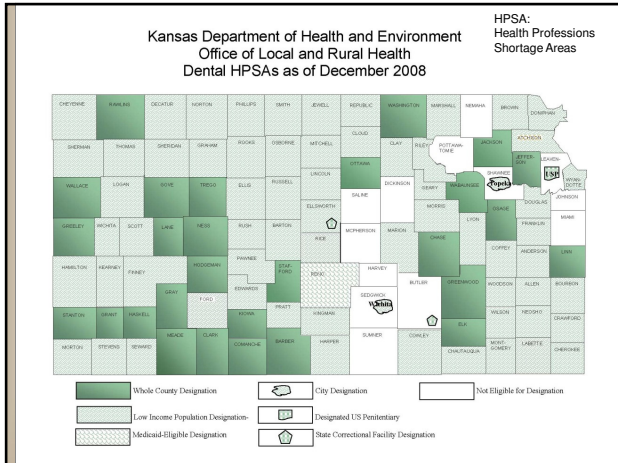
Charles R. Fox, OD, PhD, FAAO
Associate Dean
Academic Affairs & Research
AEGD Assistant Dir, Operations
College of Health Professions
Wichita State University
316-978-3600
charles.fox@wichita.edu

Oral Health needs in Kansas?


- 36% below national target for Dentists
 - Target: 1 dentist per 2,000 persons
 - Kansas 2010: 1 per 2,725
 - Kansas 2045: 1 per 3,400 (70% below Target)
- 96 of 105 Kansas counties are designated shortage areas for dentistry in whole or part. 14 counties have no dentist at all.
- Feds say Kansas needs 100 dentists, distributed strategically, especially in rural areas.



No Dental Education in Kansas.




Program Value?



- **A community resource.**
 - Residents provide basic & enhanced dental care for the community
 - especially to the underserved.
 - Initially Wichita, then spread throughout the state
 - This is a national model for excellence
- Training more dentists in Kansas **increases access to dental care** across the state.
- Because oral health directly relates to general health, **quality of life** will improve.

What is the AEGD program

- 1 year, post-doctoral education
 - Patient Care experience beyond that received in dental school
 - Comprehensive Care: pediatrics, orthodontics, oral surgery, etc
- First ever dental education program in Kansas
- Initially(fall 2009): 7 residents; GraceMed main clinic
- New Facility: expand to 2 yr program; 10 residents
 - 1st year in Wichita
 - New Facility
 - GraceMed
 - VAMC
 - Sedgwick County
 - Others
- 2nd year throughout KS



Inaugural AEGD class, fall 2009



A Dental School for Kansas?



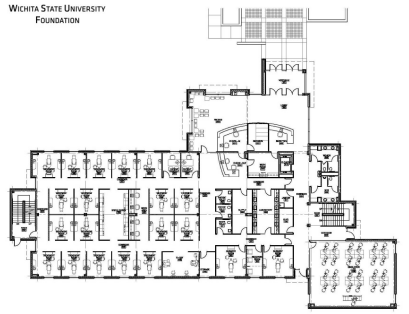
“We should analyze the possibility of developing a dental school at Wichita State.”

-- Gov. Mark Parkinson
Kansas Board of Regents', August 2009

- AEGD is not a dental school BUT it does provide appropriate dental education for the state.
- WSU is open to this possibility if the state can support it.
- The new clinical facility would be the appropriate place for such a program.
 - Dental School = clinical facility + classrooms

What is this new facility? – 1st floor

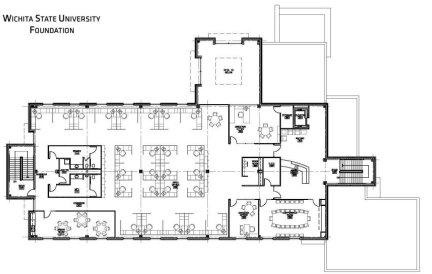
WICHITA STATE UNIVERSITY
FOUNDATION



- Delta Dental of Kansas AEGD Clinic
- 18 treatment rooms
- Digital X-ray
- Laboratory
- Surgery and recovery rooms
- Reception area
- Waiting area
- Simulation Lab

What is this new facility? - 2nd floor

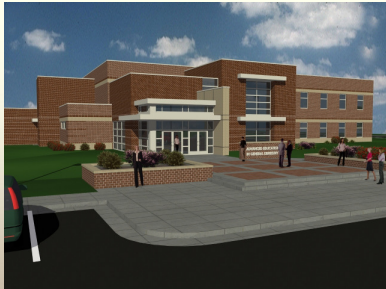
WICHITA STATE UNIVERSITY
FOUNDATION



- Conference Room
- Offices
- Waiting area
- Business office
- Locker rooms
- Break room
- Consultation rooms

WHAT are the New Facility needs?

- Located south of Metroplex
- 12,500 square feet
- #1 capital priority at WSU
- \$5 million to build
- \$1.4 million to equip
- Value of WSU land: \$200K



View from North

Want to know more?

- www.wichita.edu/aegd
- www.wichita.edu/givetoaegd