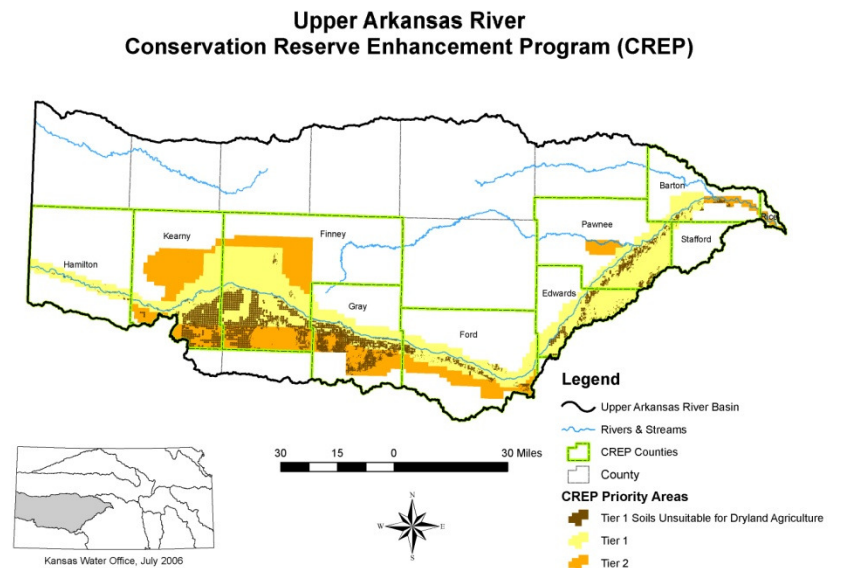


Partnerships

Conservation Reserve Enhancement Program (CREP)

- USDA (FSA & NRCS)
- SCC
- KWO
- GMD #3
- Ark River Damage \$
- Pheasants Forever
- KSU



Partnerships

PWWSD # 23

- 19 individual entities
- Fall River used as source
- Supply backed up by reservoir releases
- USACE/DWR/KWA agreement



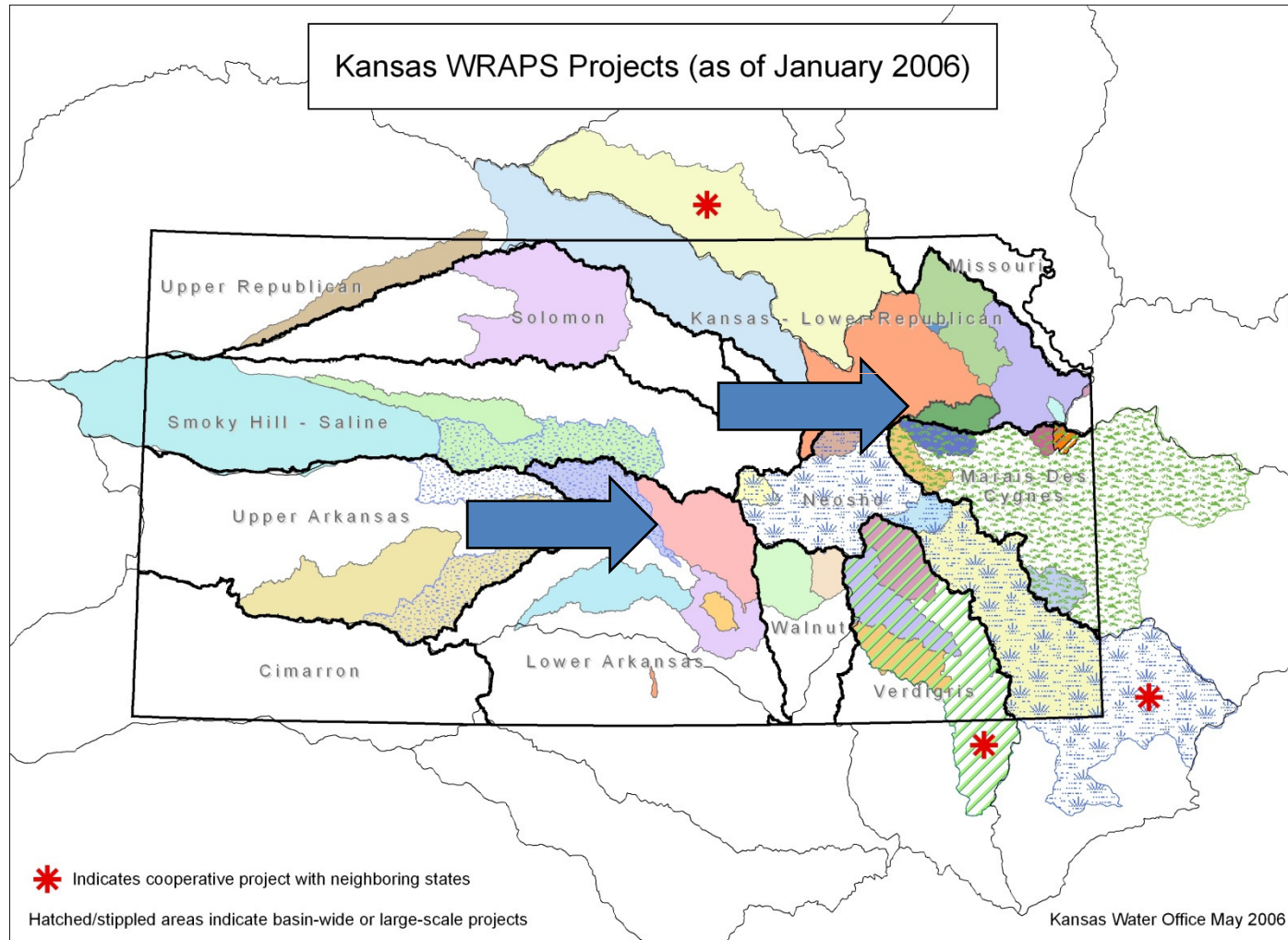
Partnerships

John Redmond Reservoir Sedimentation

- SWPF & Recovery Act \$
- RC & D, Conservation Districts locally
- KWO & SCC
- USACE



Partnerships



Now is not the time to stop.



- The next step is implementation.
 - Implementation may be through legislation, funding, or focus of existing agencies' programs.

State Water Plan Fund
At Work



New revenue proposed for FY2010

- \$14.2 million in increased revenue
 - Increase in SWPF fees - \$4.7 million
 - Dedicate 10% of ELARF to water infrastructure projects and debt reduction - \$9.5 million

Expanded Lottery Act Revenue Fund

- ELARF uses
 - Debt reduction
 - Reservoir storage financing
 - Reservoir Beneficial Use Fund
 - Infrastructure improvement
 - Reservoir sedimentation
 - Other water supply infrastructure
 - Property tax relief



What's the plan for FY 2011, 2012 and beyond?

- KWA to set direction in coming months
- Maintain current funding sources
- Continued efforts for ELARF?
- Revised fee proposal?
- New revenue sources?

Questions or Comments?

Tracy Streeter – Director
Kansas Water Office
Tracy.Streeter@kwo.ks.gov
(785) 296-3185

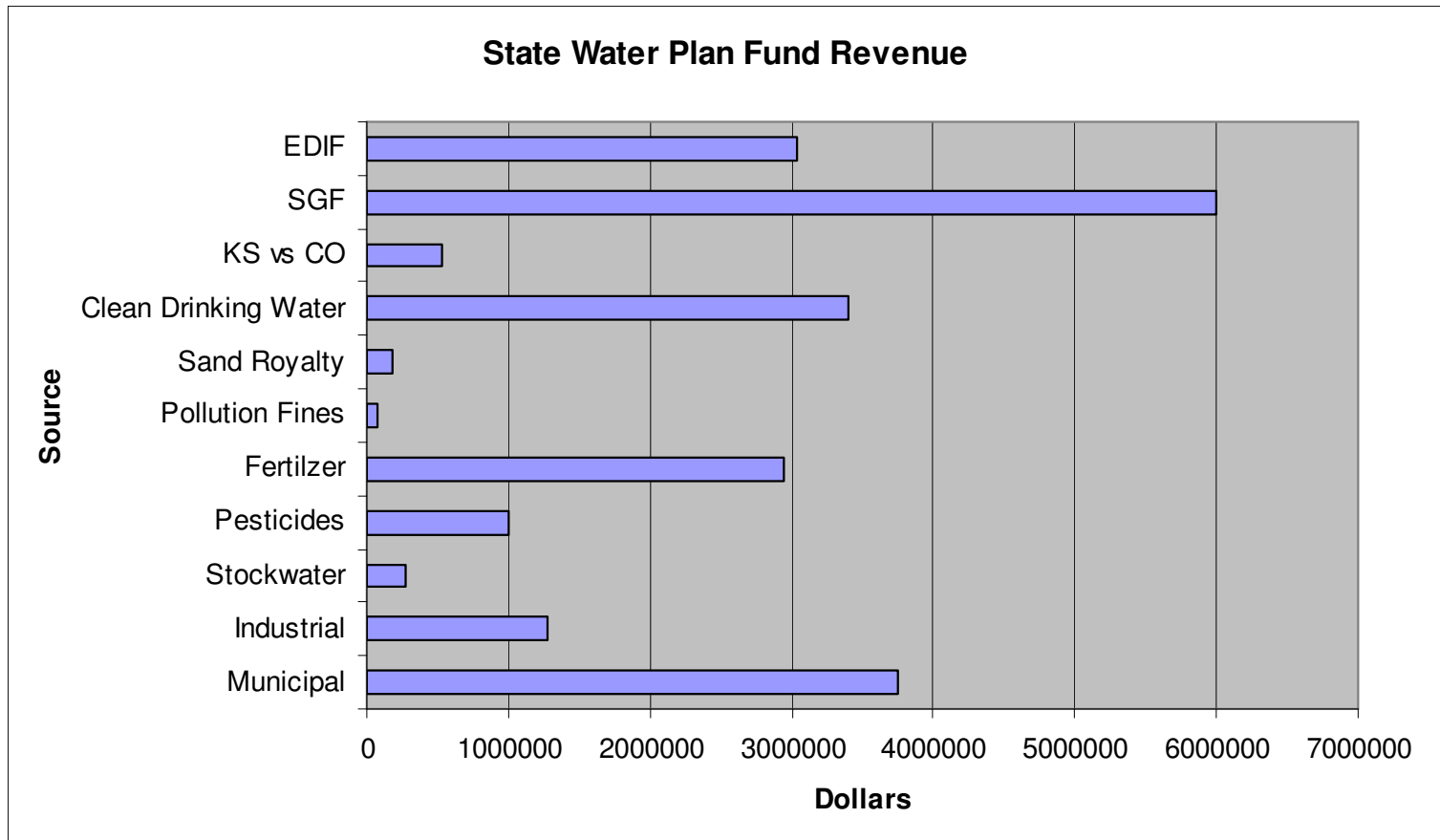


State Water Plan Fund Revenue Sources

- Water Protection Fees
- Fees Imposed on Fertilizer and Pesticides
- Pollution Fines
- Sand Royalty Receipts
- Clean Water Drinking Fee
- State General Fund Transfer
- Economic Development Initiatives Fund (EDIF) Transfer

State Water Plan Fund Revenue

(FY 2009 Estimate)

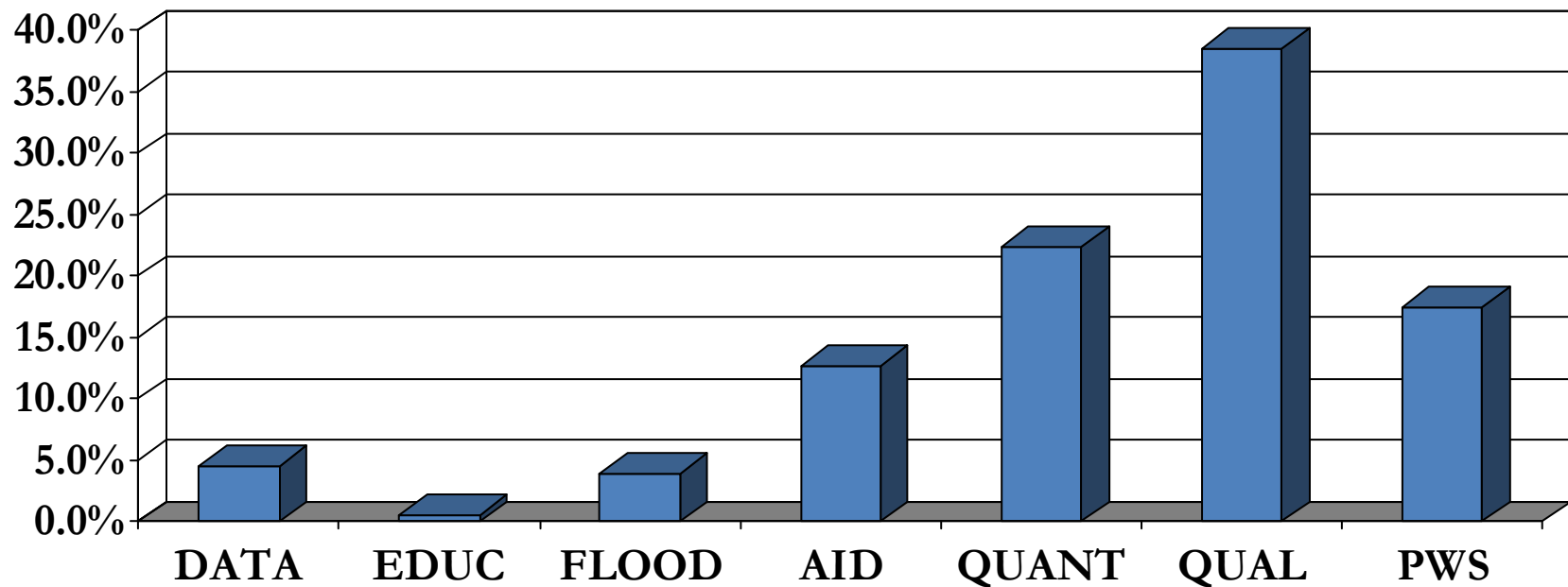


Expenditures from the State Water Plan Fund

- Based on priorities of the State Water Plan
- State Water Plan Budget is developed by the Kansas Water Authority
 - It is then used by state agencies to develop their budgets
- The Governor's budget recommends expenditures for the Fund each January.
- Appropriations from the Fund are made by the Legislature.

What type of programs & projects?

FY 2009

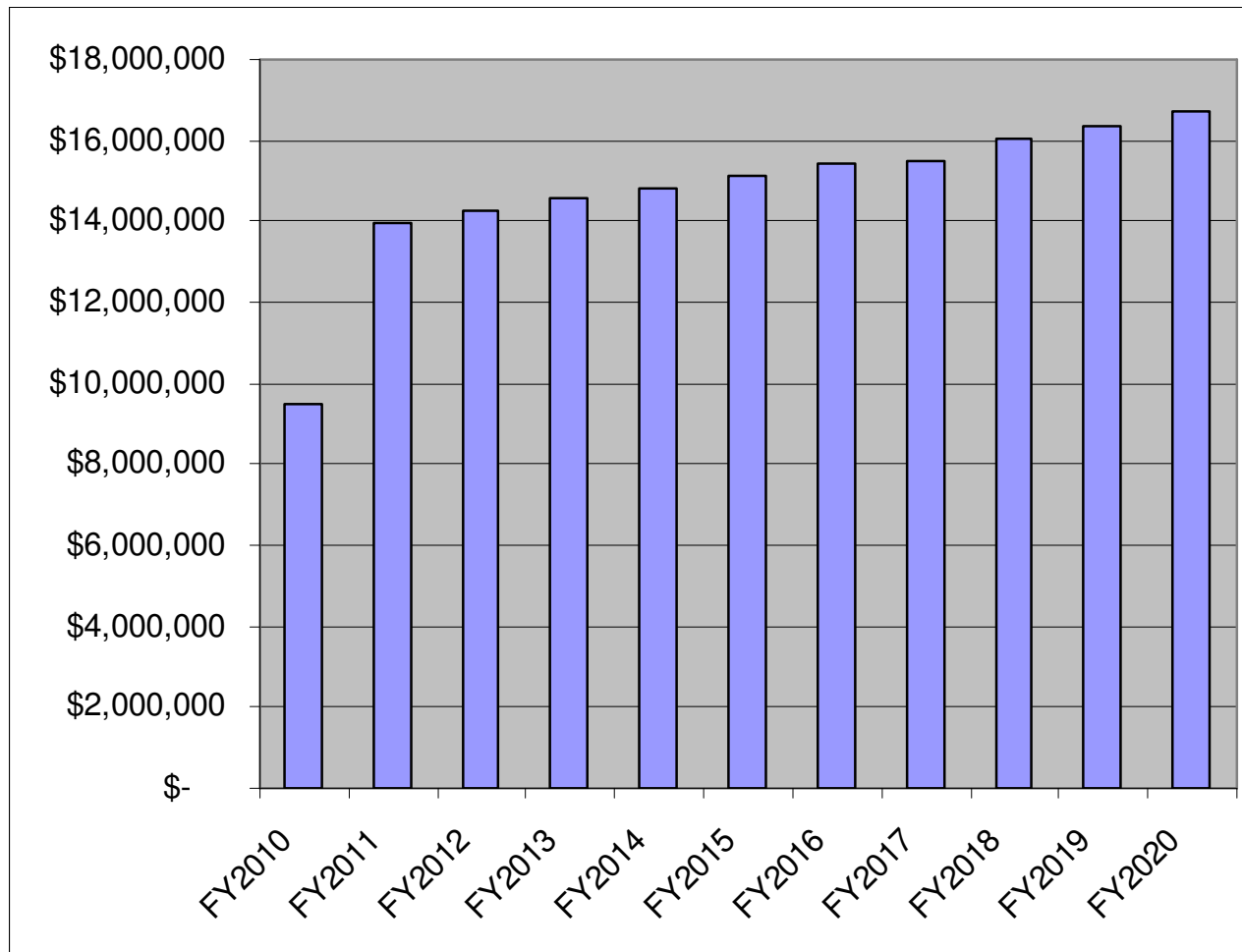


FY 2010 ELARF REQUEST

Based on 2008 Revenue Projections

KDA	DAM REHABILITATION & SAFETY	\$250,000
SCC	STREAMBANK STABILIZATION	\$1,000,000
KWO	PURCHASE OF RESERVOIR STORAGE (Perry & Milford)	\$3,601,000
KWO	JOHN REDMOND LOGJAM & DREDGING	\$3,449,601
KWO	STREAMBANK PLANNING	\$150,000
KDWP	WEBSTER MINIMUM POOL AGREEMENT	\$750,000
KDWP	RIPARIAN EASEMENTS	\$300,000
TOTAL		\$9,500,000

ELARF Projections – 10% to Water Infrastructure and Debt Reduction



Planning for the Future

No one knows what the future holds.

However, management, conservation, and development of the state's water resources, will continue to be critical to Kansas.

Water planning for current and future needs will continue.

